

CHARM ARTIST COLLECTIVE
LAS VEGAS HALTER TOP

Sizes 18-34
 with cup sizes A-H

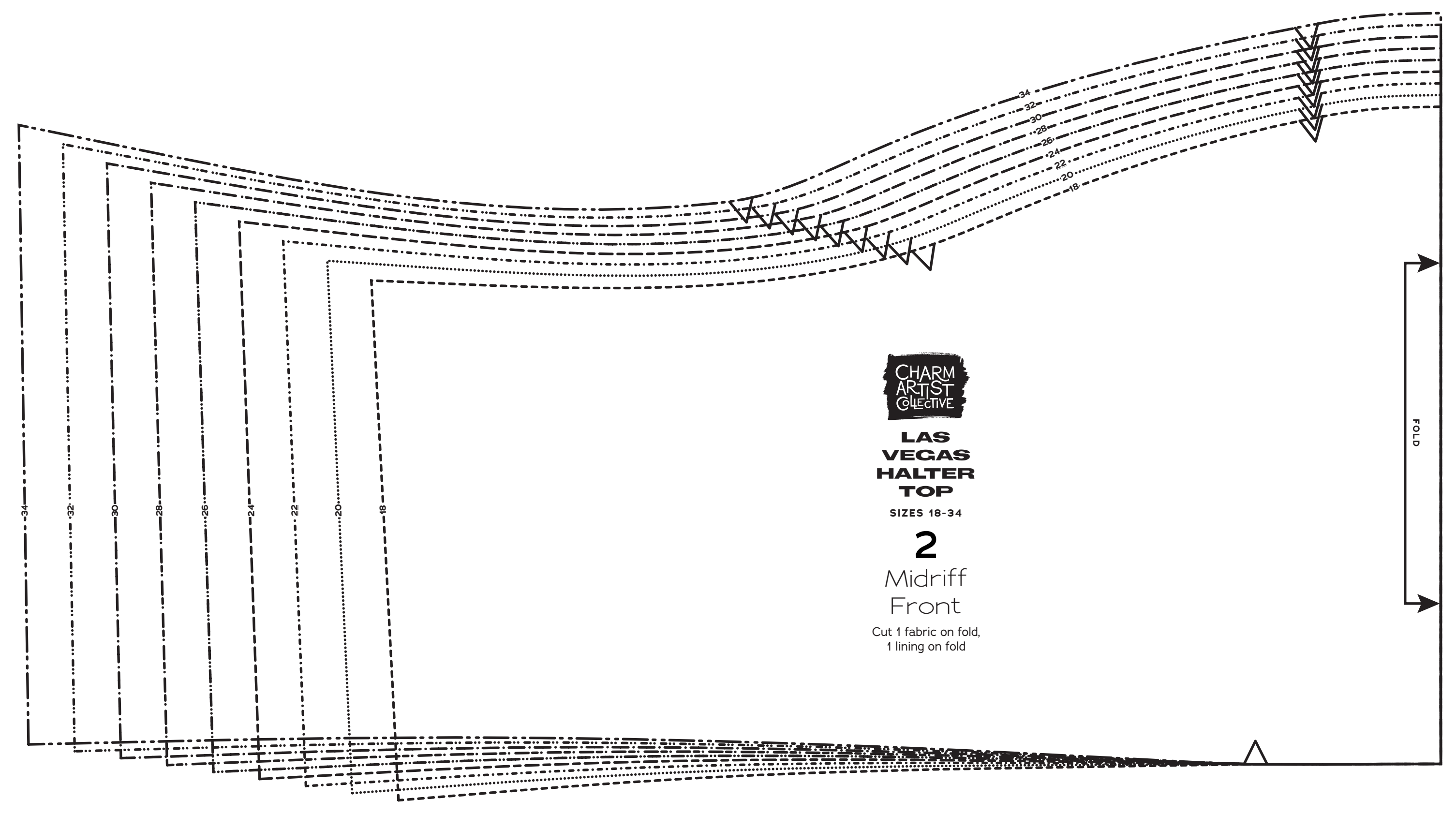
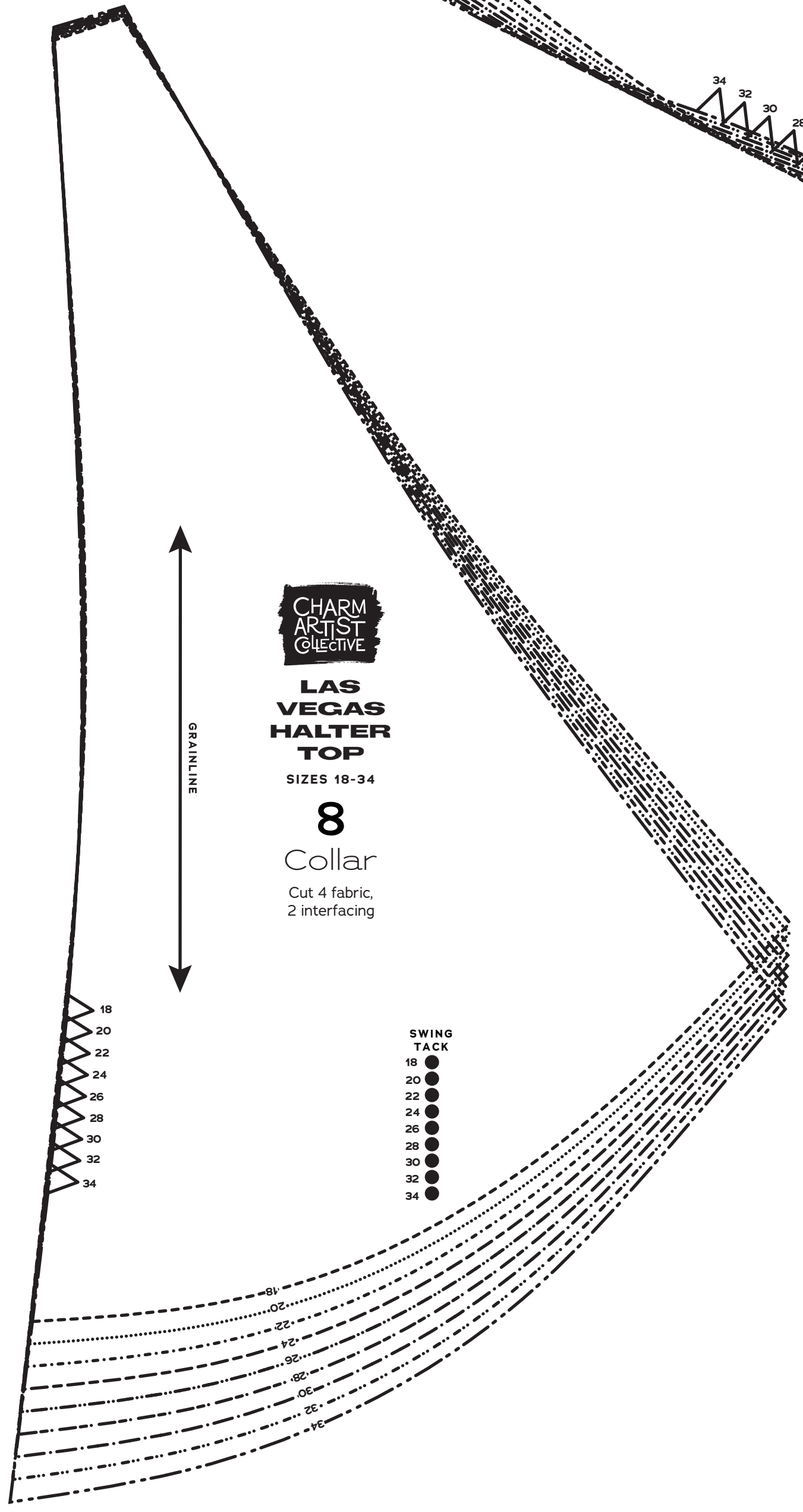
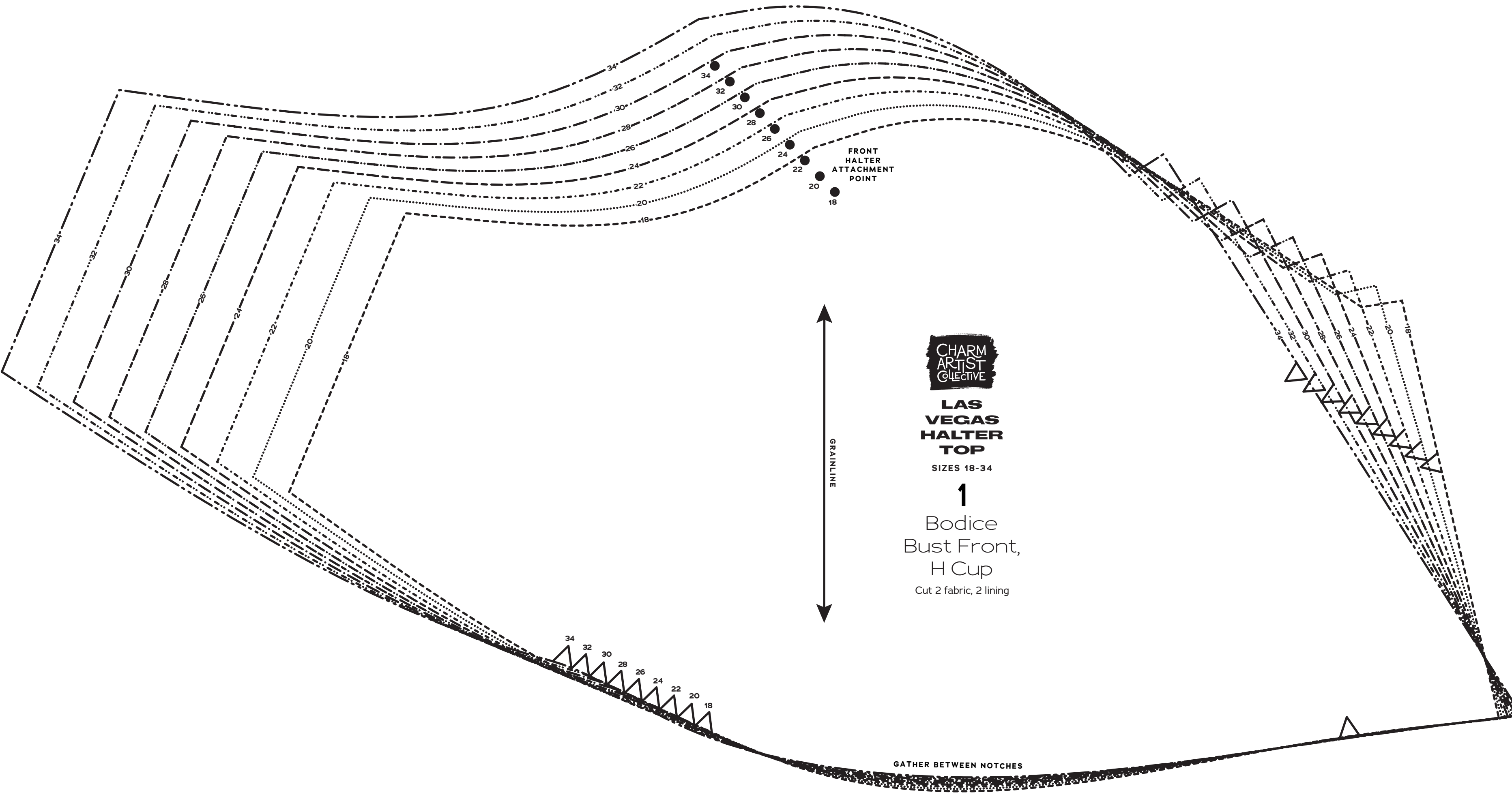
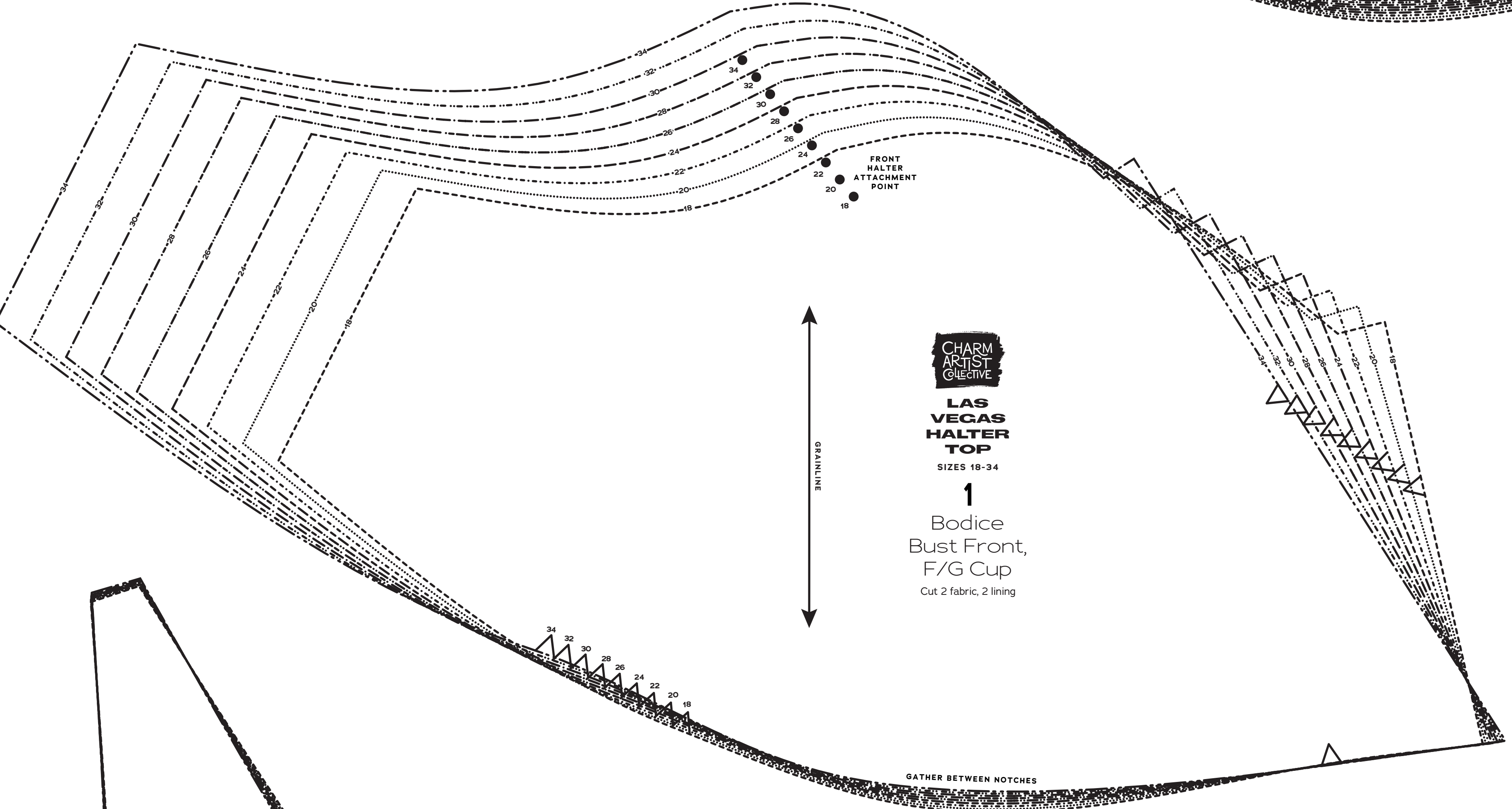
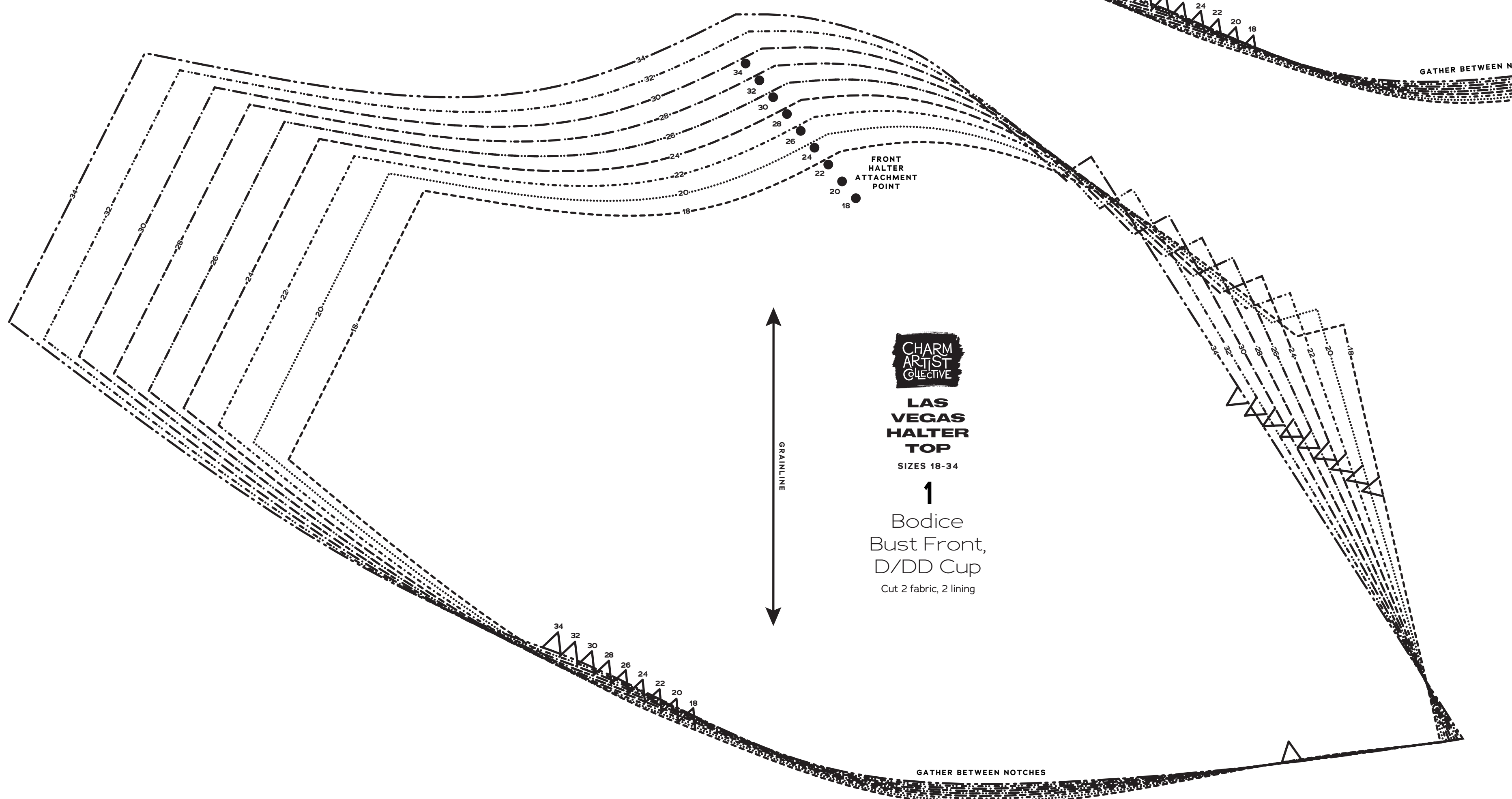
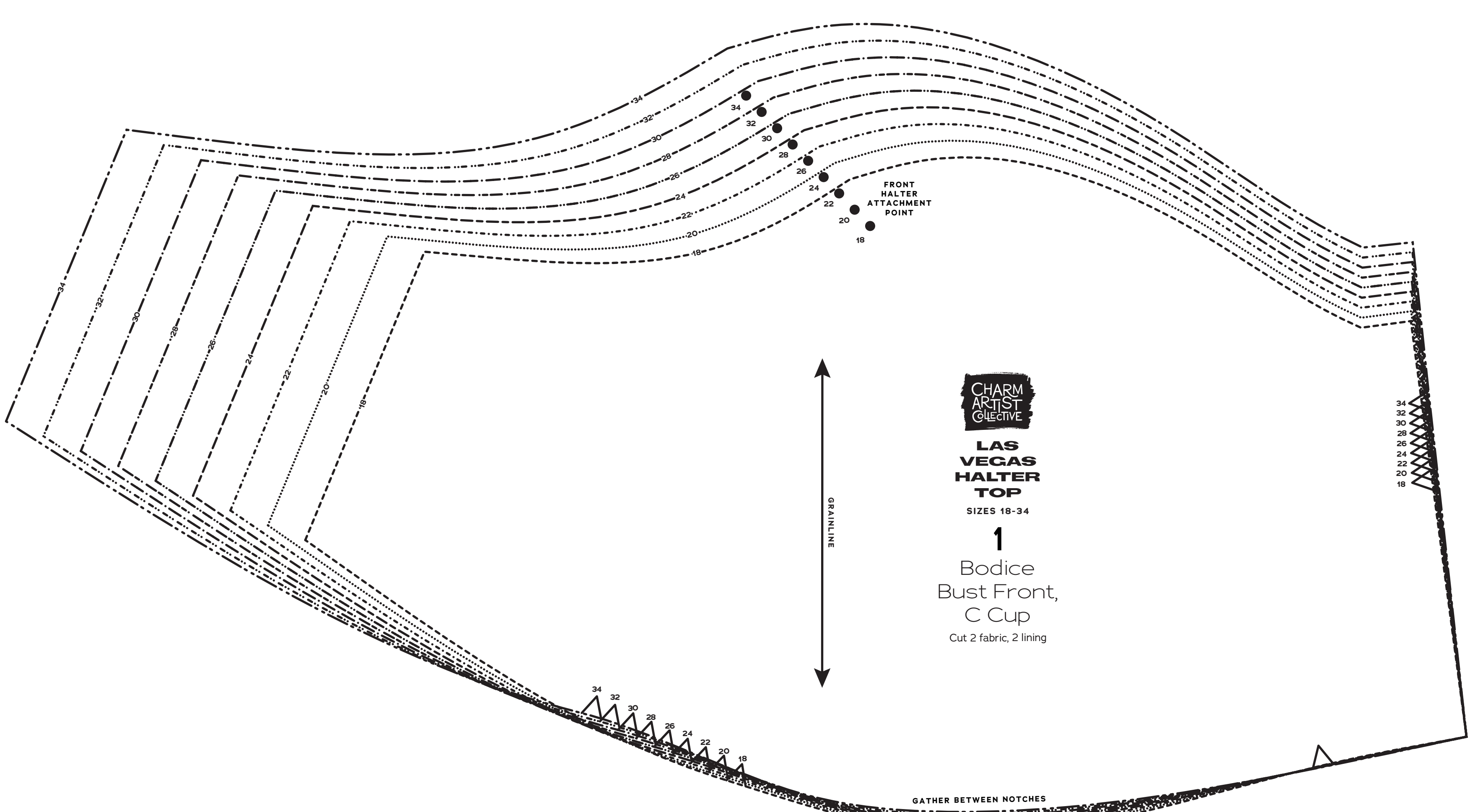
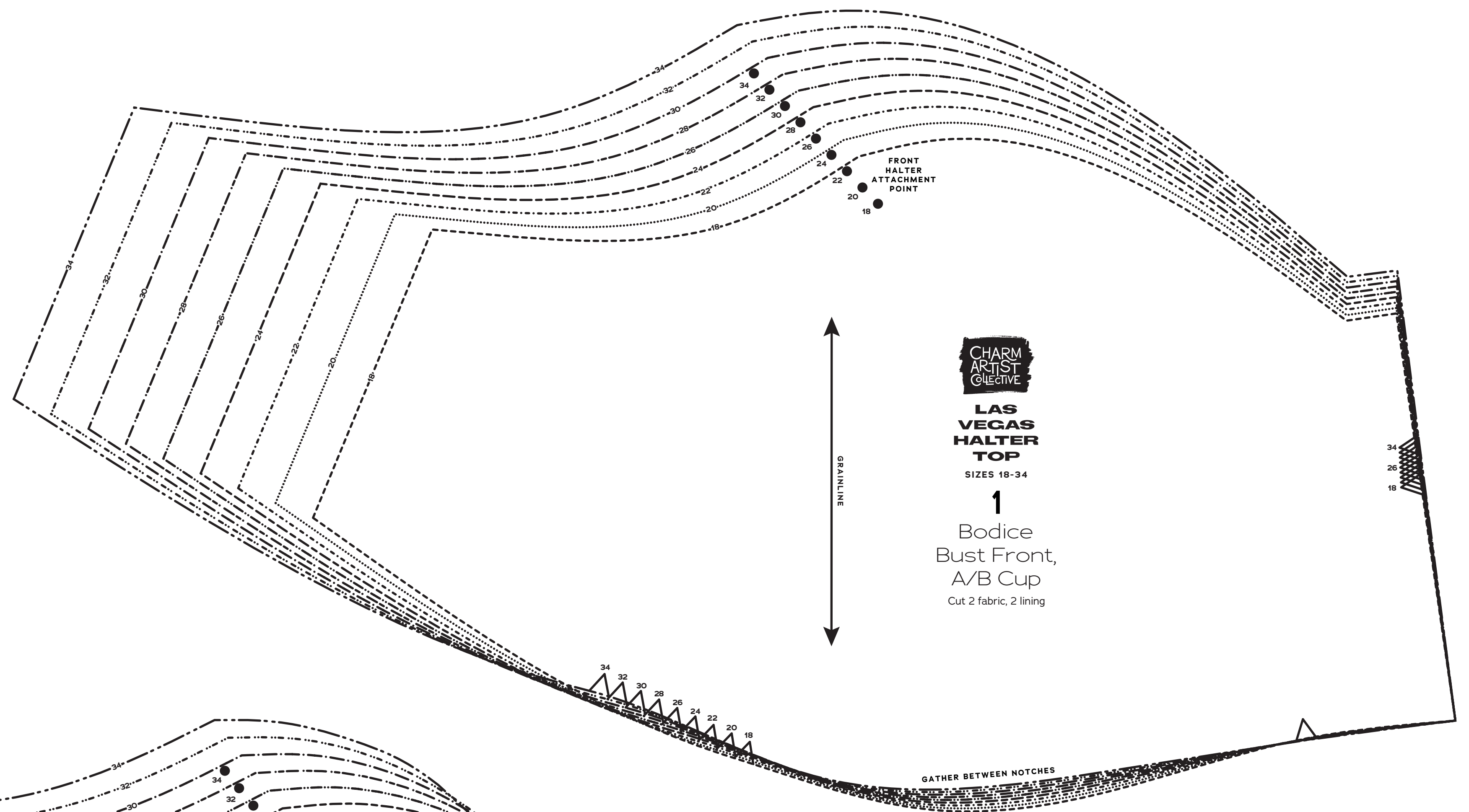
5/8 inch (1.5 cm) seam allowances are included on all pattern pieces.

PAGE 1 OF 2

PATTERN PIECE INDEX

1 Bodice Bust Front, A/B cup	SIZE 18-34	SYMBOL KEY
1 Bodice Bust Front, C cup	PATTERN SIZE KEY	
1 Bodice Bust Front, D/DD cup	18	grainline arrow
1 Bodice Bust Front, F/G cup	20	match point/ placement mark
1 Bodice Bust Front, H cup	22	
2 Midriff Front	24	
8 Collar	26	
	28	
	30	
	32	
	34	

1" test square



CHARM ARTIST COLLECTIVE
LAS VEGAS HALTER TOP

Sizes 18-34
 with cup sizes A-H

5/8 inch (in) (1.5 cm) seam allowances are included on all pattern pieces.

PAGE 2 OF 2

PATTERN PIECE INDEX

3	Bodice Back	SIZE 18-34	SYMBOL KEY
4	Peplum Front	PATTERN	grainline arrow
5	Peplum Back	SIZE KEY	↔
6	Halter Strap Front	18	match point/ placement mark
7	Halter Strap Back	20	●
		22	1" test square
		24	
		26	
		28	
		30	
		32	
		34	

