

General Information

Location: CAIRO EGY
ICAO/IATA: HECA / CAI
Lat/Long: N30° 06.7', E031° 24.8'
Elevation: 467 ft

Airport Use: Public
Daylight Savings: Not Observed
UTC Conversion: -2:00 = UTC
Magnetic Variation: 4.0° E

Fuel Types: Jet A-1
Repair Types: Major Airframe, Major Engine
Customs: Yes
Airport Type: IFR
Landing Fee: Yes
Control Tower: Yes
Jet Start Unit: No
LLWS Alert: No
Beacon: Yes

Sunrise: 0447 Z
Sunset: 1527 Z

Runway Information

Runway: 05C
Length x Width: 13120 ft x 197 ft
Surface Type: asphalt
TDZ-Elev: 382 ft
Lighting: Edge, ALS, Centerline, TDZ

Runway: 05L
Length x Width: 10830 ft x 197 ft
Surface Type: asphalt
TDZ-Elev: 190 ft
Lighting: Edge, ALS, Centerline

Runway: 05R
Length x Width: 13123 ft x 197 ft
Surface Type: asphalt
TDZ-Elev: 448 ft
Lighting: Edge, ALS, Centerline, TDZ

Runway: 23C
Length x Width: 13120 ft x 197 ft
Surface Type: asphalt
TDZ-Elev: 375 ft
Lighting: Edge, ALS, Centerline, TDZ

Runway: 23L
Length x Width: 13123 ft x 197 ft
Surface Type: asphalt
TDZ-Elev: 467 ft
Lighting: Edge, ALS, Centerline, TDZ

Runway: 23R
Length x Width: 10830 ft x 197 ft
Surface Type: asphalt
TDZ-Elev: 199 ft
Lighting: Edge, ALS, Centerline

Communication Information

ATIS: 122.600
Cairo Tower: 125.875 Secondary
Cairo Tower: 118.100
Cairo Ground: 120.400
Cairo Ground: 121.900
Cairo Ground: 126.375 Secondary
Cairo Preflight Clearance Delivery: 120.100
Cairo Preflight Clearance Delivery: 127.600 Secondary
Cairo Approach: 119.050
Cairo Approach: 119.550 Secondary
Cairo Approach: 119.975 Secondary
Cairo Approach: 120.700 Secondary
Cairo Approach: 124.375 Secondary
Cairo Tma Terminal Control Area: 125.300
Cairo Tma Terminal Control Area: 129.500 Secondary
Cairo Tma Terminal Control Area: 129.700 Secondary
Cairo Tma Terminal Control Area: 130.500

HECA/CAI CAIRO INTL



5 JUL 13 (10-1R)

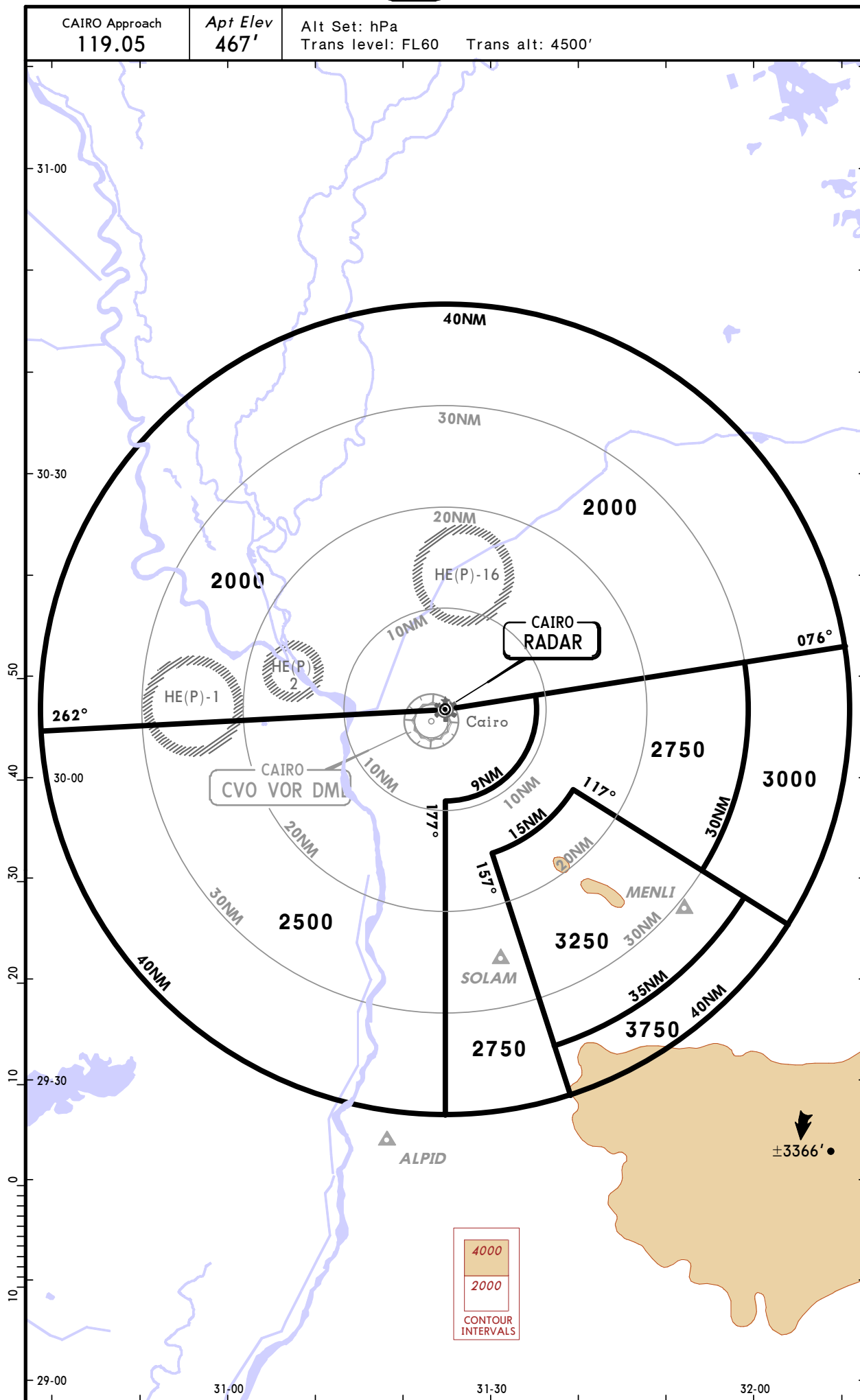
CAIRO, EGYPT

RADAR MINIMUM ALTITUDES

CAIRO Approach
119.05

Apt Elev
467'

Alt Set: hPa
Trans level: FL60 Trans alt: 4500'

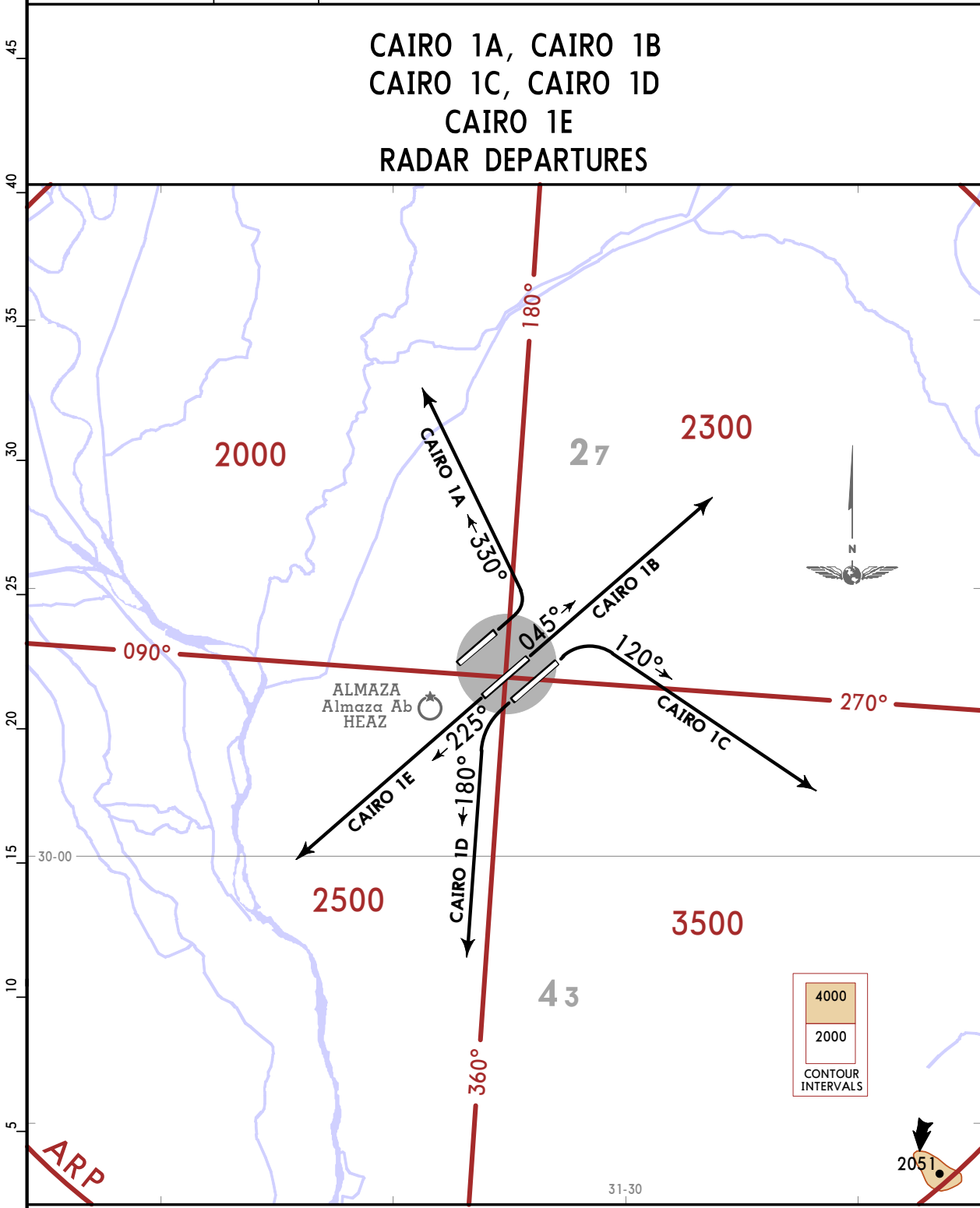


HECA/CAI
CAIRO INTL

JEPPESSEN
19 APR 19 **10-3** Eff 25 Apr

CAIRO, EGYPT
RADAR DEPARTURE

CAIRO Approach 119.050	Apt Elev 467	Trans alt: 4500 1. Contact CAIRO Approach after take-off. 2. In case of use RWY 23R for departure follow ATC.
----------------------------------	------------------------	---



These SIDs require a minimum climb gradient of	CAIRO 1A: 334 per NM (5.5%) until 700.	Gnd speed-KT	75	100	150	200	250	300
	CAIRO 1B, 1E: 334 per NM (5.5%) until 900.	334' per NM	418	557	835	1114	1392	1671
	CAIRO 1C, 1D: 334 per NM (5.5%) until 1000.							

Initial climb clearance 3500 or as directed by ATC

SID	RWY	ROUTING
CAIRO 1A	05L, 05C, 05R	Climb on 330° track, EXPECT RADAR vectors climbing through 3500.
CAIRO 1B		Climb on 045° track, EXPECT RADAR vectors climbing through 3500.
CAIRO 1C		Climb on 120° track, EXPECT RADAR vectors climbing through 3500.
CAIRO 1D	23L, 23C	Climb on 180° track, EXPECT RADAR vectors climbing through 3500.
CAIRO 1E		Climb on 225° track, EXPECT RADAR vectors climbing through 3500.

CHANGES: New procedures at this airport.

© JEPPESSEN, 2019. ALL RIGHTS RESERVED.

NOISE ABATEMENT

GENERAL

Flights within Cairo TMA shall not be flown below FL90 outside a circle of 25NM centered on CVO VOR DME.

The following noise abatement procedures shall apply for FAN JET ACFT.

RUNWAY USAGE

RWY 05L will be used for departures only.

RWY 23R will be used for arrivals and departures.

RWYs 05C/23C will be used for arrivals and departures.

RWYs 05R/23L will be used for arrivals and departures.

ARRIVALS

LOW-POWER/LOW-DRAG APPROACH

ACFT should maintain 250 KT IAS + 10 KT below FL100. Speed should be reduced continuously so as to reach 170 KT IAS + 10 KT IAS shortly prior to 5NM from RWY THR, except when ceiling is below 500' and/or ground visibility is less than 2km. Pilots unable to comply should advise ATC.

DEPARTURES

NADP 1 shall be applied for all take-offs in accordance with ICAO DOC 8168 VOL 1, appendix to chapter 3.

REVERSE THRUST

Idle reverse thrust is recommended during landing.

RUN-UP TESTS

Run-ups will be done on RWY before take-off.

HECA/CAI

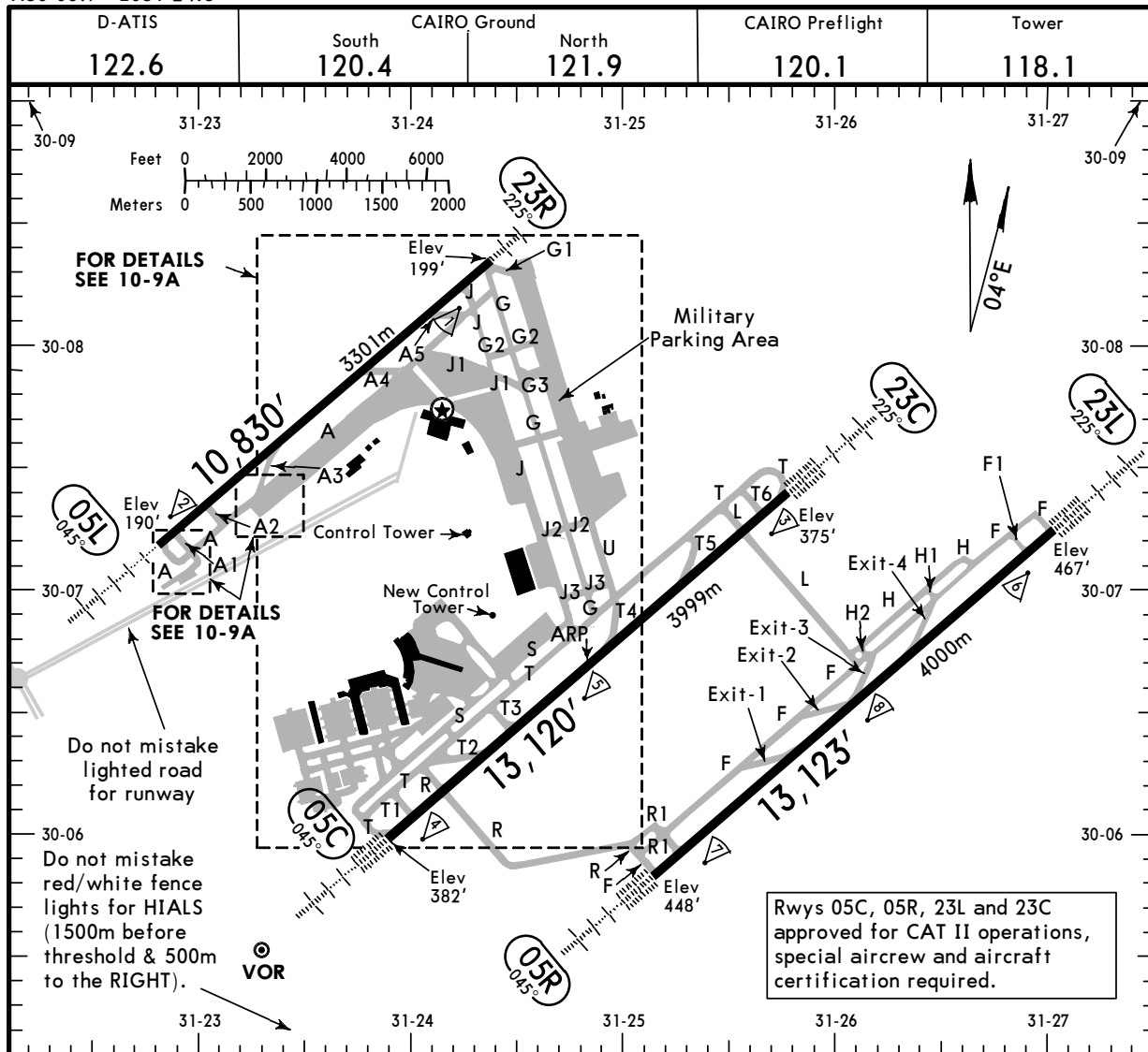
Apt Elev **467'**
N30 06.7 E031 24.8



15 NOV 19 **(10-9)**

CAIRO, EGYPT

CAIRO INTL



ADDITIONAL RUNWAY INFORMATION							
RWY				USABLE LENGTHS			
				LANDING BEYOND		TAKE-OFF	WIDTH
			Threshold	Glide Slope			
05L 23R	HIRL (60m)	CL (30m)	HIALS PAPI(3.0°)	RVR	9554' 2912m		197' 60m
05C 23C	HIRL (60m)	CL (30m)	HIALS-II TDZ PAPI(3.0°)	RVR	12,269' 3740m 12,087' 3684m		197' 60m
05R 23L	HIRL (60m)	CL (30m)	HIALS-II TDZ PAPI(3.0°)	RVR	12,029' 3666m 11,969' 3648m		197' 60m

TAKE-OFF							
AIR CARRIER (JAA) All Rwys				AIR CARRIER (FAR 121)			
LVP must be in force				Rwy 05C, 23C	Rwy 05L, 23R	All Rwys	
RL & CL		RCLM (DAY only) or RL	RCLM (DAY only) or RL	CL & RCLM any RVR out, other two req.	CL & RCLM two RVR operating	Adequate Vis Ref	
A				2 Eng	TDZ RVR 200m Mid RVR 200m Roll out RVR 150m	TDZ RVR 200m Roll out RVR 150m	RVR 500m VIS 400m
B	200m (150m)	250m	400m	3 & 4 Eng			
C							
D	250m (200m)	300m					

RVR in parentheses if TDZ RVR is supplemented by Mid and/or Rollout RVR.

HECA/CAI

JEPPESEN
6 SEP 19 **10-9B** Eff 12 Sep

CAIRO, EGYPT

CAIRO INTL

INS COORDINATES							
STAND No.	COORDINATES		ELEV	STAND No.	COORDINATES		ELEV
1	N30 07.5	E031 23.5	208	316	N30 06.2	E031 23.7	382
2, 3	N30 07.5	E031 23.6	208	317	N30 06.3	E031 23.7	381
4	N30 07.6	E031 23.6	207	318	N30 06.3	E031 23.7	379
5 thru 7	N30 07.6	E031 23.7	205	319	N30 06.2	E031 23.7	380
8, 9	N30 07.6	E031 23.7	206	320	N30 06.2	E031 23.7	381
10	N30 07.7	E031 23.8	211	321	N30 06.2	E031 23.6	378
11	N30 07.7	E031 23.9	210	322	N30 06.2	E031 23.6	377
12	N30 07.8	E031 23.9	211	323	N30 06.2	E031 23.6	376
13	N30 07.8	E031 23.9	212	324	N30 06.2	E031 23.5	375
14	N30 07.8	E031 24.0	212	325	N30 06.2	E031 23.5	376
15	N30 07.8	E031 24.1	224	326	N30 06.1	E031 23.5	378
16	N30 07.8	E031 24.1	220	327	N30 06.1	E031 23.6	380
17	N30 07.8	E031 24.0	217	328	N30 06.1	E031 23.6	382
18	N30 07.9	E031 24.0	213	329	N30 06.1	E031 23.6	383
19	N30 07.9	E031 24.1	215	330	N30 06.1	E031 24.1	383
20	N30 07.9	E031 24.1	218	331	N30 06.4	E031 24.1	384
21	N30 07.9	E031 24.1	222	332, 333	N30 06.4	E031 24.1	383
22	N30 07.8	E031 24.1	225	334	N30 06.5	E031 24.1	384
23	N30 07.8	E031 24.2	231	335	N30 06.5	E031 24.1	386
24	N30 07.8	E031 24.3	234	336	N30 06.5	E031 24.2	387
25	N30 07.8	E031 24.3	236	AA1	N30 07.0	E031 22.9	209
26	N30 07.8	E031 24.4	239	AA2	N30 07.0	E031 22.9	211
27	N30 07.8	E031 24.4	244	AA3, AA4	N30 07.1	E031 23.0	210
28	N30 07.8	E031 24.3	242	C1	N30 07.2	E031 24.6	319
29	N30 07.8	E031 24.3	239	C2	N30 07.1	E031 24.6	320
30	N30 07.8	E031 24.2	236	C3	N30 07.1	E031 24.6	322
31	N30 07.7	E031 24.3	242	C4	N30 07.1	E031 24.6	324
32	N30 07.7	E031 24.3	245	C5	N30 07.0	E031 24.6	325
33	N30 07.7	E031 24.3	248	E1	N30 06.8	E031 24.0	330
34	N30 07.6	E031 24.3	251	E2	N30 06.8	E031 24.0	331
35	N30 07.6	E031 24.3	253	E4, E4	N30 06.7	E031 24.1	334
36	N30 07.6	E031 24.4	255	E5, E6	N30 06.7	E031 24.1	336
37	N30 07.7	E031 24.4	249	E7	N30 06.7	E031 24.1	339
38	N30 07.7	E031 24.4	252	E8	N30 06.7	E031 24.2	339
39	N30 07.6	E031 24.4	257	E9, E9R	N30 06.6	E031 24.2	342
40	N30 07.6	E031 24.4	260	E9L	N30 06.6	E031 24.2	341
41	N30 07.5	E031 24.4	267	E10	N30 06.7	E031 24.2	330
42	N30 07.5	E031 24.5	272	E11, E11R	N30 06.6	E031 24.3	345
301	N30 06.5	E031 23.6	375	E11L	N30 06.6	E031 24.2	345
302	N30 06.5	E031 23.6	376	E12, E13	N30 06.7	E031 24.3	344
303, 304	N30 06.4	E031 23.6	376	E14	N30 06.7	E031 24.2	341
305, 306	N30 06.4	E031 23.5	376	E201	N30 06.9	E031 24.1	330
307	N30 06.5	E031 23.5	376	E202, E203	N30 06.9	E031 24.1	329
308	N30 06.5	E031 23.5	375	E204	N30 06.6	E031 24.3	347
309	N30 06.5	E031 23.4	370	E205	N30 06.7	E031 24.4	364
310, 311	N30 06.4	E031 23.4	372	E206	N30 06.7	E031 24.5	364
312	N30 06.4	E031 23.4	371	E207	N30 06.8	E031 24.5	364
313	N30 06.3	E031 23.8	385	E208	N30 06.8	E031 24.5	362
314	N30 06.2	E031 23.8	386	E209	N30 06.8	E031 24.6	358
315	N30 06.2	E031 23.7	383	E210	N30 06.8	E031 24.6	355
				E211	N30 06.9	E031 24.6	352
				E212	N30 06.9	E031 24.6	350

CHANGES: Stands C1 thru C5 and E208 thru E212.

HECA/CAI

CAIRO, EGYPT

CAIRO INTL

INS COORDINATES							
STAND No.	COORDINATES		ELEV	STAND No.	COORDINATES		ELEV
F1	N30 06.6	E031 23.9	375		GENERAL AVIATION APRON		
F2	N30 06.6	E031 23.9	376				
F3	N30 06.5	E031 23.9	376	1A, 1B	N30 07.5	E031 24.8	
F5, F5A/B	N30 06.5	E031 23.9	377	1C thru 1L	N30 07.4	E031 24.8	
F7	N30 06.5	E031 24.0	378	1M thru 1P	N30 07.3	E031 24.8	
F7A	N30 06.5	E031 24.0	379	2A	N30 07.5	E031 24.8	320
F7B, F8	N30 06.5	E031 24.0	378	2B	N30 07.5	E031 24.8	318
F9	N30 06.6	E031 24.0	380	2C	N30 07.5	E031 24.8	321
F9A	N30 06.6	E031 24.0	381	2D	N30 07.5	E031 24.8	325
F9B	N30 06.6	E031 24.0	380	2E	N30 07.5	E031 24.8	324
G1	N30 06.6	E031 23.8	375	2F	N30 07.5	E031 24.8	323
G2, G3	N30 06.5	E031 23.8	376	2G	N30 07.5	E031 24.8	327
G4	N30 06.4	E031 23.8	377	2H	N30 07.5	E031 24.8	325
G5	N30 06.4	E031 23.7	376	2I	N30 07.5	E031 24.8	324
G5A	N30 06.4	E031 23.7	377	2J	N30 07.4	E031 24.8	330
G5B	N30 06.4	E031 23.7	376	2K	N30 07.4	E031 24.8	329
G7, G8	N30 06.5	E031 23.7	376	2L	N30 07.4	E031 24.8	327
G8A	N30 06.5	E031 23.7	377	3A	N30 07.6	E031 24.7	
G8B	N30 06.5	E031 23.7	376	3B	N30 07.5	E031 24.7	
G9	N30 06.5	E031 23.7	375	3C	N30 07.5	E031 24.8	
H4-1	N30 07.3	E031 23.3	202	3D	N30 07.6	E031 24.8	316
H4-2, H4-3	N30 07.4	E031 23.3	203	3E	N30 07.6	E031 24.8	318
H4-4	N30 07.4	E031 23.3	204	3F, 3G	N30 07.6	E031 24.8	320
H4-5	N30 07.4	E031 23.4	204	UN1	N30 07.4	E031 24.9	308
H4-6, H4-7	N30 07.4	E031 23.4	205	UN2	N30 07.4	E031 24.9	303
H4-8, H4-9	N30 07.4	E031 23.4	206				
H4-10	N30 07.4	E031 23.4	207				
H4-11	N30 07.4	E031 23.4	207				
H4-12, H4-13	N30 07.5	E031 23.5	207				
VIP	N30 07.8	E031 24.0	212				
	PS APRON						
1	N30 07.5	E031 24.4	275				
2	N30 07.5	E031 24.5	276				
3	N30 07.5	E031 24.5	276				
4	N30 07.4	E031 24.5	278				
5	N30 07.4	E031 24.5	279				
6	N30 07.4	E031 24.5	281				
7	N30 07.4	E031 24.5	283				
8	N30 07.4	E031 24.5	284				
9	N30 07.4	E031 24.5	286				

HECA/CAI



Standard CAIRO, EGYPT CAIRO INTL

STRAIGHT-IN RWY		A	B	C	D
05L	ILS	440' (250') R650m ①	452' (262') R650m ①	460' (270') R650m ①	471' (281') R650m ①
	ALS out	R1300m	R1300m	R1300m	R1400m
	LOC ②	760' (570') R1500m	760' (570') R1500m	760' (570') R1900m	760' (570') R1900m
	ALS out	R1500m	R1500m	R2400m	R2400m
	RNP (LNAV) ②	760' (570') R1900m	760' (570') R1900m	760' (570') R1900m	760' (570') R1900m
	ALS out	R1900m	R1900m	R2400m	R2400m
05C	VOR ②	760' (570') R1900m	760' (570') R1900m	760' (570') R1900m	760' (570') R1900m
	ALS out	R1900m	R1900m	R2400m	R2400m
	CAT 2 ILS	482' (100') RA104' R350m	491' (109') RA111' R350m	503' (121') RA119' R400m	517' (135') RA129' R400m
	ILS FULL	611' (229') R600m	623' (241') R600m	631' (249') R600m	642' (260') R600m
	TDZ or CL out	R600m ①	R600m ①	R600m ①	R600m ①
	ALS out	R1200m	R1300m	R1300m	R1300m
05R	LOC ②	710' (328') R800m	710' (328') R800m	710' (328') R800m	710' (328') R800m
	ALS out	R1500m	R1500m	R1500m	R1500m
	RNP (LNAV) ②	710' (328') R1000m	710' (328') R1000m	710' (328') R1000m	710' (328') R1000m
	ALS out	R1500m	R1500m	R1500m	R1500m
	VOR ②	710' (328') R1000m	710' (328') R1000m	710' (328') R1000m	710' (328') R1000m
	ALS out	R1500m	R1500m	R1500m	R1500m
23L	CAT 2 ILS	548' (100') RA90' R350m	548' (100') RA90' R350m	560' (112') RA100' R350m	574' (126') RA111' R400m
	ILS FULL	677' (229') R600m	689' (241') R600m	697' (249') R600m	708' (260') R600m
	TDZ or CL out	R600m ①	R600m ①	R600m ①	R600m ①
	ALS out	R1200m	R1300m	R1300m	R1300m
	LOC ②	800' (352') R900m	800' (352') R900m	800' (352') R900m	800' (352') R900m
	ALS out	R1500m	R1500m	R1600m	R1600m
23L	RNP (LNAV) ②	820' (372') R1000m	820' (372') R1000m	820' (372') R1000m	820' (372') R1000m
	ALS out	R1500m	R1500m	R1700m	R1700m
	CAT 2 ILS	567' (100') RA101' R350m	567' (100') RA101' R350m	579' (112') RA115' R350m	593' (126') RA130' R400m
	ILS FULL	697' (230') R600m	709' (242') R600m	717' (250') R600m	728' (261') R600m
	TDZ or CL out	R600m ①	R600m ①	R600m ①	R600m ①
	ALS out	R1200m	R1300m	R1300m	R1300m
23L	LOC ②	970' (503') R1500m	970' (503') R1500m	970' (503') R1600m	970' (503') R1600m
	ALS out	R1500m	R1500m	R2400m	R2400m

① RVR 750m when a Flight Director or Autopilot or HUD to DA is not used.

② Continuous Descent Final Approach.

HECA/CAI



Standard CAIRO, EGYPT CAIRO INTL

STRAIGHT-IN RWY		A	B	C	D
23L (contd)	RNP (LNAV) ①	830' (363')	830' (363')	830' (363')	830' (363')
	ALS out	R1000m	R1000m	R1000m	R1000m
	VOR ①	970' (503')	970' (503')	970' (503')	970' (503')
	ALS out	R1500m	R1500m	R1700m	R1700m
23C	CAT 2 ILS	475' (100')	484' (109')	496' (121')	510' (135')
		RA107' R350m	RA116' R350m	RA129' R400m	RA143' R400m
	ILS	605' (230')	617' (242')	625' (250')	636' (261')
	ALS out	R900m	R900m	R900m	R900m
	LOC ①	760' (385')	760' (385')	760' (385')	760' (385')
	ALS out	R1100m	R1100m	R1100m	R1100m
	RNP (LNAV) ①	810' (435')	810' (435')	810' (435')	810' (435')
	ALS out	R1600m	R1600m	R1600m	R1600m
	VOR ①	760' (385')	760' (385')	760' (385')	760' (385')
	ALS out	R1400m	R1400m	R1400m	R1400m
23R	ILS	658' (459')	670' (471')	678' (479')	689' (490')
	ALS out	R1500m	R1500m	R2000m	R2100m
	LOC ①	780' (581')	780' (581')	780' (581')	780' (581')
	RNP (LNAV) ①	830' (631')	830' (631')	830' (631')	830' (631')
	VOR ①	780' (581')	780' (581')	780' (581')	780' (581')

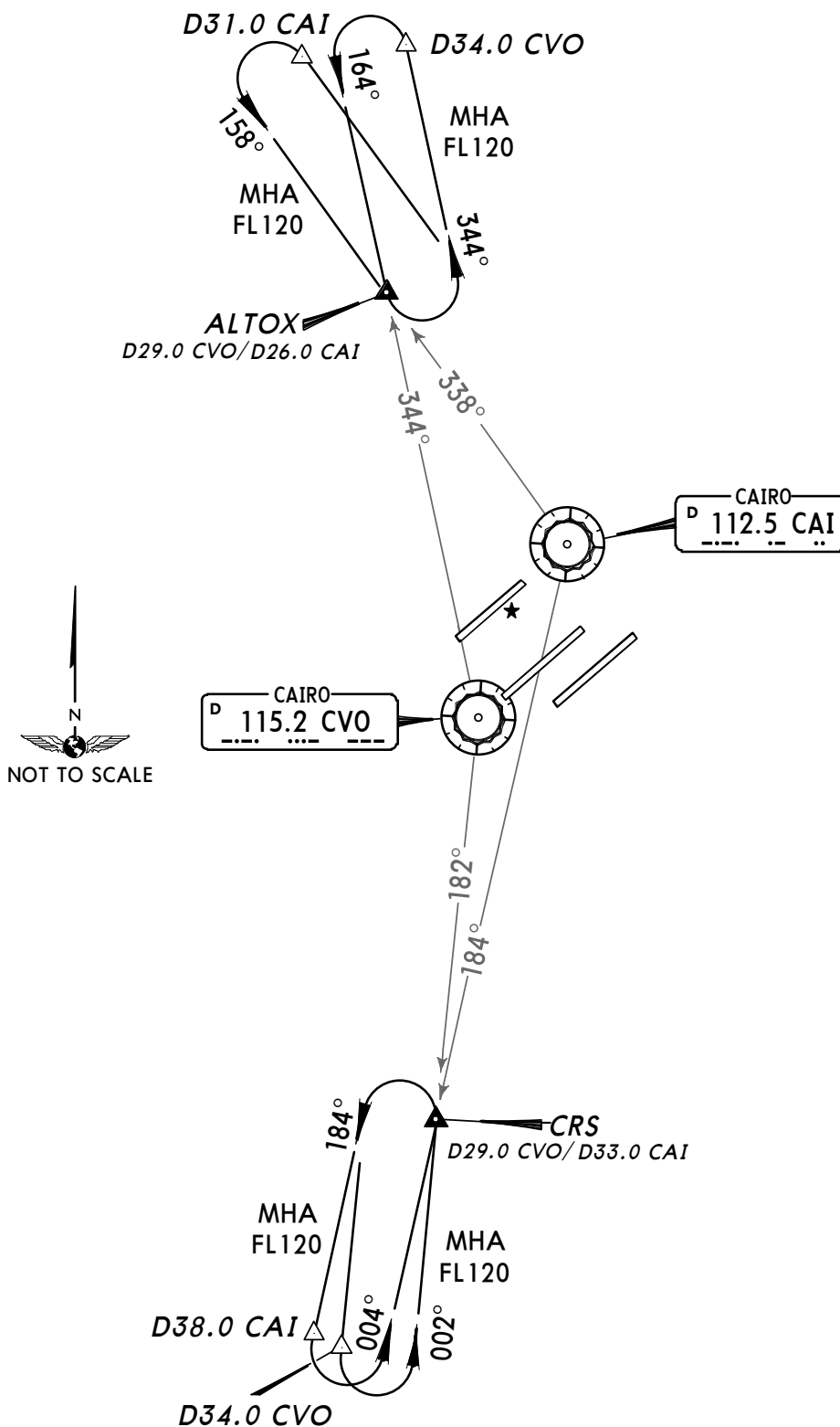
① Continuous Descent Final Approach.

TAKE-OFF

	Low Visibility Take-off			Day: RL or RCLM Night: RL or CL	Adequate vis ref (Day only)
	RL, CL & relevant RVR	RL & CL	Day: RL & RCLM Night: RL or CL		
A					
B	TDZ, MID, RO				
C	R150m	R200m	R300m	400m	500m
D					

CAIRO OUTER FIXES HOLDING PROCEDURES

Only to be used, when excessive holdings are expected.
Vectors to compulsory reporting points ALTOX and CRS
will be provided by ATC.

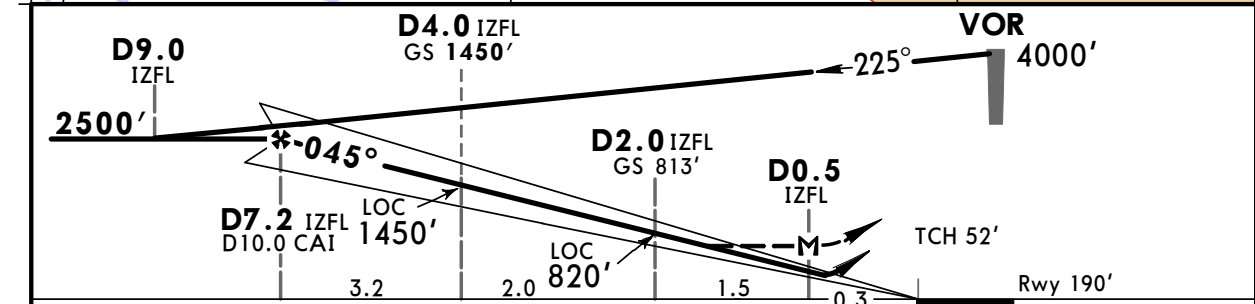
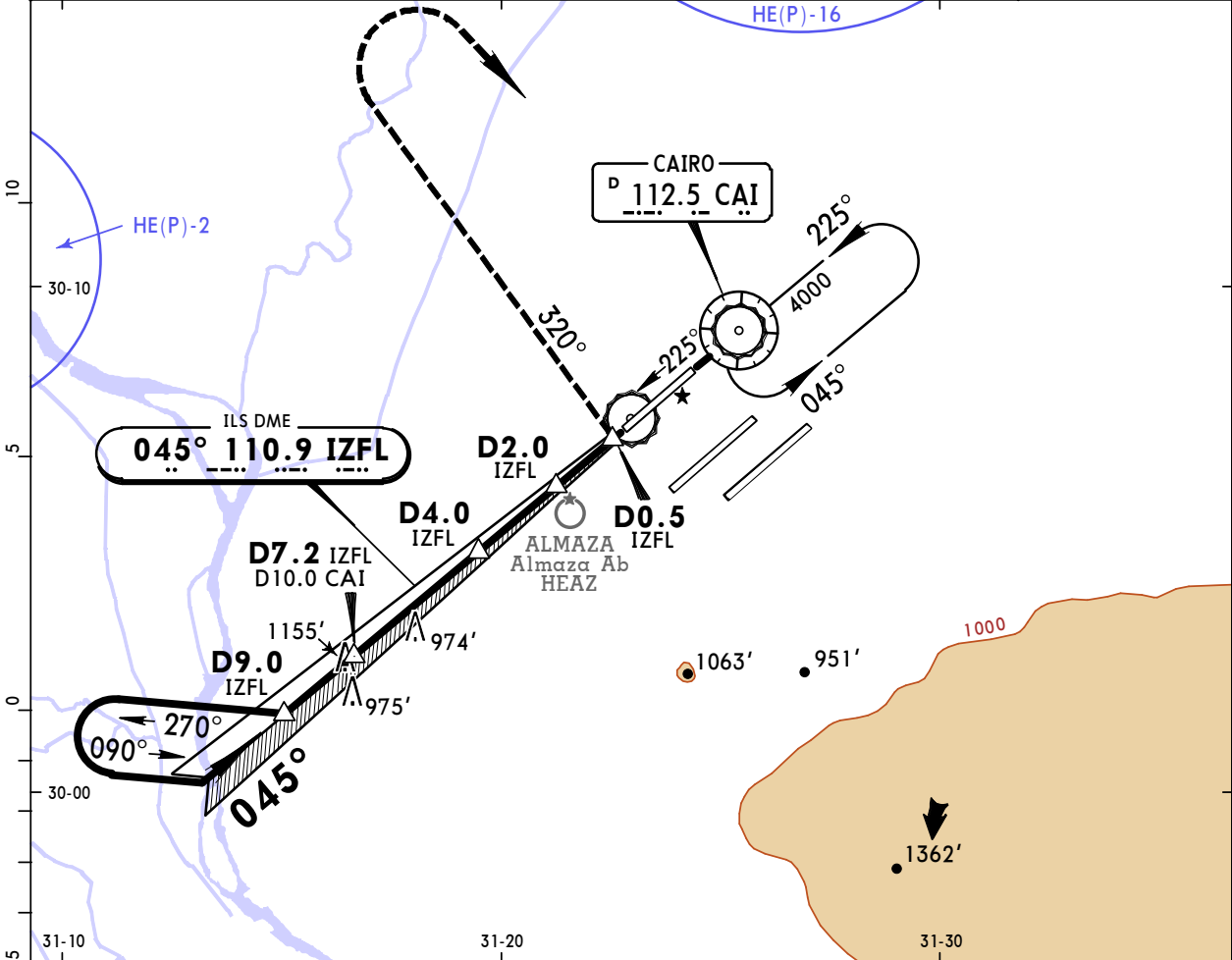


HECA/CAI CAIRO INTL

JEPPESSEN
2 NOV 18 (11-1) Eff 8 Nov

CAIRO, EGYPT ILS or LOC Rwy 05L

BRIEFING STRIP™	D-ATIS 122.6	CAIRO Approach (R) 119.050	CAIRO Tower 118.1	South Ground 120.4	North 121.9	
	LOC 110.9	Final Apch Crs 045°	GS D4.0 IZFL 1450' (1260')	ILS DA(H) Refer to Minimums	Apt Elev 467' Rwy 190'	
	MISSED APCH: Immediately turn LEFT onto 320° climbing to 2500', then turn RIGHT to VOR and hold at 4000', or as directed.					
Alt Set: hPa		Rwy Elev: 7 hPa	Trans level: FL 60	Trans alt: 4500'		MSA CAI VOR



Gnd speed-Kts	70	90	100	120	140	160		2500' onto 320° LT	
ILS GS or LOC Descent Angle	3.00°	372	478	531	637	743			849
MAP at D0.5 IZFL									

PANS OPS	ILS STRAIGHT-IN LANDING RWY 05L			
	DA(H) A: 440' (250') C: 460' (270') B: 452' (262') D: 471' (281')		LOC (GS out) MDA(H) 760' (570')	
	FULL		ALS out	
	A			
B	RVR 720m VIS 800m	1200m	RVR 720m VIS 800m	RVR 1500m VIS 1600m
C				
D			1200m	

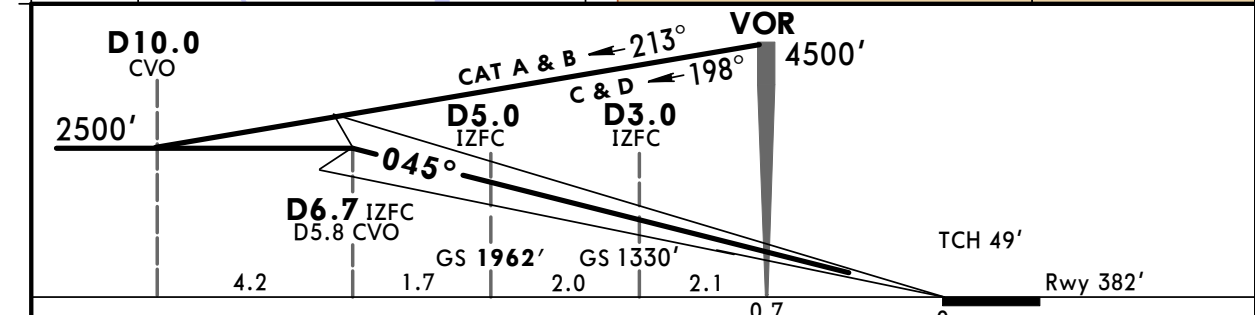
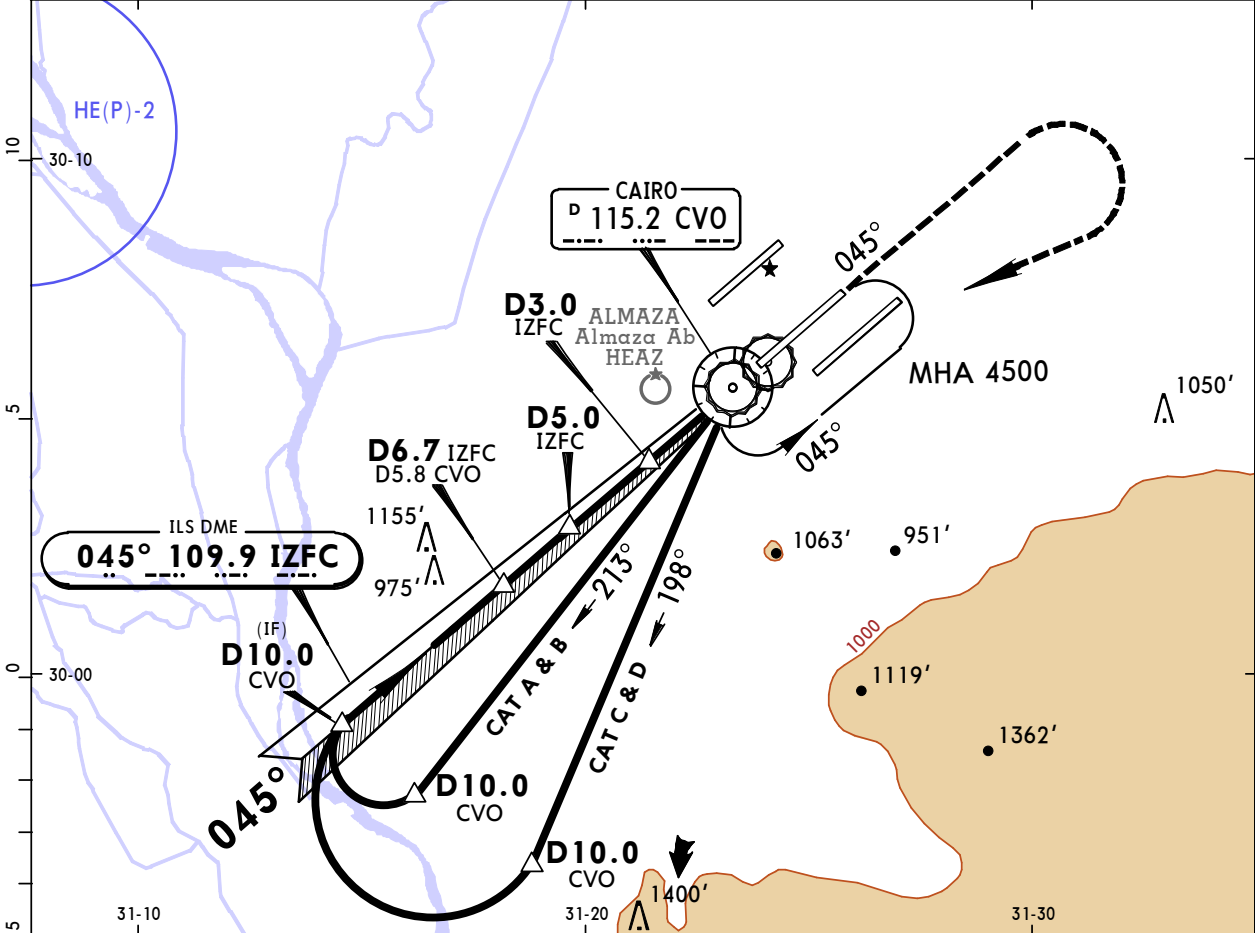
CHANGES: Procedure identifier. Missed apch.

HECA/CAI CAIRO INTL

JEPPESEN
6 SEP 19 **(11-2A)** Eff 12 Sep

CAIRO, EGYPT CAT II ILS Rwy 05C

BRIEFING STRIP™	D-ATIS 122.6	CAIRO Approach (R) 119.050	CAIRO Tower 118.1	South Ground 120.4	North 121.9	
	LOC 109.9	Final Apch Crs 045°	GS D5.0 IZFC 1962' (1580')	CAT II ILS RA/DA(H) Refer to Minimums	Apt Elev 467' Rwy 382'	
	MISSED APCH: Climb STRAIGHT AHEAD to 2000', then turn RIGHT climbing to reach VOR at 4500' and hold, or as directed.					
Alt Set: hPa		Rwy Elev: 14 hPa	Trans level: FL 60	Trans alt: 4500'		
Special Aircrew and Acft Certification Required.						



Gnd speed-Kts	70	90	100	120	140	160		2000' ↑
GS	3.00°	372	478	531	637	849		

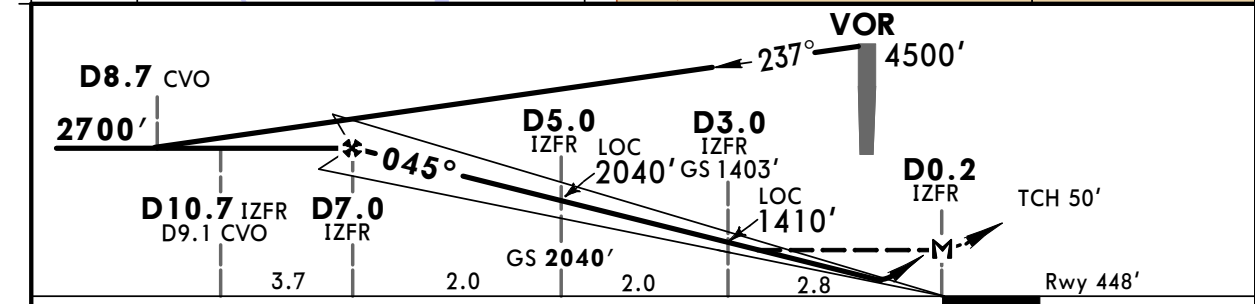
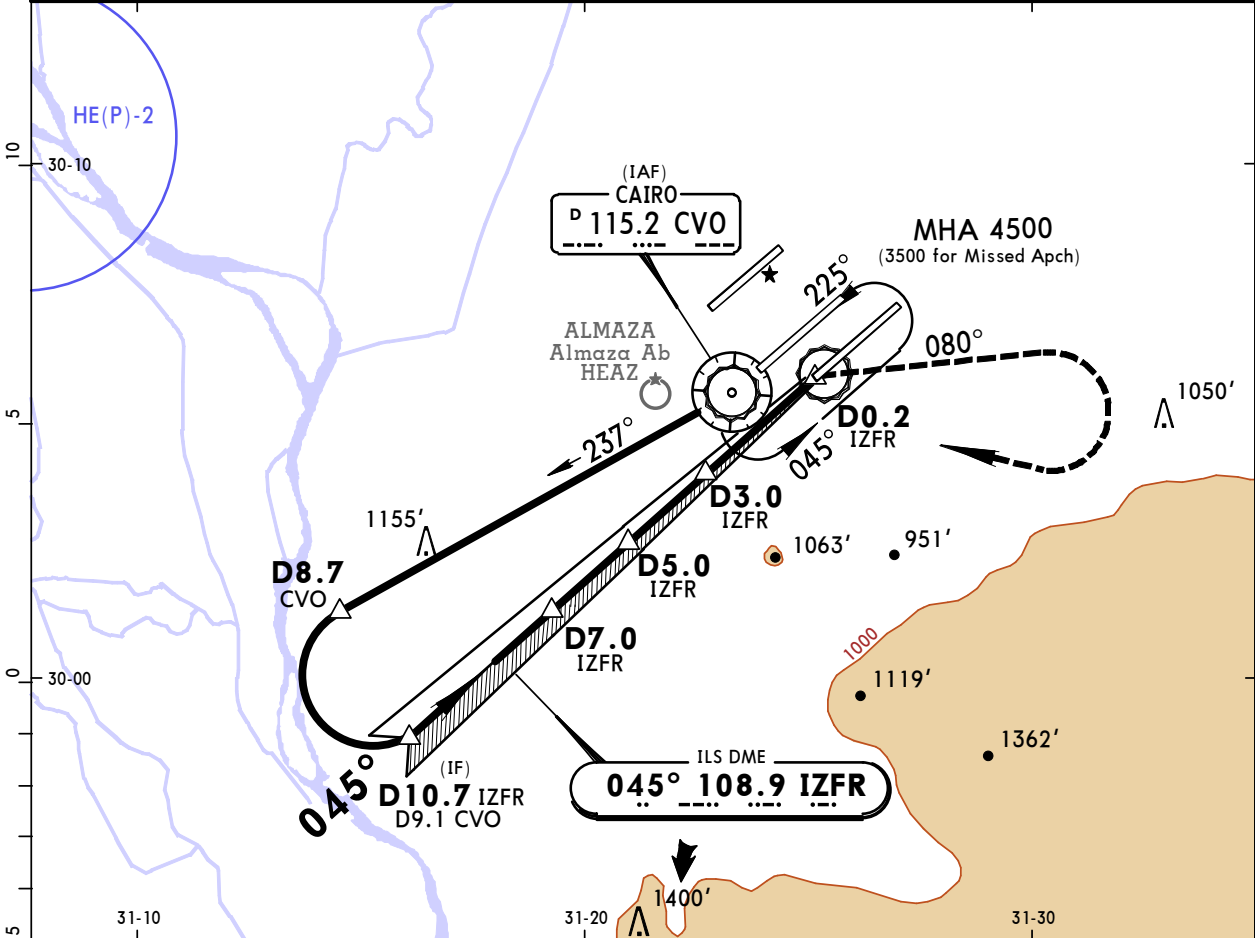
STRAIGHT-IN LANDING RWY 05C CAT II ILS			
A RA 104' DA(H) 482'(100')	B RA 111' DA(H) 491'(109')	C RA 119' DA(H) 503'(121')	D RA 129' DA(H) 517'(135')
RVR 350m		RVR 400m	

HECA/CAI CAIRO INTL

JEPPESEN
6 SEP 19 **11-3** Eff 12 Sep

CAIRO, EGYPT ILS Rwy 05R

BRIEFING STRIP™	D-ATIS 122.6	CAIRO Approach (R) 119.050	CAIRO Tower 118.1	South Ground 120.4	North 121.9	<p>MSA CVO VOR</p>
	LOC IZFR 108.9	Final Apch Crs 045°	GS D5.0 IZFR 2040' (1592')	ILS DA(H) Refer to Minimums	Apt Elev 467' Rwy 448'	
	MISSED APCH: Immediately turn RIGHT to 080° climbing to 2000', then turn RIGHT climbing to reach VOR at 3500' and hold, or as directed.					
	Alt Set: hPa	Rwy Elev: 16 hPa	Trans level: FL 60	Trans alt: 4500'		



Gnd speed-Kts	70	90	100	120	140	160		
ILS GS or LOC Descent Angle	3.00°	372	478	531	637	743		849
MAP at D0.2 IZFR								

STRAIGHT-IN LANDING RWY 05R				
ILS DA(H) A: 677' (229') C: 697' (249') B: 689' (241') D: 708' (260')			LOC (GS out) MDA(H) 800' (352')	
FULL	TDZ or CL out	ALS out	ALS out	
A				
B	RVR 600m VIS 800m	RVR 720m VIS 800m	1200m	RVR 720m VIS 800m
C				RVR 1500m VIS 1600m
D				1200m
				2000m

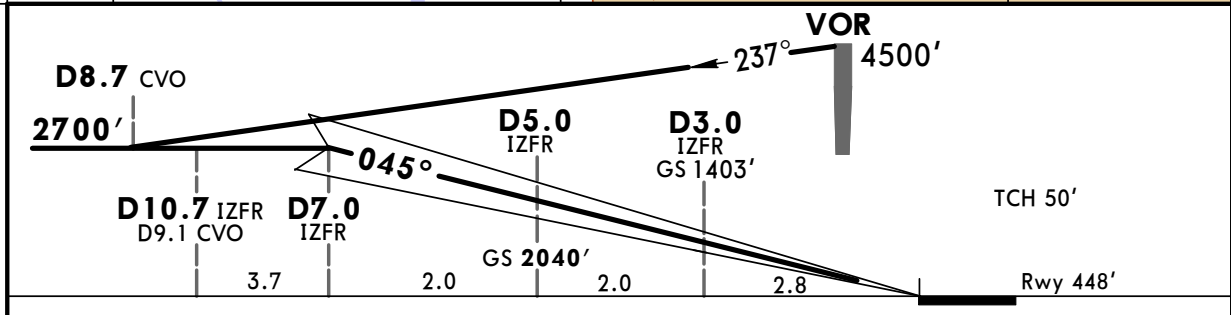
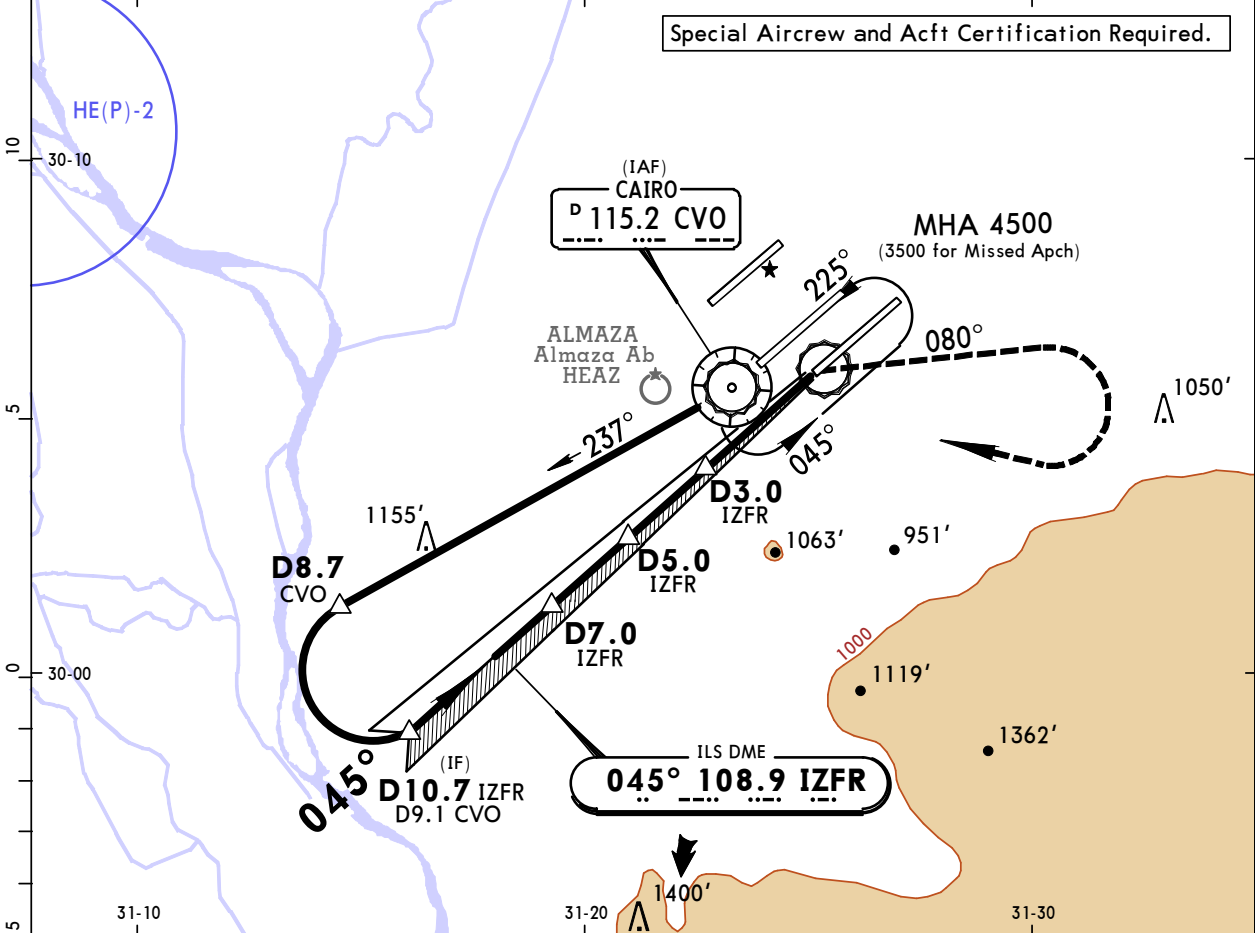
HECA/CAI
CAIRO INTL

JEPPESEN
6 SEP 19 **(11-3A)** Eff 12 Sep

CAIRO, EGYPT
CAT II ILS Rwy 05R

BRIEFING STRIP™	D-ATIS 122.6	CAIRO Approach (R) 119.050	CAIRO Tower 118.1	South Ground 120.4	North 121.9		
	LOC IZFR 108.9	Final Apch Crs 045°	GS D5.0 IZFR 2040' (1592')	CAT II ILS RA/DA(H) Refer to Minimums	Apt Elev 467' Rwy 448'		
	MISSED APCH: Immediately turn RIGHT to 080° climbing to 2000', then turn RIGHT climbing to reach VOR at 3500' and hold, or as directed.						
Alt Set: hPa		Rwy Elev: 16 hPa	Trans level: FL 60		Trans alt: 4500'		MSA CVO VOR

Special Aircrew and Acft Certification Required.



Gnd speed-Kts	70	90	100	120	140	160	
GS	3.00°	372	478	531	637	849	

STRAIGHT-IN LANDING RWY 05R CAT II ILS		
AB RA 90' DA(H) 548' (100')	C RA 100' DA(H) 560' (112')	D RA 111' DA(H) 574' (126')

PANS OPS	RVR 350m	RVR 400m
----------	-----------------	-----------------

CHANGES: Minimums.

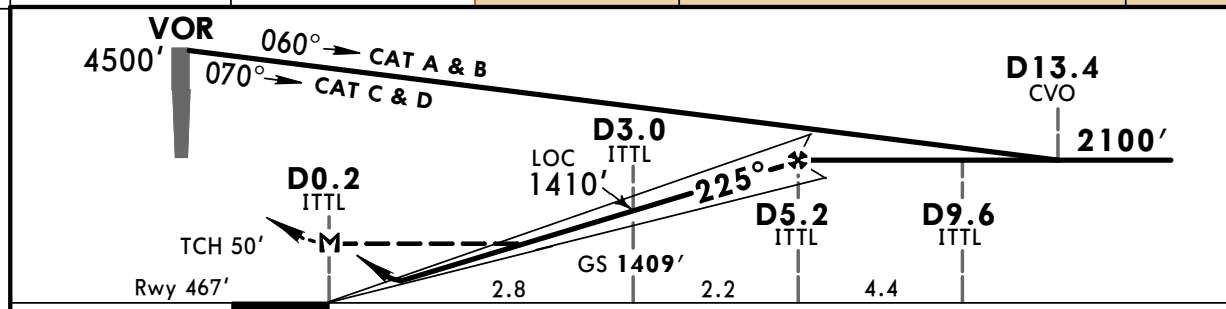
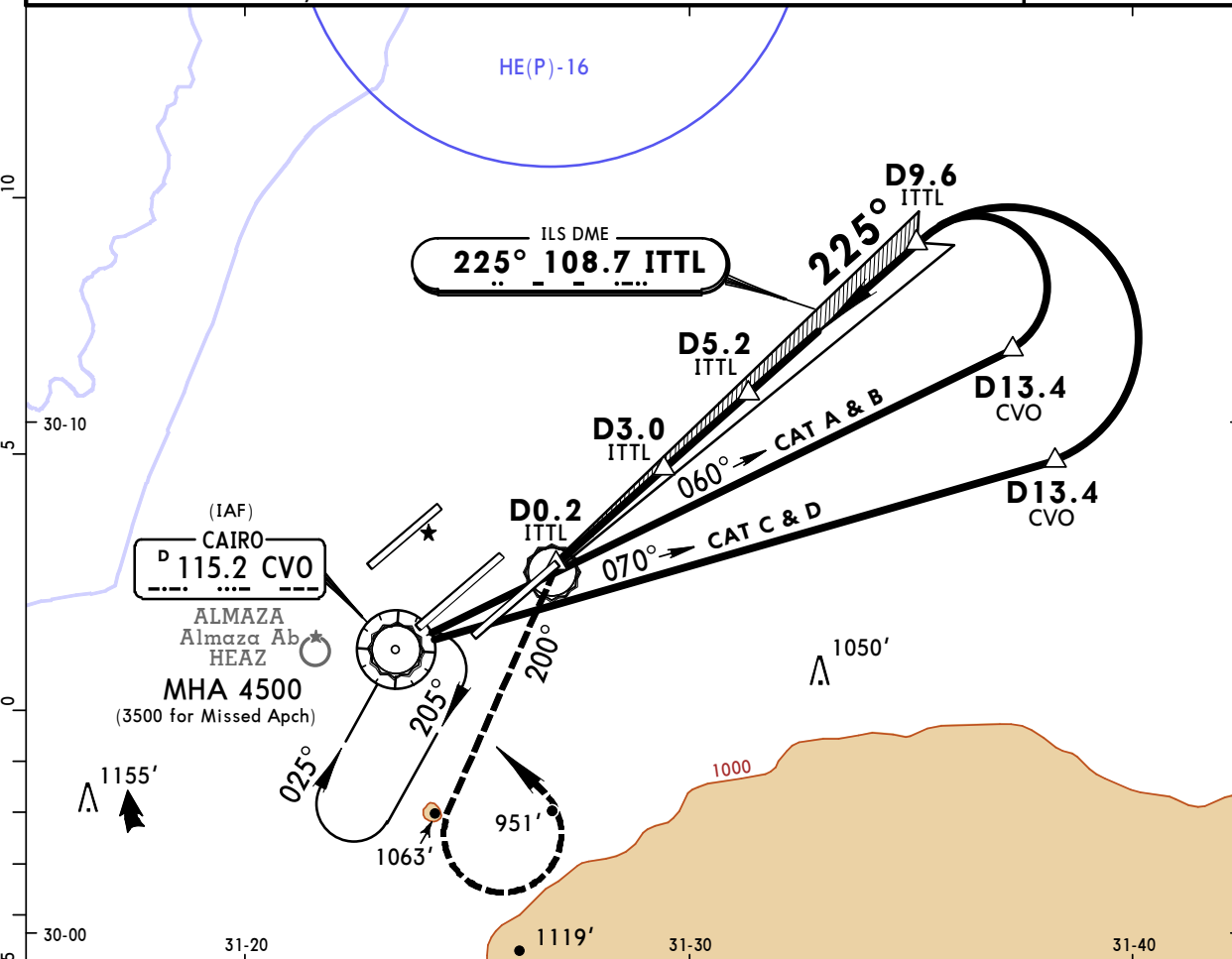
HECA/CAI CAIRO INTL



6 SEP 19 **11-4** Eff 12 Sep

CAIRO, EGYPT ILS Rwy 23L

BRIEFING STRIP™	D-ATIS 122.6	CAIRO Approach (R) 119.050	CAIRO Tower 118.1	South 120.4	Ground 121.9		
	LOC ITTL 108.7	Final Apch Crs 225°	GS D3.0 ITTL 1409' (942')	ILS DA(H) Refer to Minimums	Apt Elev 467'		
	MISSED APCH: Immediately turn LEFT to 200° climbing to 2000', then turn LEFT climbing to reach VOR at 3500' and hold, or as directed.						
Alt Set: hPa		Rwy Elev: 17 hPa	Trans level: FL 60		Trans alt: 4500'		



Gnd speed-Kts	70	90	100	120	140	160		
ILS GS or LOC Descent Angle	3.00°	372	478	531	637	743		849
MAP at D0.2 ITTL								

STRAIGHT-IN LANDING RWY 23L			
ILS DA(H)		LOC (GS out) MDA(H)	
A: 697' (230')	C: 717' (250')	970' (503')	
B: 709' (242')	D: 728' (261')		
FULL	TDZ or CL out	ALS out	ALS out

PANS OPS	A			RVR 720m VIS 800m	RVR 1500m VIS 1600m
	B	RVR 600m VIS 800m	RVR 720m VIS 800m		
	C		1200m	RVR 1500m VIS 1600m	2400m
	D				

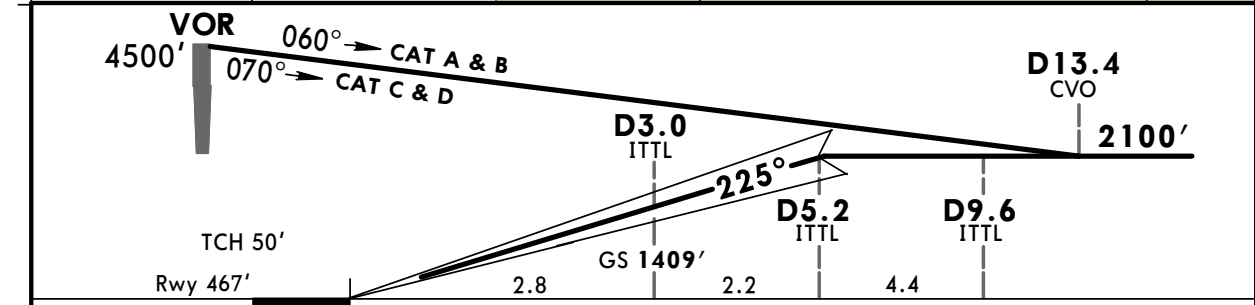
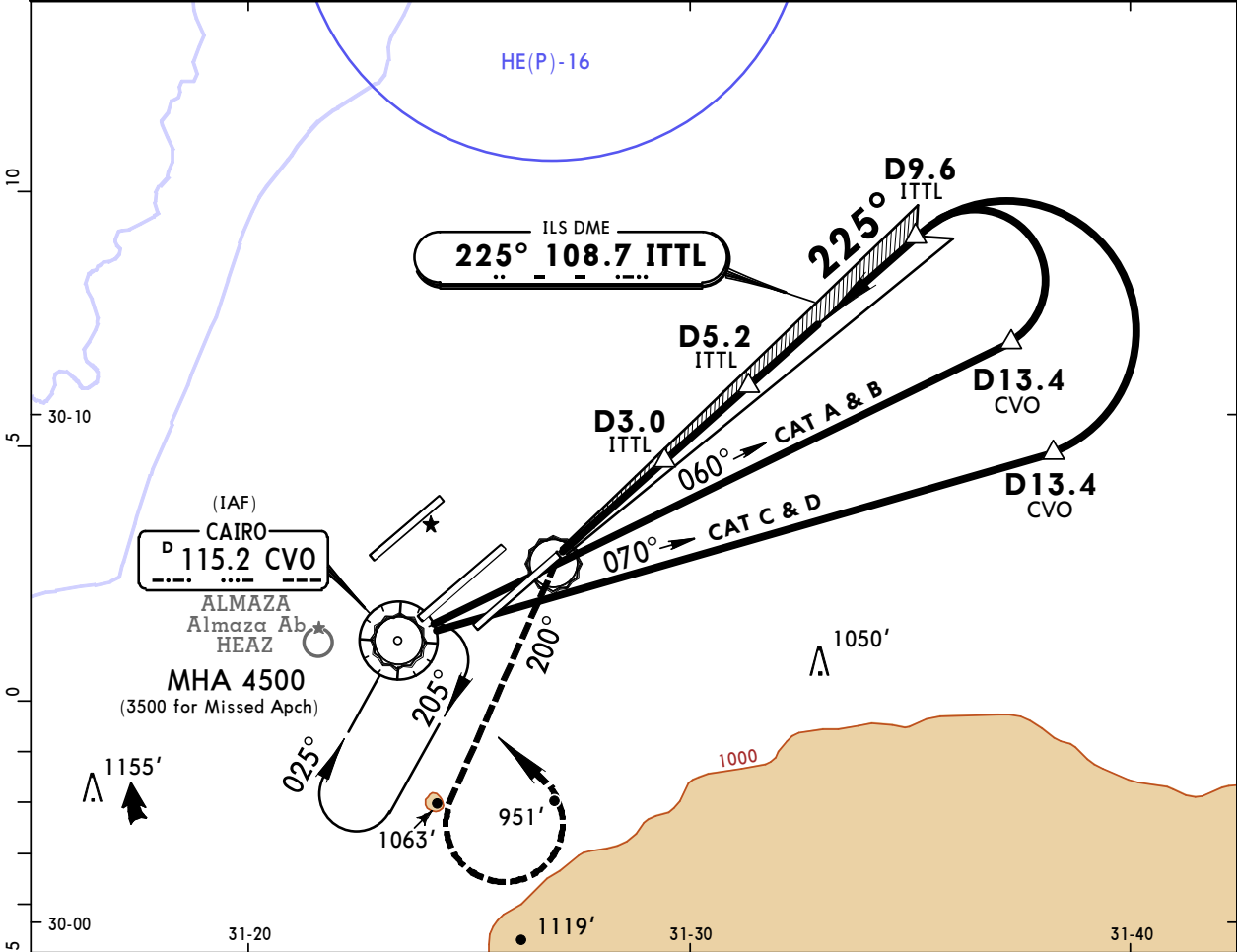
CHANGES: None.

HECA/CAI CAIRO INTL

JEPPESEN
6 SEP 19 **(11-4A)** Eff 12 Sep

CAIRO, EGYPT CAT II ILS Rwy 23L

BRIEFING STRIP™	D-ATIS 122.6	CAIRO Approach (R) 119.050	CAIRO Tower 118.1	South Ground 120.4	North 121.9	<p>MSA CVO VOR</p>	
	LOC ITTL 108.7	Final Apch Crs 225°	GS D3.0 ITTL 1409' (942')	CAT II ILS RA/DA(H) Refer to Minimums	Apt Elev 467' Rwy 467'		
	<p>MISSED APCH: Immediately turn LEFT to 200° climbing to 2000', then turn LEFT climbing to reach VOR at 3500' and hold, or as directed.</p>						
Alt Set: hPa		Rwy Elev: 17 hPa	Trans level: FL 60		Trans alt: 4500'		



Gnd speed-Kts	70	90	100	120	140	160	<p>2000' on 200°</p>
GS	3.00°	372	478	531	637	849	

STRAIGHT-IN LANDING RWY 23L CAT II ILS		
AB RA 101' DA(H) 567' (100')	C RA 115' DA(H) 579' (112')	D RA 130' DA(H) 593' (126')

PANS OPS	RVR 350m	RVR 400m
----------	-----------------	-----------------

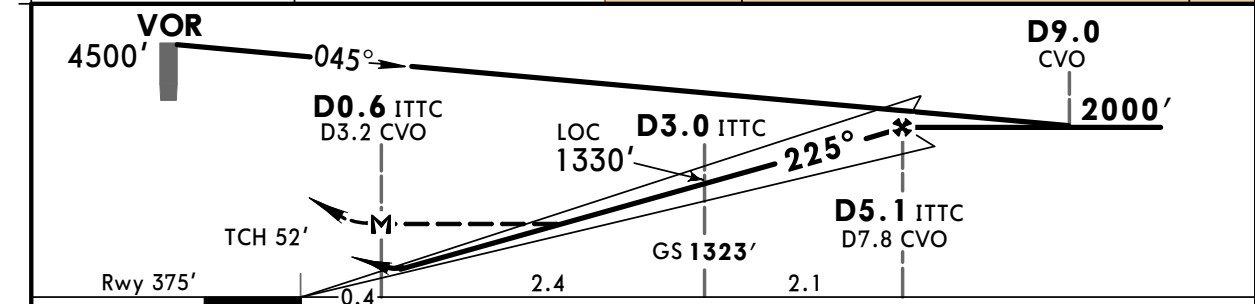
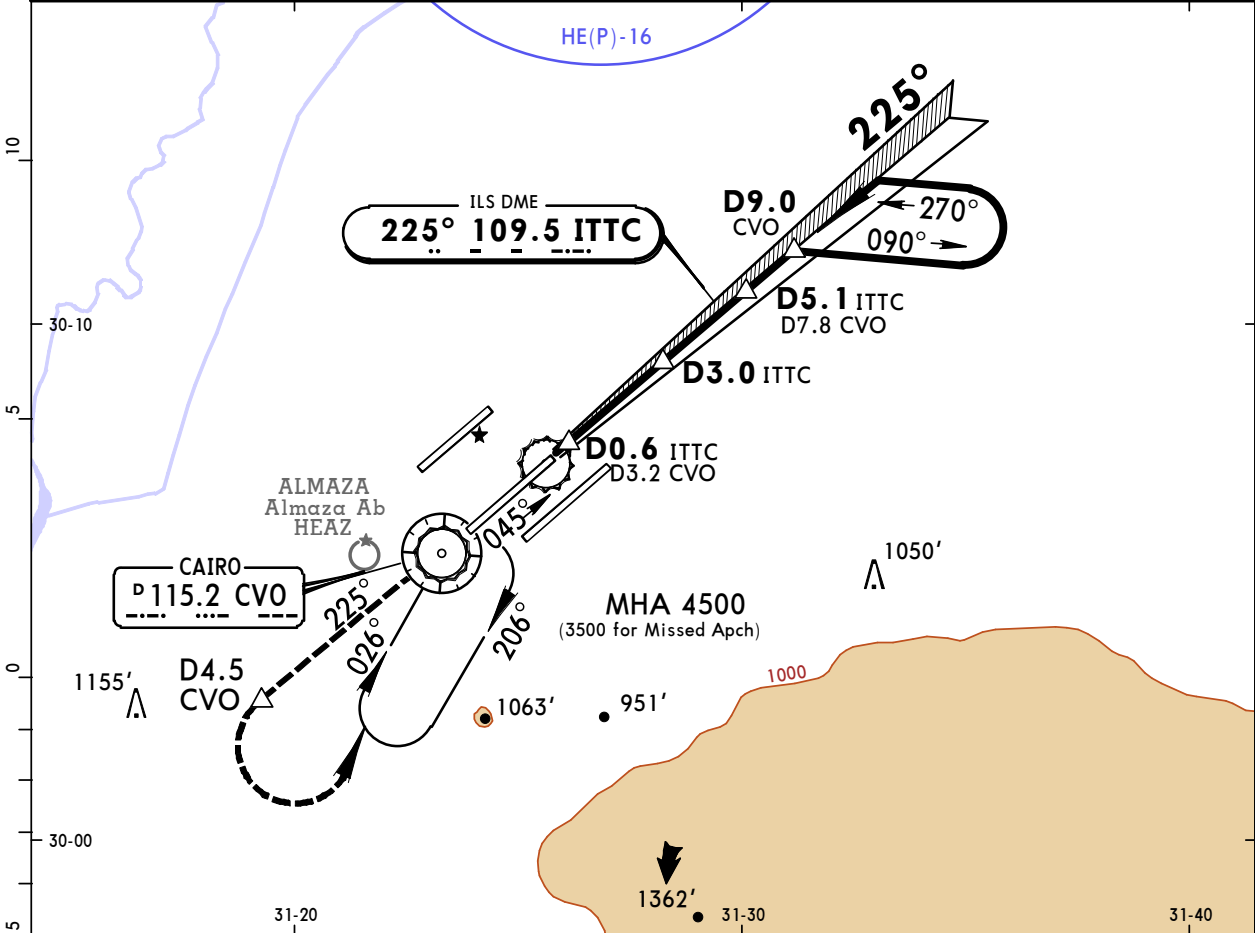
HECA/CAI CAIRO INTL



6 SEP 19 **11-5** Eff 12 Sep

CAIRO, EGYPT ILS Rwy 23C

BRIEFING STRIP™	D-ATIS 122.6	CAIRO Approach (R) 119.050	CAIRO Tower 118.1	South 120.4	Ground 121.9		
	LOC ITTC 109.5	Final Apch Crs 225°	GS D3.0 ITTC 1323' (948')	ILS DA(H) Refer to Minimums	Apt Elev 467' Rwy 375'		
	MISSED APCH: Climb STRAIGHT AHEAD to 2000'. Not later than D4.5 CVO turn LEFT to reach VOR at 3500' and hold, or as directed.						
Alt Set: hPa		Rwy Elev: 14 hPa	Trans level: FL 60		Trans alt: 4500'		



Gnd speed-Kts	70	90	100	120	140	160		2000' whichever CVO is earlier						
ILS GS or LOC Descent Angle	3.00°								372	478	531	637	743	849
MAP at D0.6 ITTC/D3.2 CVO														

STRAIGHT-IN LANDING RWY 23C							
ILS				LOC (GS out)			
DA(H) A: 605' (230')		C: 625' (250')		MDA(H) 760' (385')			
B: 617' (242')		D: 636' (261')					
FULL		TDZ or CL out		ALS out		ALS out	
A							
B							
C	900m		1200m		900m		RVR 1500m VIS 1600m
D					1200m		

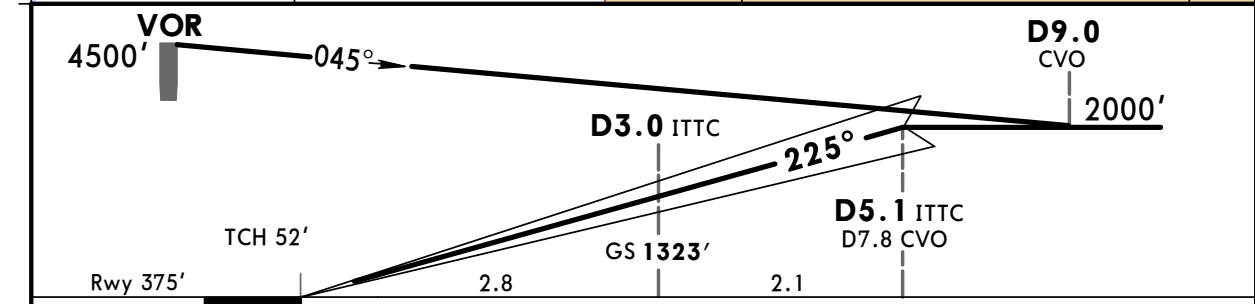
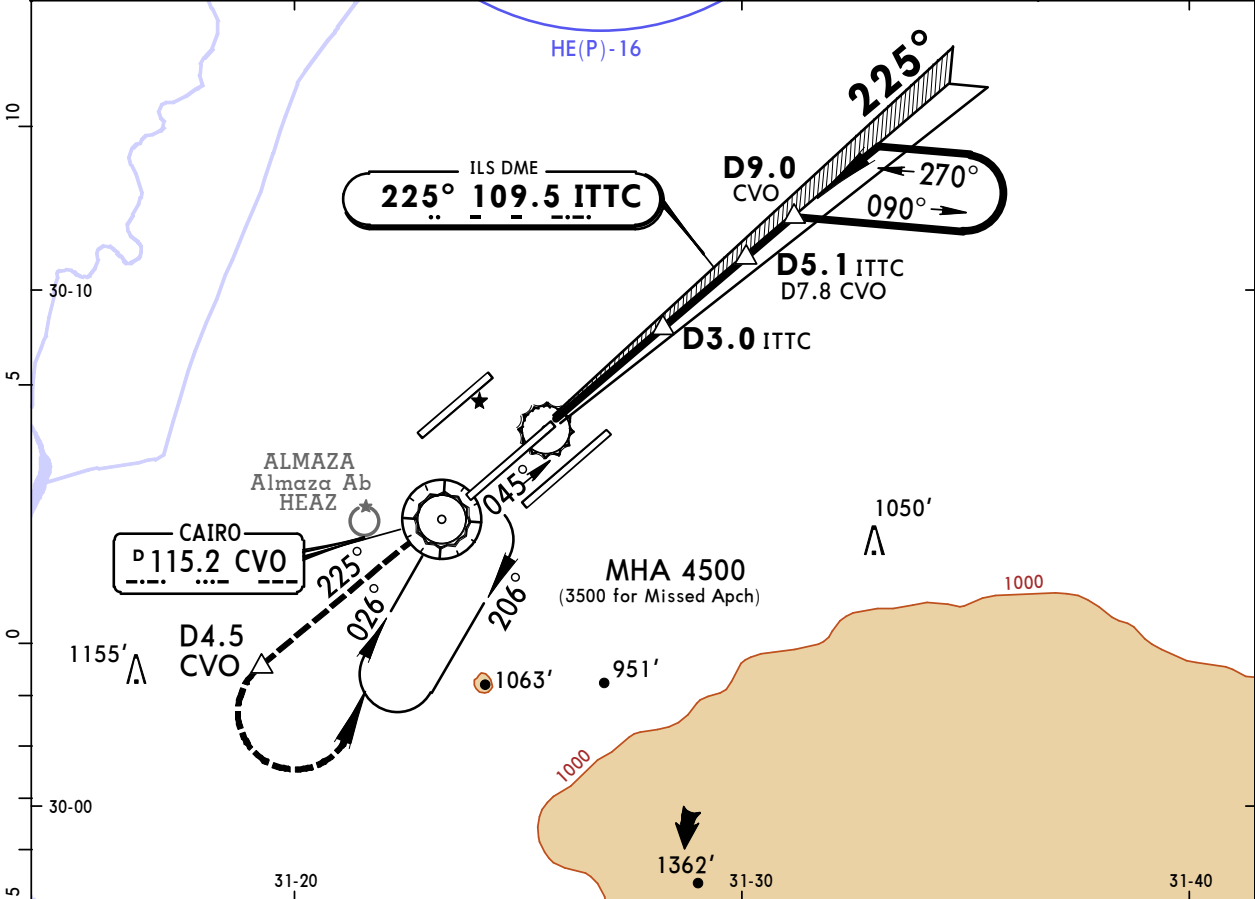
CHANGES: None.

HECA/CAI CAIRO INTL

JEPPESEN
6 SEP 19 **11-5A** Eff 12 Sep

CAIRO, EGYPT CAT II ILS Rwy 23C

BRIEFING STRIP™	D-ATIS 122.6	CAIRO Approach (R) 119.05	CAIRO Tower 118.1	South Ground 120.4	North 121.9	<p>MSA CVO VOR</p>	
	LOC ITTC 109.5	Final Apch Crs 225°	GS D3.0 ITTC 1323' (948')	CAT II ILS RA/DA(H) Refer to Minimums	Apt Elev 467' Rwy 375'		
	<p>MISSED APCH: Climb STRAIGHT AHEAD to 2000'. Not later than D4.5 CVO turn LEFT to reach VOR at 3500' and hold, or as directed.</p> <p>Alt Set: hPa Rwy Elev: 14 hPa Trans level: FL 60 Trans alt: 4500'</p> <p>Special Aircrew and Acft Certification Required.</p>						



Gnd speed-Kts	70	90	100	120	140	160	<p>2000' whichever CVO is earlier</p>
GS	3.00°	372	478	531	637	743	

STRAIGHT-IN LANDING RWY 23C CAT II ILS			
A RA 107' DA(H) 475' (100')	B RA 116' DA(H) 484' (109')	C RA 129' DA(H) 496' (121')	D RA 143' DA(H) 510' (135')
RVR 350m		RVR 400m	

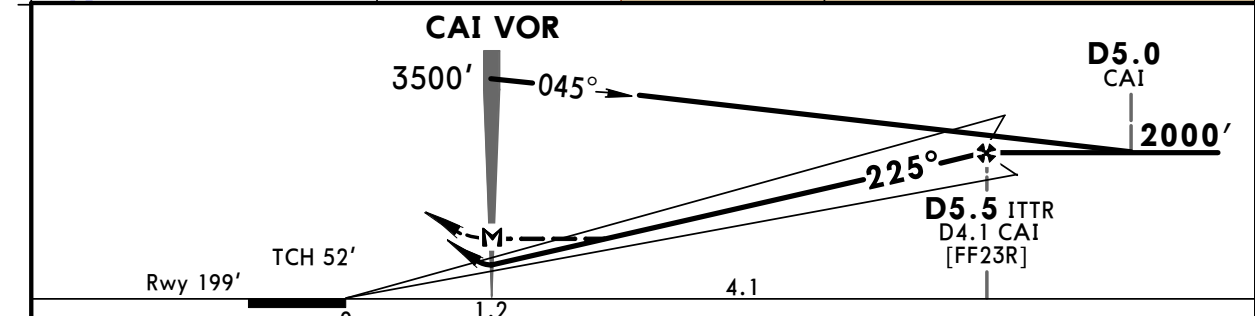
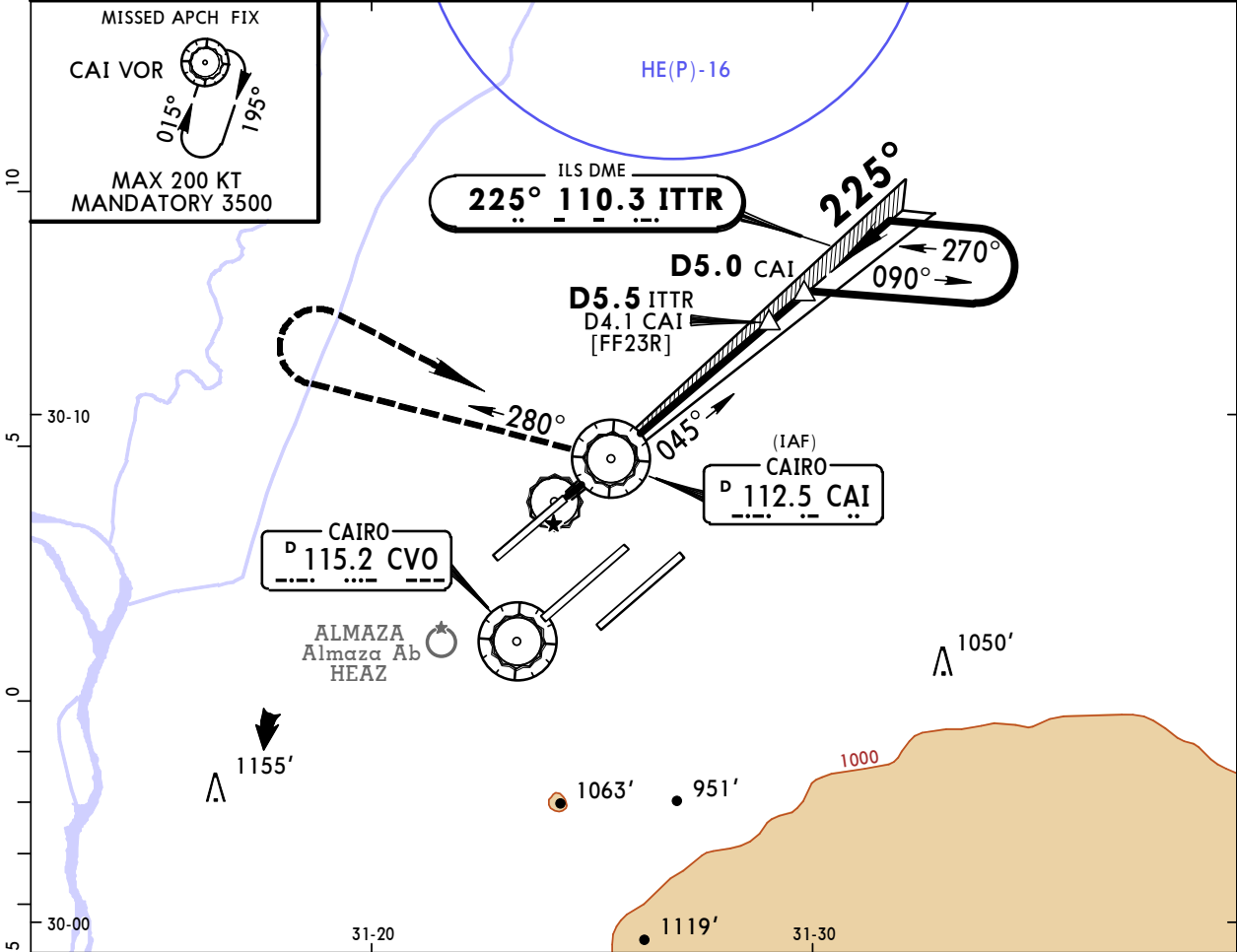
HECA/CAI CAIRO INTL



6 SEP 19 **11-6** Eff 12 Sep

CAIRO, EGYPT ILS or LOC Rwy 23R

BRIEFING STRIP™	D-ATIS 122.6	CAIRO Approach (R) 119.050	CAIRO Tower 118.1	South Ground 120.4	North 121.9	
	LOC ITTR 110.3	Final Apch Crs 225°	GS D5.7 ITTR 2000' (1801')	ILS DA(H) Refer to Minimums	Apt Elev 467' Rwy 199'	
	MISSED APCH: Immediate RIGHT turn onto track 280° climbing to 2000', then turn RIGHT to reach CAI VOR at 3500' and hold, or as directed. MAX 220 KT.					
Alt Set: hPa		Rwy Elev: 7 hPa	Trans level: FL 60		Trans alt: 4500'	



Gnd speed-Kts	70	90	100	120	140	160	HIALS	MAX	2000'	RT	280°
ILS GS or LOC Descent Angle	3.00°	372	478	531	637	743	849	220 KT			
MAP at CAI VOR											

PANS OPS	STRAIGHT-IN LANDING RWY 23R					
	ILS			LOC (GS out)		
	DA(H) A: 658' (459')		C: 678' (479')		MDA(H) 780' (581')	
	B: 670' (471')		D: 689' (490')		ALS out	
	FULL		ALS out		ALS out	
A	RVR 1500m VIS 1600m			RVR 1500m VIS 1600m		
B	2000m			2000m		
C	2100m			2100m		
D						

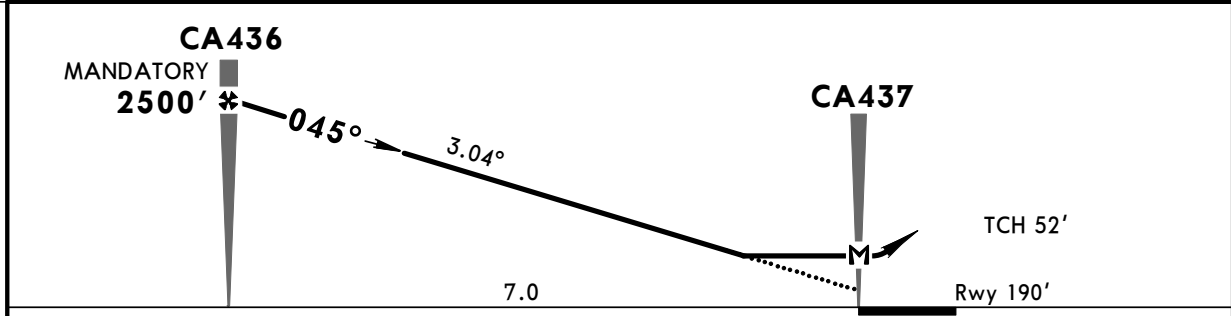
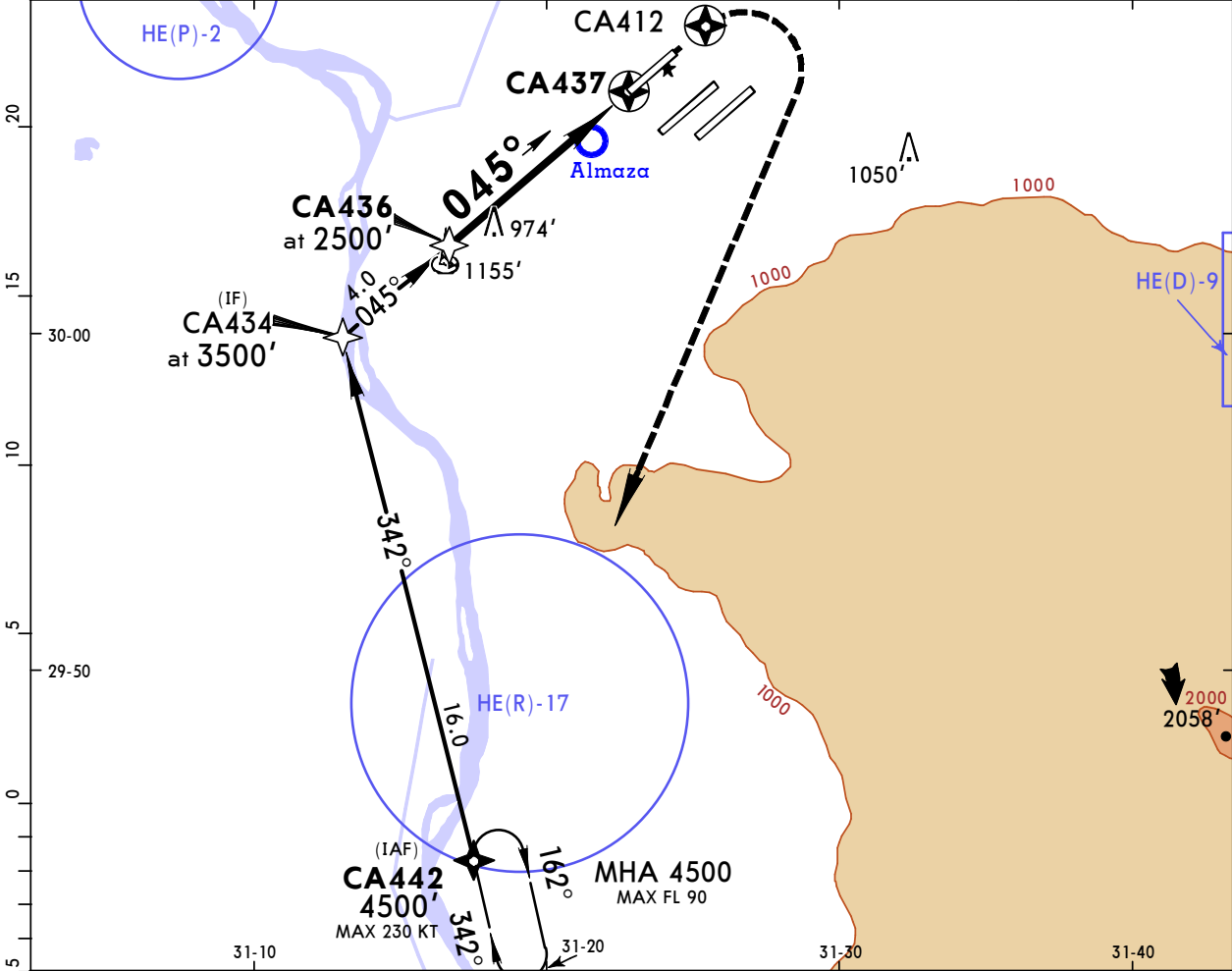
CHANGES: Minimums.

HECA/CAI CAIRO INTL

JEPPESSEN
16 DEC 16 (12-1)

CAIRO, EGYPT RNP Rwy 05L

BRIEFING STRIP™	D-ATIS 122.6	CAIRO Approach (R) 119.050	CAIRO Tower 118.1	South 120.4	Ground 121.9	
	RNAV	Final Apch Crs 045°	Mandatory Alt CA436 2500' (2310')	LNAV MDA(H) 760' (570')	Apt Elev 467' Rwy 190'	
MISSED APCH: Climb STRAIGHT AHEAD to cross CA412, then turn RIGHT to reach CA442 at 4500' and hold or as directed.						
Alt Set: hPa		Rwy Elev: 7 hPa	Trans level: FL 60		Trans alt: 4500'	



Gnd speed-Kts	70	90	100	120	140	160		CA412 ↑
Descent Angle 3.04°	376	484	538	645	753	861		
MAP at CA437								

STRAIGHT-IN LANDING RWY 05L
LNAV
MDA(H) **760' (570')**
ALS out

PANS OPS
A
B
C
D

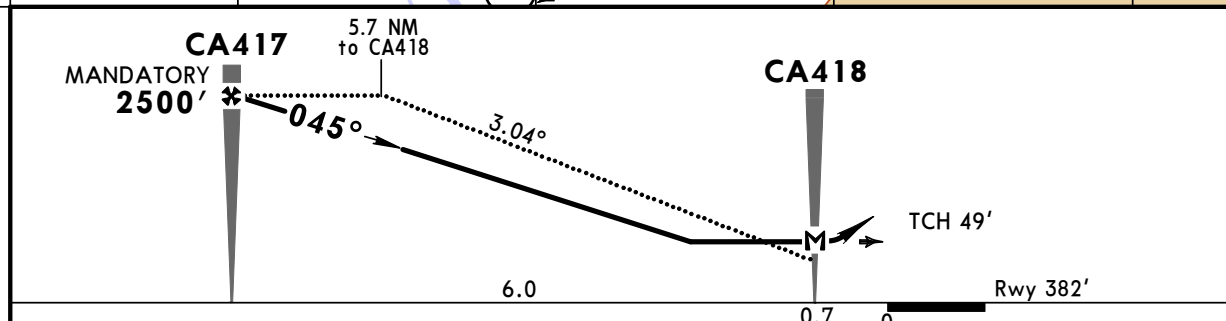
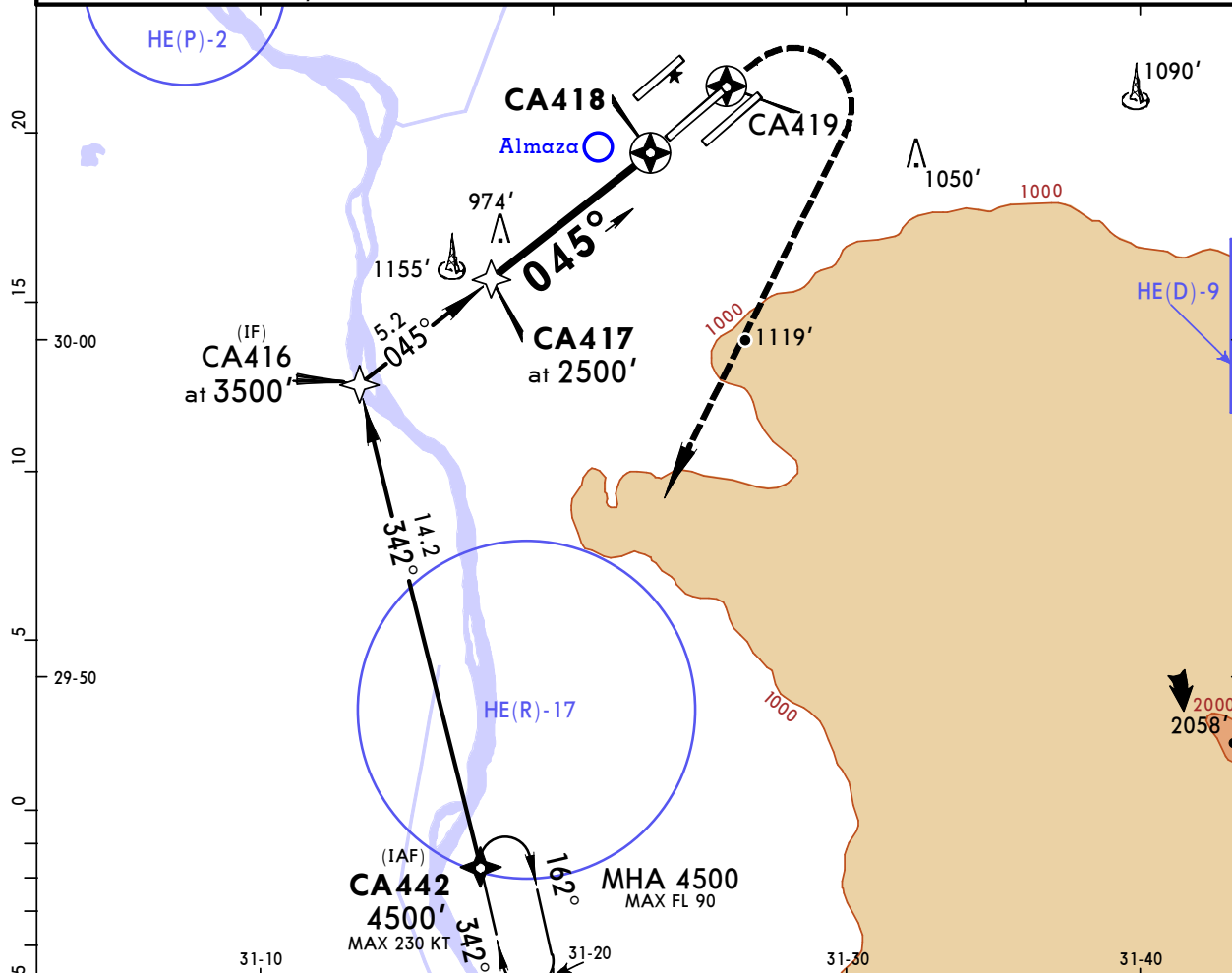
1900m

HECA/CAI CAIRO INTL

JEPPESEN
16 DEC 16 **(12-2)**

CAIRO, EGYPT RNP Rwy 05C

BRIEFING STRIP™	D-ATIS 122.6	CAIRO Approach (R) 119.050	CAIRO Tower 118.1	South 120.4	Ground 121.9	
	RNAV	Final Apch Crs 045°	Mandatory Alt CA417 2500' (2118')	LNAV MDA(H) 710' (328')	Apt Elev 467' Rwy 382'	
	MISSED APCH: Climb STRAIGHT AHEAD to cross CA419, then turn RIGHT to reach CA442 at 4500' and hold or as directed.					
Alt Set: hPa		Rwy Elev: 14 hPa	Trans level: FL 60	Trans alt: 4500'		MSA ARP



Gnd speed-Kts	70	90	100	120	140	160		
Descent Angle	3.04°	376	484	538	645	753		861
MAP at CA418								

STRAIGHT-IN LANDING RWY 05C
LNAV
MDA(H) **710' (328')**
ALS out

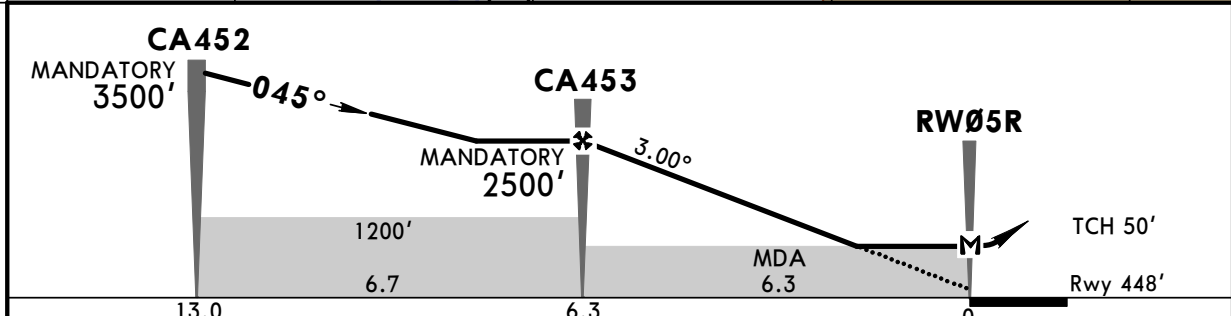
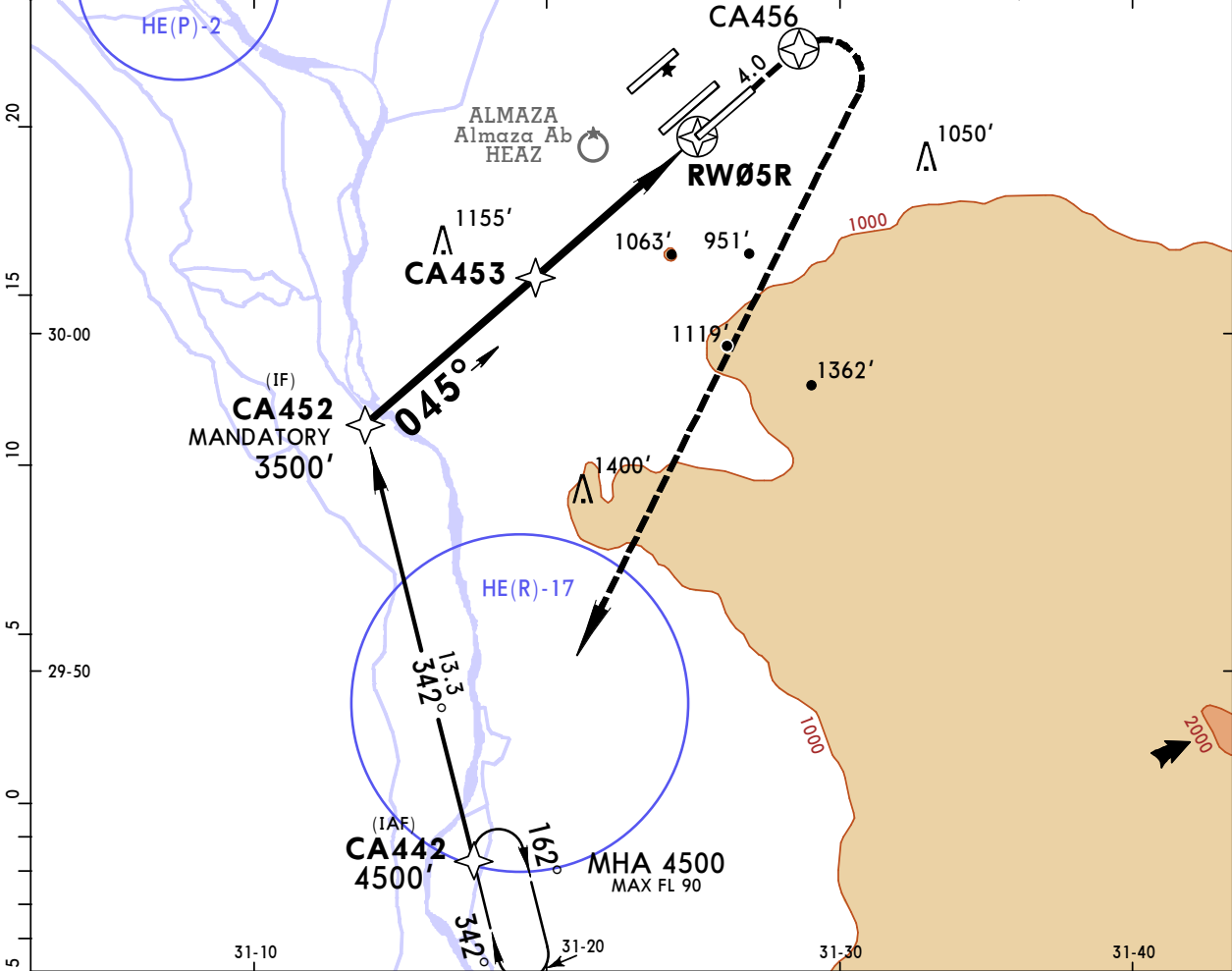
PANS OPS	A		
	B	1000m	RVR 1500m VIS 1600m
	C		
	D	1200m	

HECA/CAI CAIRO INTL

JEPPESEN
6 SEP 19 **12-3** Eff 12 Sep

CAIRO, EGYPT RNP Rwy 05R

BRIEFING STRIP™	D-ATIS 122.6	CAIRO Approach (R) 119.050	CAIRO Tower 118.1	South Ground 120.4	North 121.9	
	RNAV	Final Apch Crs 045°	Mandatory Alt CA453 2500' (2052')	LNAV MDA(H) 820' (372')	Apt Elev 467' Rwy 448'	
	MISSED APCH: Climb STRAIGHT AHEAD to cross CA456, then turn RIGHT to reach CA442 at 4500' and hold or as directed.					
Alt Set: hPa		Rwy Elev: 16 hPa	Trans level: FL 60	Trans alt: 4500'		
MSA ARP						



Gnd speed-Kts	70	90	100	120	140	160		CA456 ↑
Descent Angle 3.00°	372	478	531	637	743	849		
MAP at RW05R								

STRAIGHT-IN LANDING RWY 05R
LNAV
 MDA(H) **820'** (372')

PANS OPS	A		ALS out
	B	1000m	RVR 1500m VIS 1600m
	C		
	D	RVR 1500m VIS 1600m	2000m

CHANGES: Minimums.

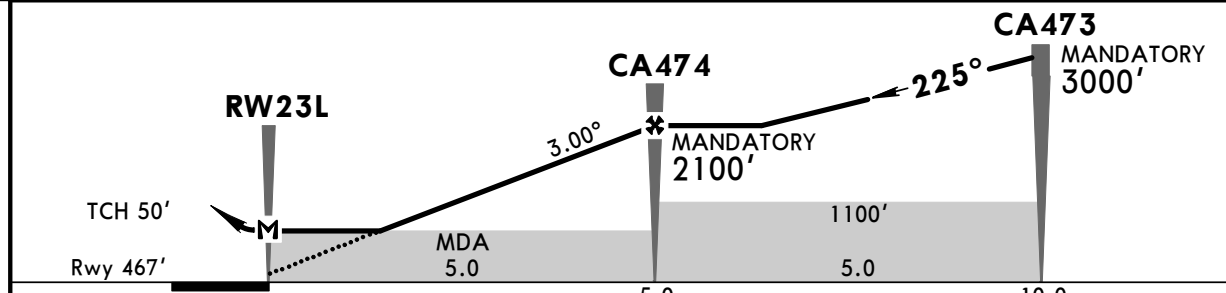
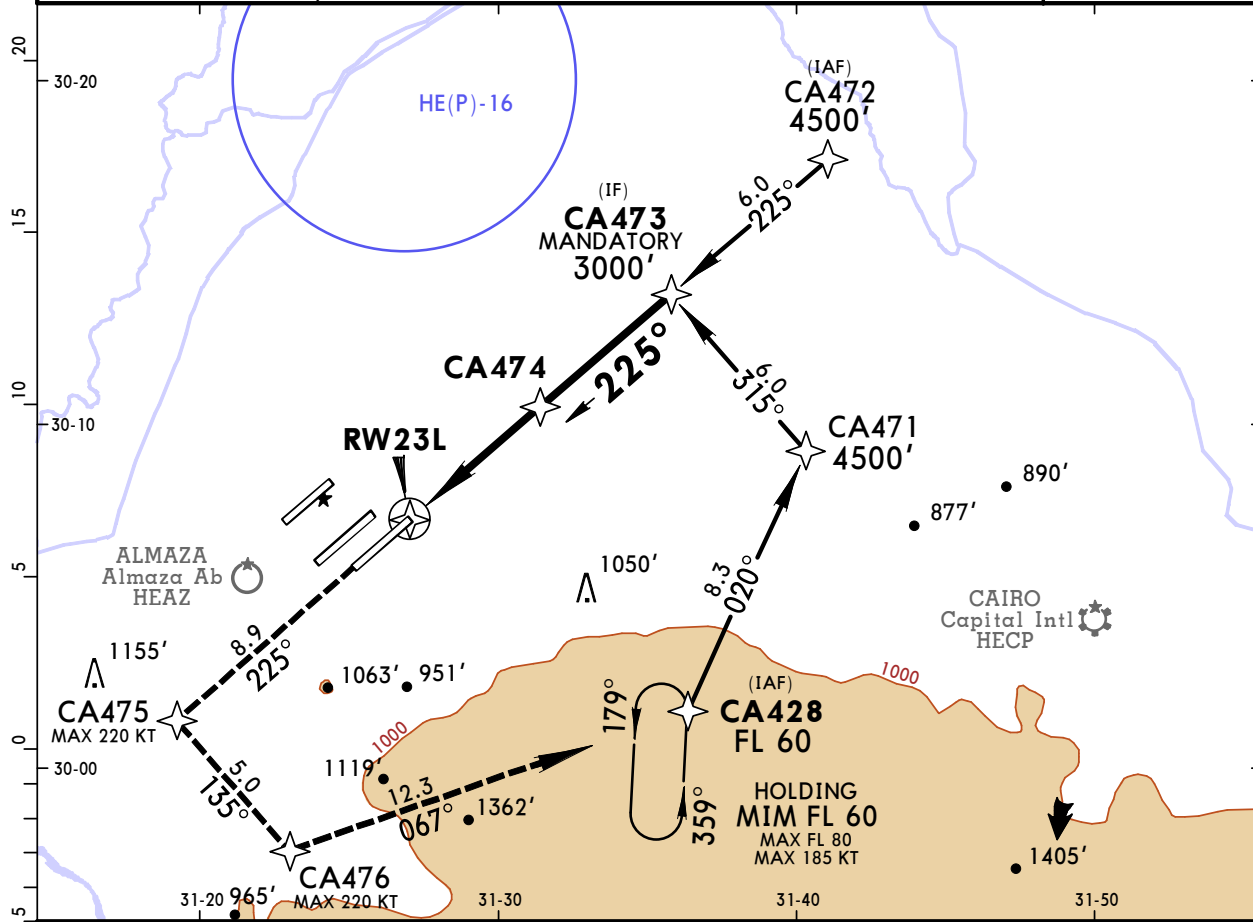
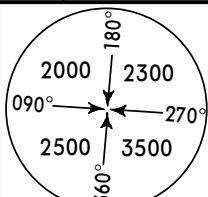
HECA/CAI CAIRO INTL



6 SEP 19 **(12-4)** Eff 12 Sep

CAIRO, EGYPT RNP Rwy 23L

BRIEFING STRIP™	D-ATIS	CAIRO Approach (R)		CAIRO Tower	Ground	
	122.6	119.050		118.1	South 120.4	North 121.9
RNAV	Final Apch Crs 225°	Mandatory Alt CA474 2100' (1633')	LNAV MDA(H) 830' (363')	Apt Elev 467' Rwy 467'		
MISSED APCH: Climb STRAIGHT AHEAD to CA475, then turn LEFT to CA476, then turn LEFT to CA428 at FL 60 and hold or as directed.						
Alt Set: hPa		Rwy Elev: 17 hPa	Trans level: FL 60		Trans alt: 4500'	
						MSA ARP



Gnd speed-Kts	70	90	100	120	140	160	HIALS-II PAPI PAPI PAPI	CA475 ↑
Descent Angle 3.00°	372	478	531	637	743	849		
MAP at RW23L								

STRAIGHT-IN LANDING RWY 23L	
LNAV	
MDA(H) 830' (363')	
ALS out	
A	
B	1000m
C	RVR 1500m VIS 1600m
D	RVR 1500m VIS 1600m

PANS OPS

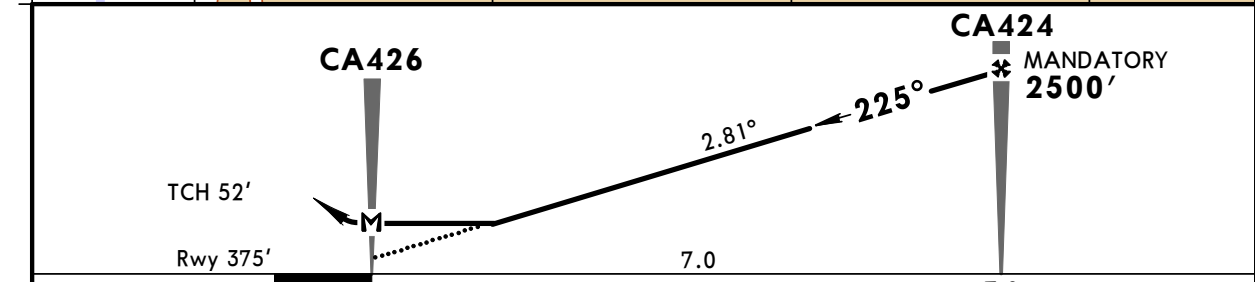
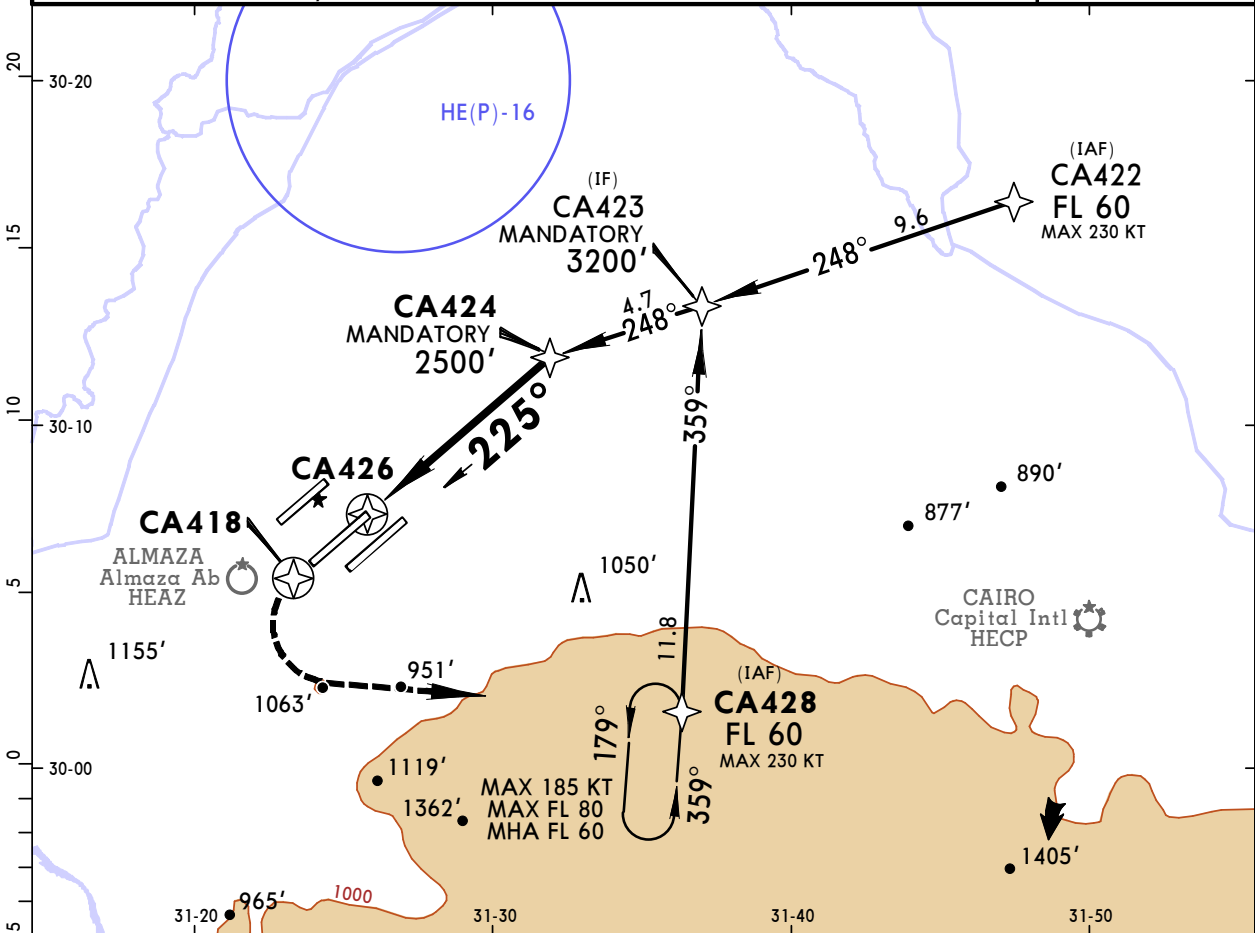
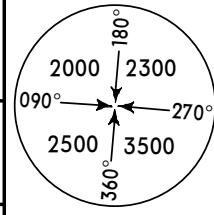
CHANGES: Minimums.

HECA/CAI CAIRO INTL

JEPPESEN
6 SEP 19 **(12-5) Eff 12 Sep**

CAIRO, EGYPT RNP Rwy 23C

BRIEFING STRIP™	D-ATIS	CAIRO Approach (R)		CAIRO Tower	South	Ground	North
	122.6	119.050		118.1	120.4		121.9
	RNAV	Final Apch Crs 225°	Mandatory Alt CA424 2500' (2125')	LNAV MDA(H) 810' (435')	Apt Elev 467'	Rwy 375'	
MISSED APCH: Climb STRAIGHT AHEAD to cross CA418, then turn LEFT to reach CA428 at FL 60 and hold or as directed.							
Alt Set: hPa		Rwy Elev: 14 hPa	Trans level: FL 60		Trans alt: 4500'		MSA ARP



MAP at CA426							HTALS-II PAPI PAPI	CA418 ↑
--------------	--	--	--	--	--	--	-----------------------	-------------------

STRAIGHT-IN LANDING RWY 23C
LNAV
 MDA(H) **810' (435')**
 ALS out

PANS OPS	A	1600m
	B	
	C	
	D	

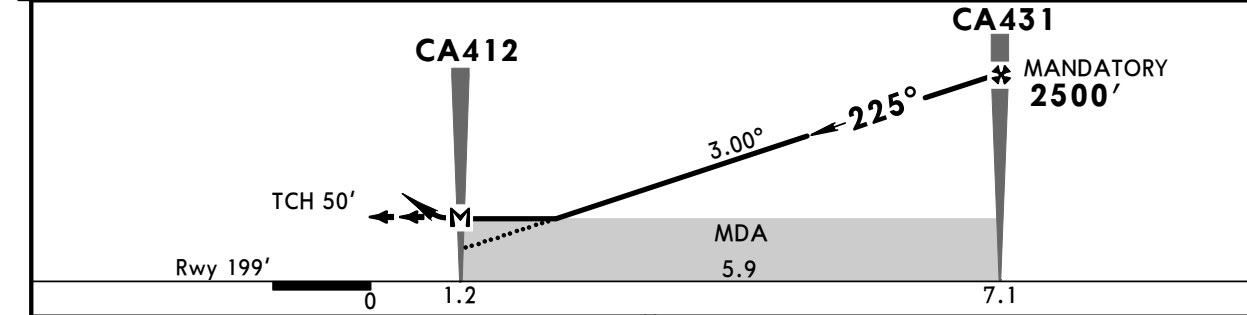
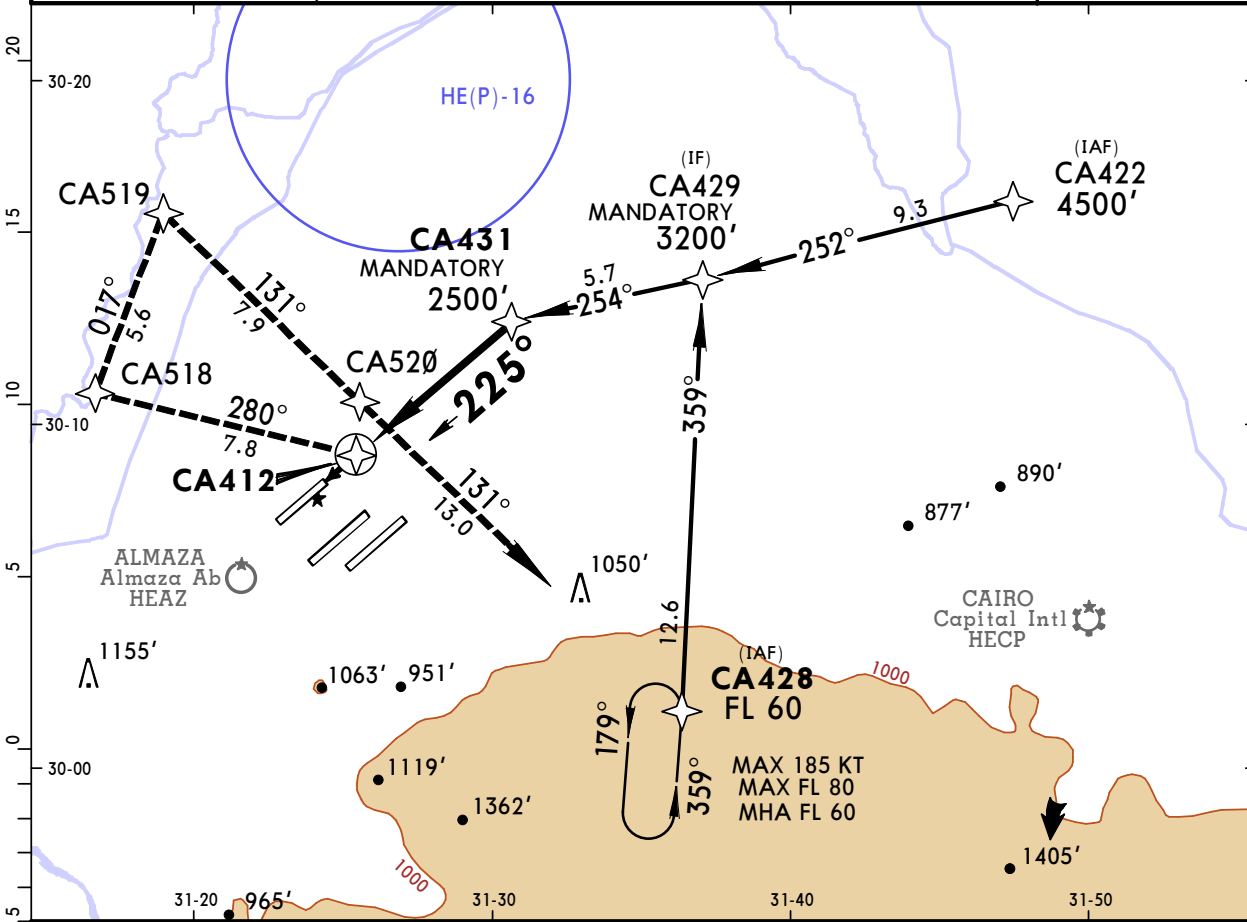
HECA/CAI CAIRO INTL



6 SEP 19 **12-6** Eff 12 Sep

CAIRO, EGYPT RNP Rwy 23R

BRIEFING STRIP™	D-ATIS	CAIRO Approach (R)		CAIRO Tower	Ground	
	122.6	119.050		118.1	South 120.4	North 121.9
	RNAV	Final Apch Crs 225°	Mandatory Alt CA431 2500' (2301')	LNAV MDA(H) 830' (631')	Apt Elev 467' Rwy 199'	
MISSED APCH: Climb immediate RIGHT turn on 280° to CA518 at 2000' or above, then turn RIGHT to CA519 at 2800' or above, then turn RIGHT to CA520 at 4000', then to CA428 at FL 60 and hold or as directed. MAX 185 KT.						
Alt Set: hPa		Rwy Elev: 7 hPa	Trans level: FL 60		Trans alt: 4500'	



Gnd speed-Kts	70	90	100	120	140	160		MAX 185 KT at or above 2000' on 280° RT	CA518
Descent Angle	372	478	531	637	743	849			

MAP at CA412

STRAIGHT-IN LANDING RWY 23R

LNAV
MDA(H) **830'** (631')

ALS out

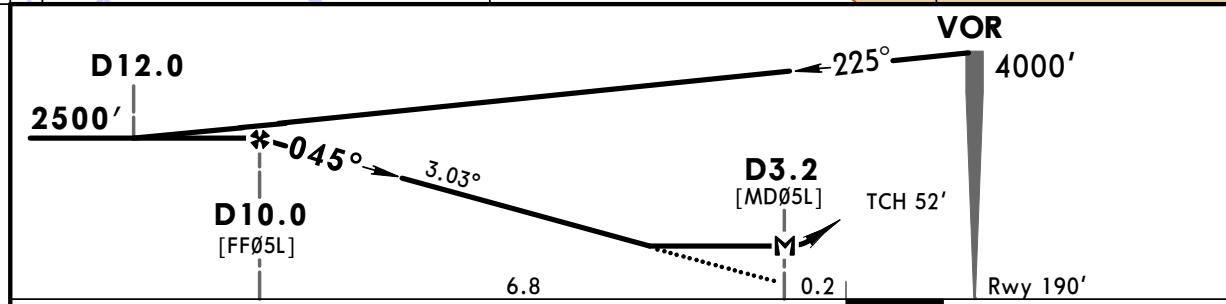
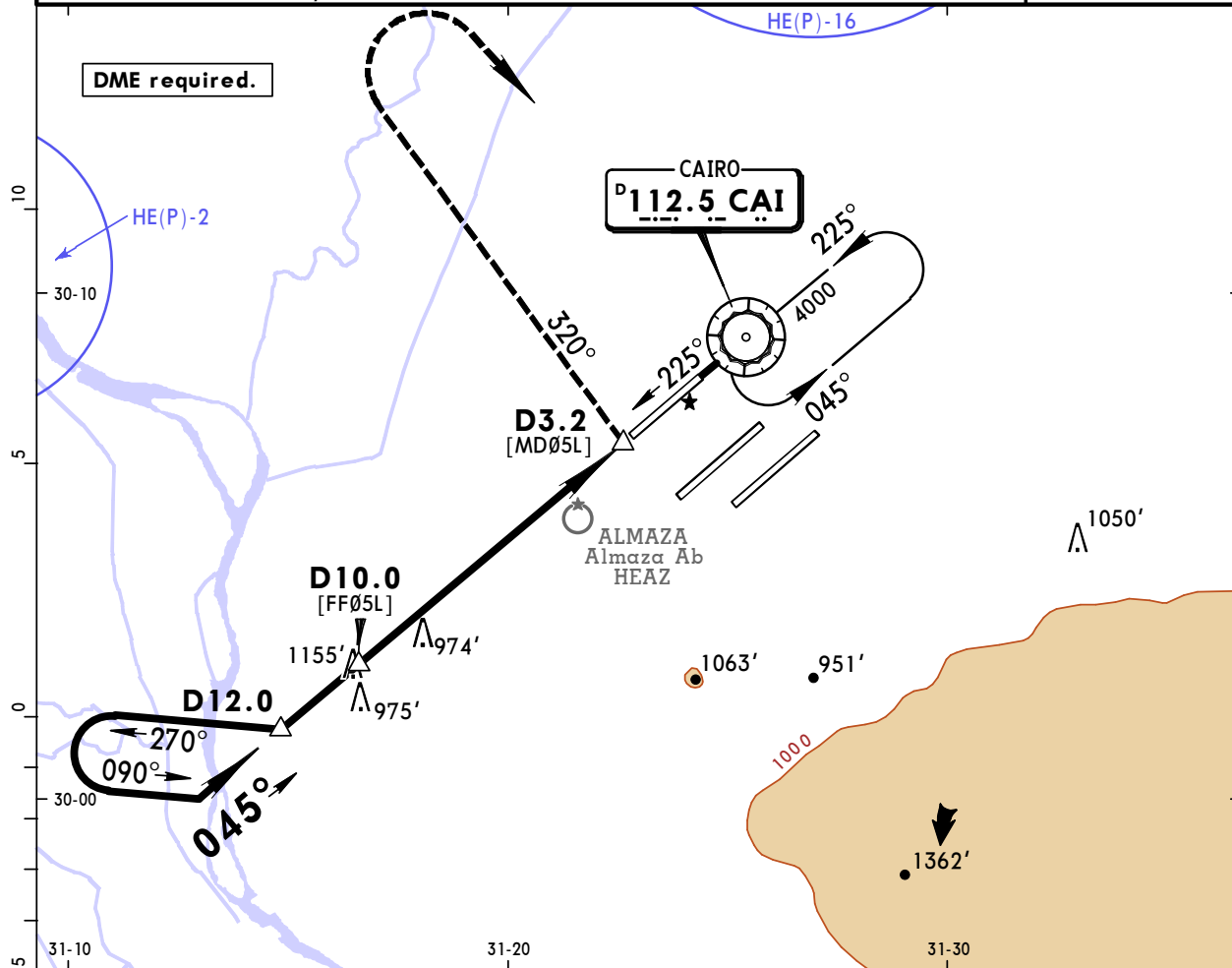
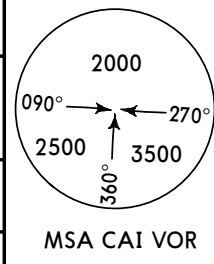
PANS OPS	A	2700m
	B	
	C	
	D	

HECA/CAI CAIRO INTL

JEPPESEN
2 NOV 18 (13-1) Eff 8 Nov

CAIRO, EGYPT VOR Rwy 05L

BRIEFING STRIP™	D-ATIS 122.6	CAIRO Approach (R) 119.050	CAIRO Tower 118.1	South Ground North 120.4 121.9	
	VOR CAI 112.5	Final Apch Crs 045°	Minimum Alt D10.0 2500' (2310')	MDA(H) 760' (570')	Apt Elev 467' Rwy 190'
	MISSED APCH: Immediately turn LEFT onto 320° climbing to 2500', then turn RIGHT to VOR and hold at 4000', or as directed.				
	Alt Set: hPa	Rwy Elev: 7 hPa	Trans level: FL 60	Trans alt: 4500'	



Gnd speed-Kts	70	90	100	120	140	160		2500' ← onto 320° LT
Descent Angle	3.03°	375	482	536	643	750		
MAP at D3.2								

STRAIGHT-IN LANDING RWY 05L

MDA(H) **760'** (570')

ALS out

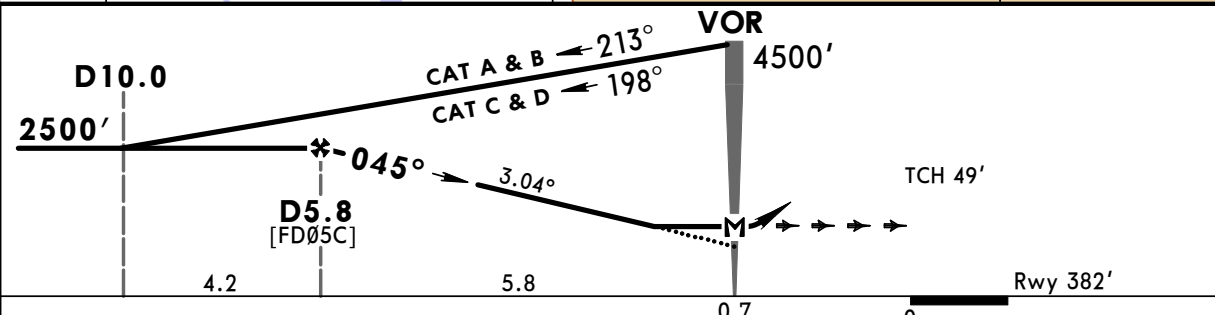
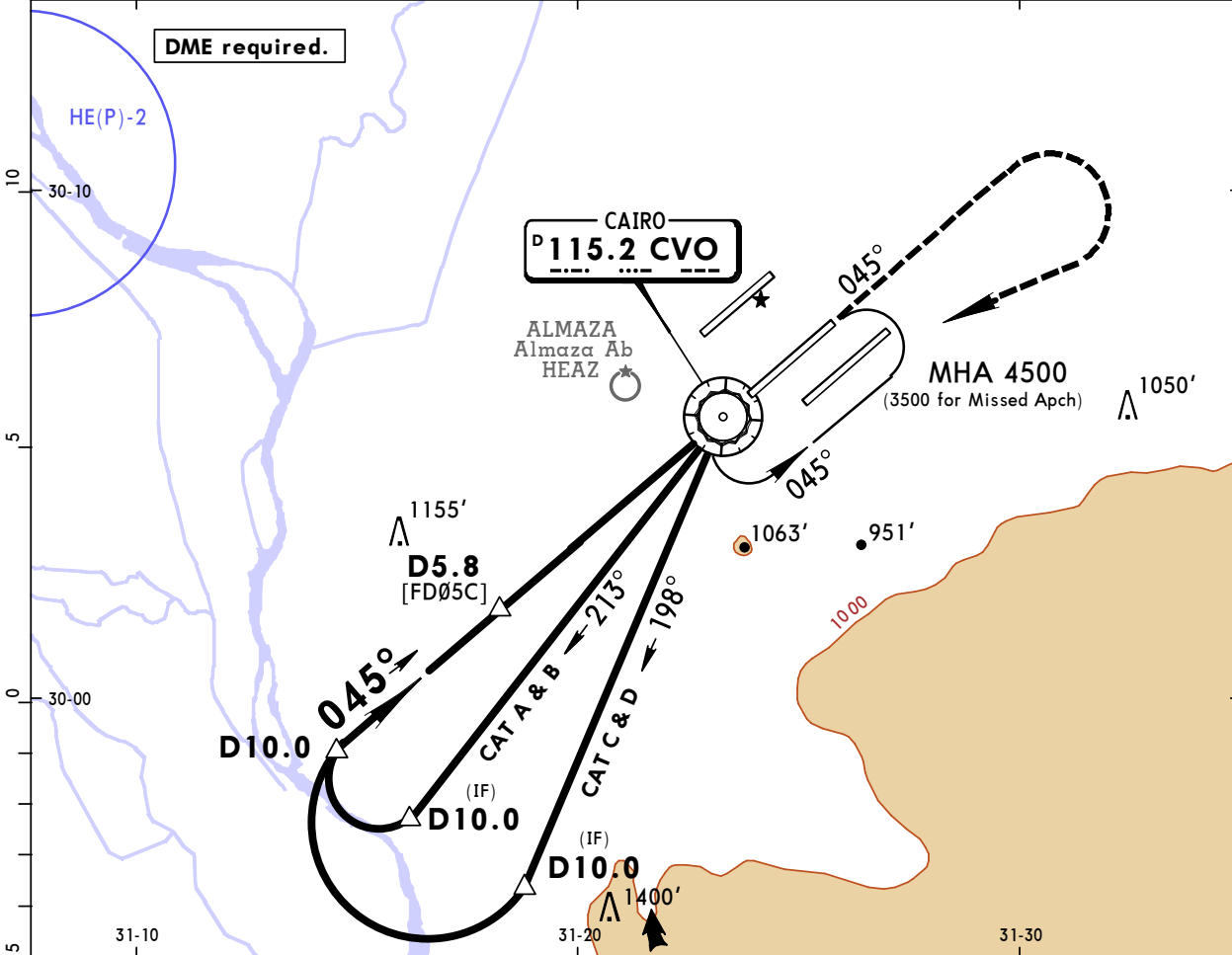
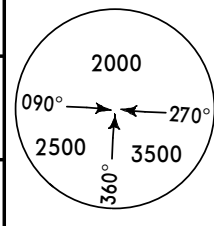
PANS OPS	A	
	B	
	C	1900m
	D	

HECA/CAI CAIRO INTL

JEPPESEN
2 NOV 18 (13-2) Eff 8 Nov

CAIRO, EGYPT VOR Rwy 05C

BRIEFING STRIP™	D-ATIS 122.6	CAIRO Approach (R) 119.050	CAIRO Tower 118.1	South Ground North 120.4 121.9	
	VOR CVO 115.2	Final Apch Crs 045°	Minimum Alt D5.8 2500' (2118')	MDA(H) 710' (328')	Apt Elev 467' Rwy 382'
	MISSED APCH: Climb STRAIGHT AHEAD to 2000', then turn RIGHT climbing to reach VOR at 3500' and hold, or as directed.				
	Alt Set: hPa	Rwy Elev: 14 hPa	Trans level: FL 60	Trans alt: 4500'	MSA CVO VOR



Gnd speed-Kts	70	90	100	120	140	160	HIALS-II PAPI PAPI
Descent Angle 3.04°	376	484	538	645	753	861	
MAP at VOR							

STRAIGHT-IN LANDING RWY 05C	
MDA(H) 710' (328')	
ALS out	
A	
B	1000m
C	
D	1200m
RVR 1500m VIS 1600m	

PANS OPS

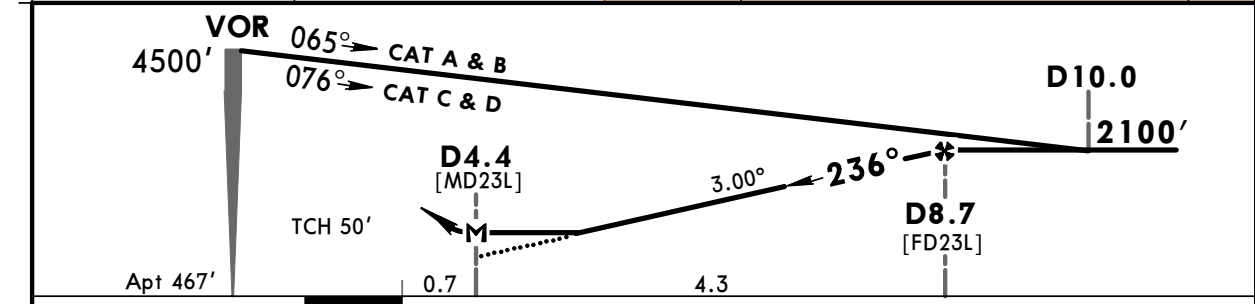
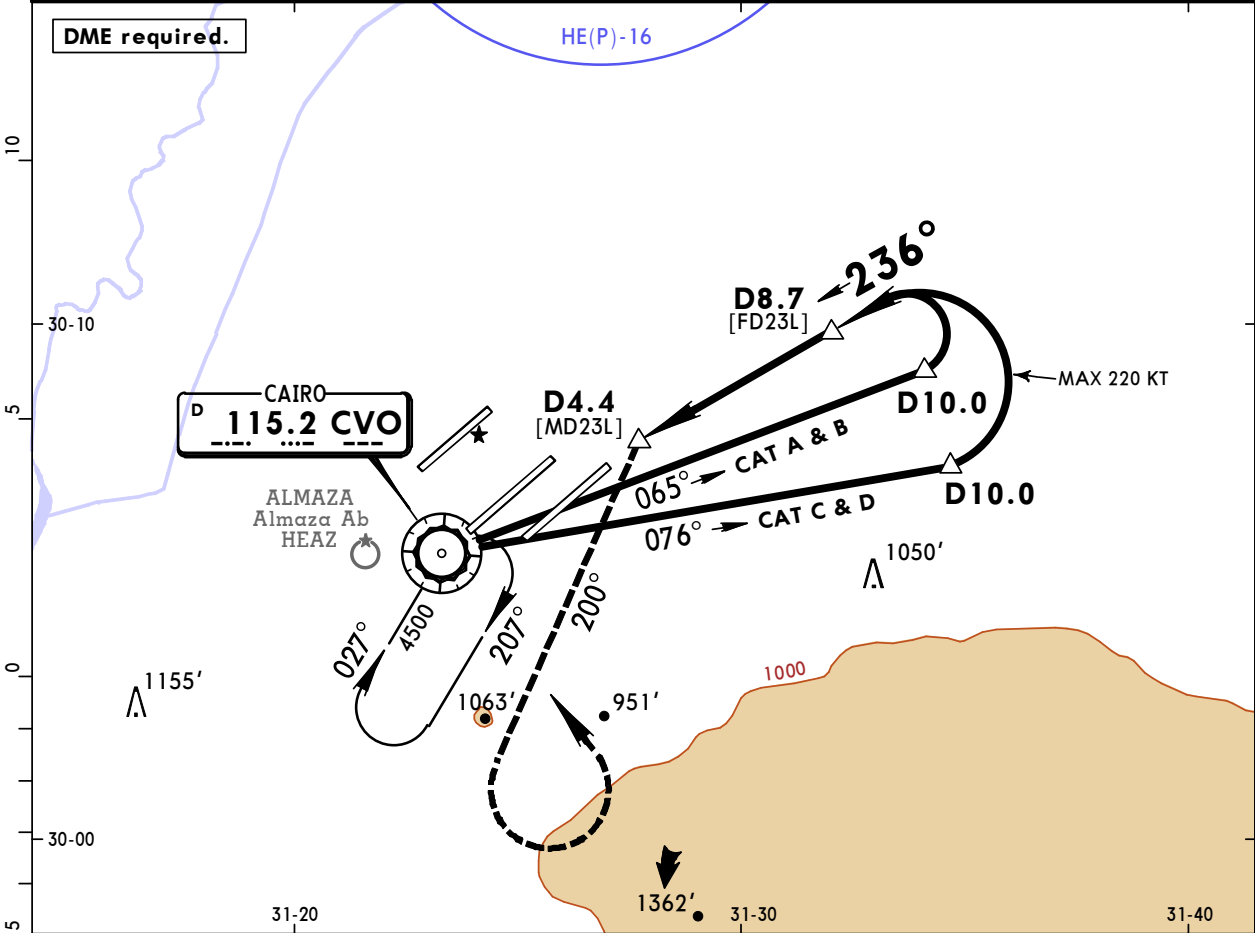
CHANGES: None.

HECA/CAI CAIRO INTL

JEPESEN
6 SEP 19 **(13-3)** Eff 12 Sep

CAIRO, EGYPT VOR Rwy 23L

BRIEFING STRIP™	D-ATIS 122.6	CAIRO Approach (R) 119.050	CAIRO Tower 118.1	South 120.4	Ground 121.9		
	VOR CVO 115.2	Final Apch Crs 236°	Minimum Alt D8.7 2100' (1633')	MDA(H) 970' (503')	Apt Elev 467'		
	MISSED APCH: Immediately turn LEFT onto 200° climbing at or above 2000', then turn LEFT to reach VOR at 4500' and hold, or as directed.						
	Alt Set: hPa		Apt Elev: 17 hPa		Trans level: FL 60		Trans alt: 4500'



Gnd speed-Kts	70	90	100	120	140	160	HIALS-II PAPI PAPI At or above 2000' onto 200° LT
Descent Angle	3.00°	372	478	531	637	743	
MAP at D4.4							

STRAIGHT-IN LANDING RWY 23L

MDA(H) **970'** (503')

ALS out

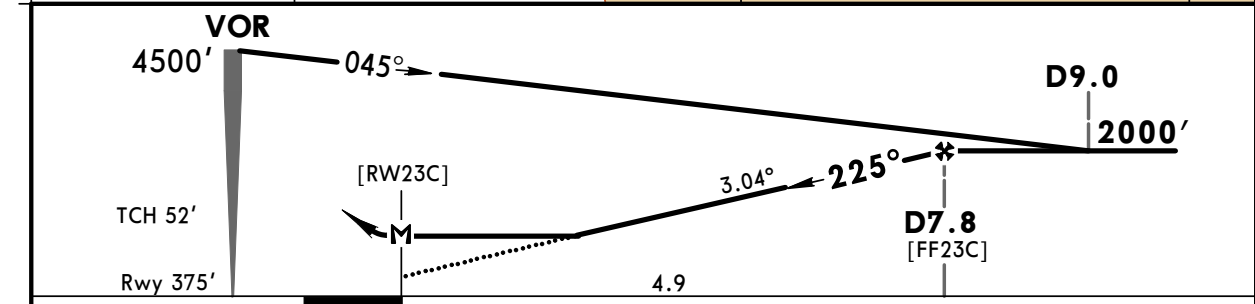
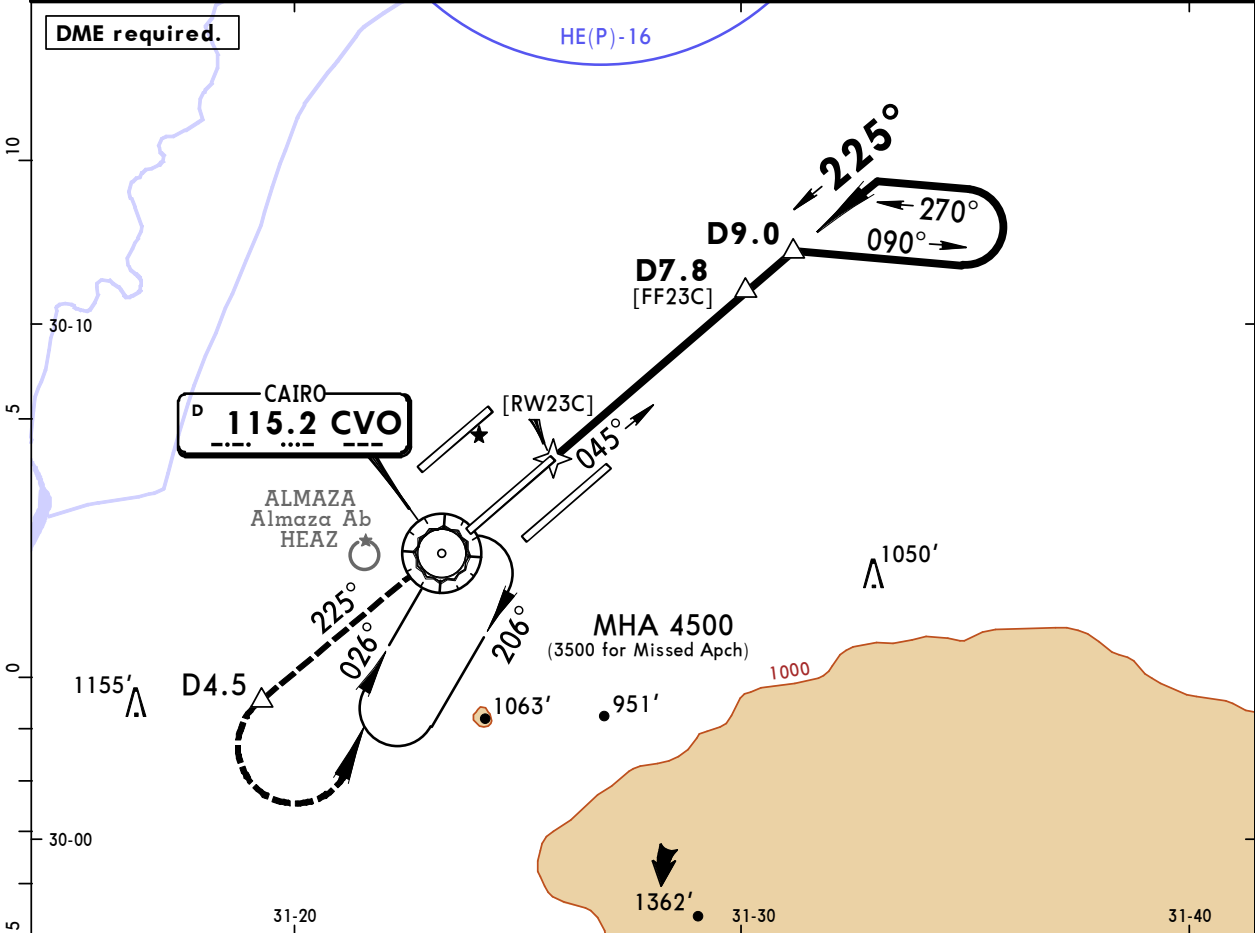
PANS OPS	A	1600m
	B	
	C	
	D	

HECA/CAI CAIRO INTL

JEPPESEN
6 SEP 19 **13-4** Eff 12 Sep

CAIRO, EGYPT VOR Rwy 23C

BRIEFING STRIP™	D-ATIS 122.6	CAIRO Approach (R) 119.050	CAIRO Tower 118.1	South 120.4	Ground 121.9		
	VOR CVO 115.2	Final Apch Crs 225°	Minimum Alt D7.8 2000' (1625')	MDA(H) 760' (385')	Apt Elev 467' Rwy 375'		
	MISSED APCH: Climb STRAIGHT AHEAD on 225° to 2500'. Not later than D4.5 turn LEFT to reach VOR at 3500' and hold, or as directed.						
Alt Set: hPa		Rwy Elev: 14 hPa	Trans level: FL 60		Trans alt: 4500'		



Gnd speed-Kts	70	90	100	120	140	160		
Descent Angle	3.04°	376	484	538	645	753		861
D7.8 to MAP	4.9	4:12	3:16	2:56	2:27	2:06		1:50

STRAIGHT-IN LANDING RWY 23C	
MDA(H) 760' (385')	
ALS out	
A	
B	1400m
C	RVR 1500m VIS 1600m
D	RVR 1500m VIS 1600m

HECA/CAI CAIRO INTL

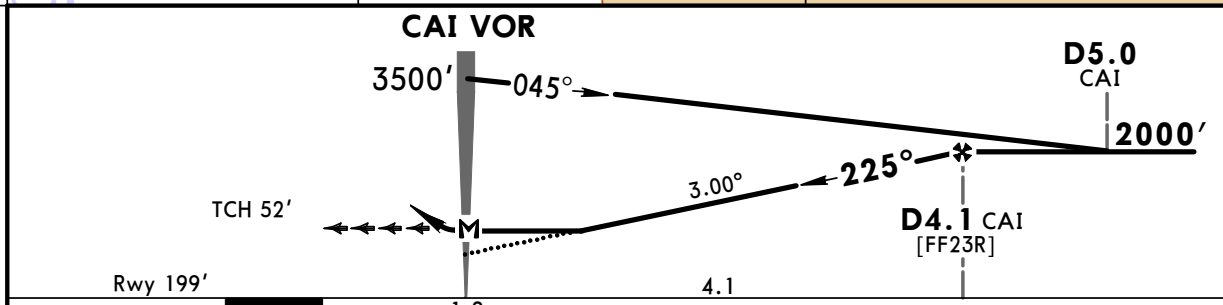
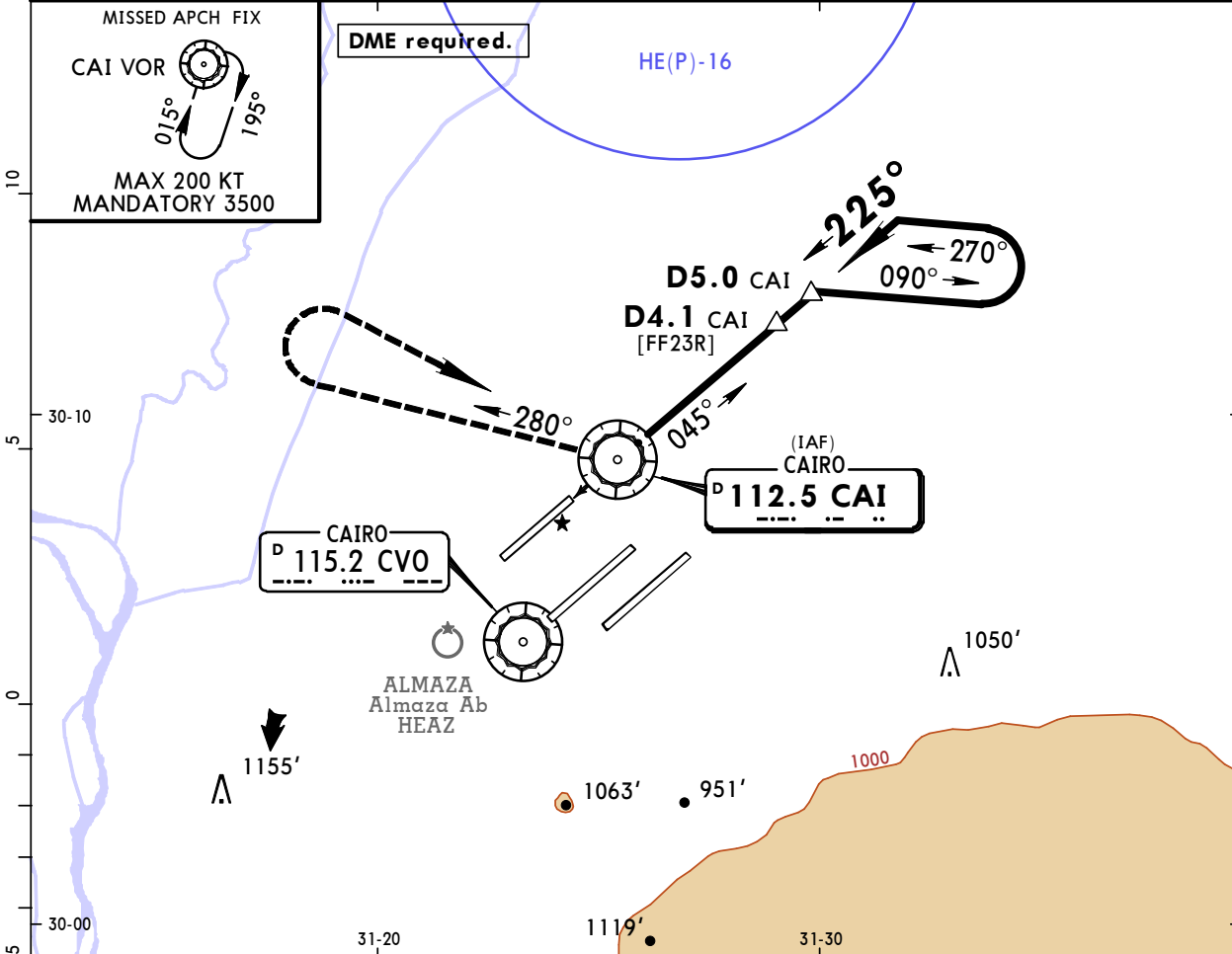
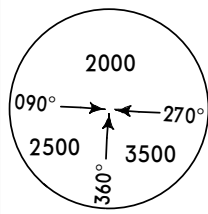


6 SEP 19 (13-5) Eff 12 Sep

CAIRO, EGYPT VOR Rwy 23R

BRIEFING STRIP™

D-ATIS 122.6	CAIRO Approach (R) 119.050	CAIRO Tower 118.1	South 120.4	Ground 121.9	North
VOR CAI 112.5	Final Apch Crs 225°	Minimum Alt D4.1 CAI 2000' (1801')	MDA(H) 780' (581')	Apt Elev 467' Rwy 199'	
<p>MISSED APCH: Immediate RIGHT turn onto track 280° climbing to 2000', then turn RIGHT to reach CAI VOR at 3500' and hold, or as directed. MAX 220 KT.</p>					
Alt Set: hPa		Rwy Elev: 7 hPa		Trans level: FL 60	
				Trans alt: 4500'	



Gnd speed-Kts	70	90	100	120	140	160	HIALS 	MAX 220 KT	2000' on 280°
Descent Angle	3.00°	372	478	531	637	743			
MAP at CAI VOR									

STRAIGHT-IN LANDING RWY 23R

MDA(H) **780'** (581')

ALS out

PANS OPS

A	
B	
C	2500m
D	