



How to Paint
BRICKSTONE

COLOR CHART

AK 3rd No. 1A Very Dark Brown

AK 3rd Mahogany Brown

AK 3rd Deep Brown

AK 3rd Light Brown

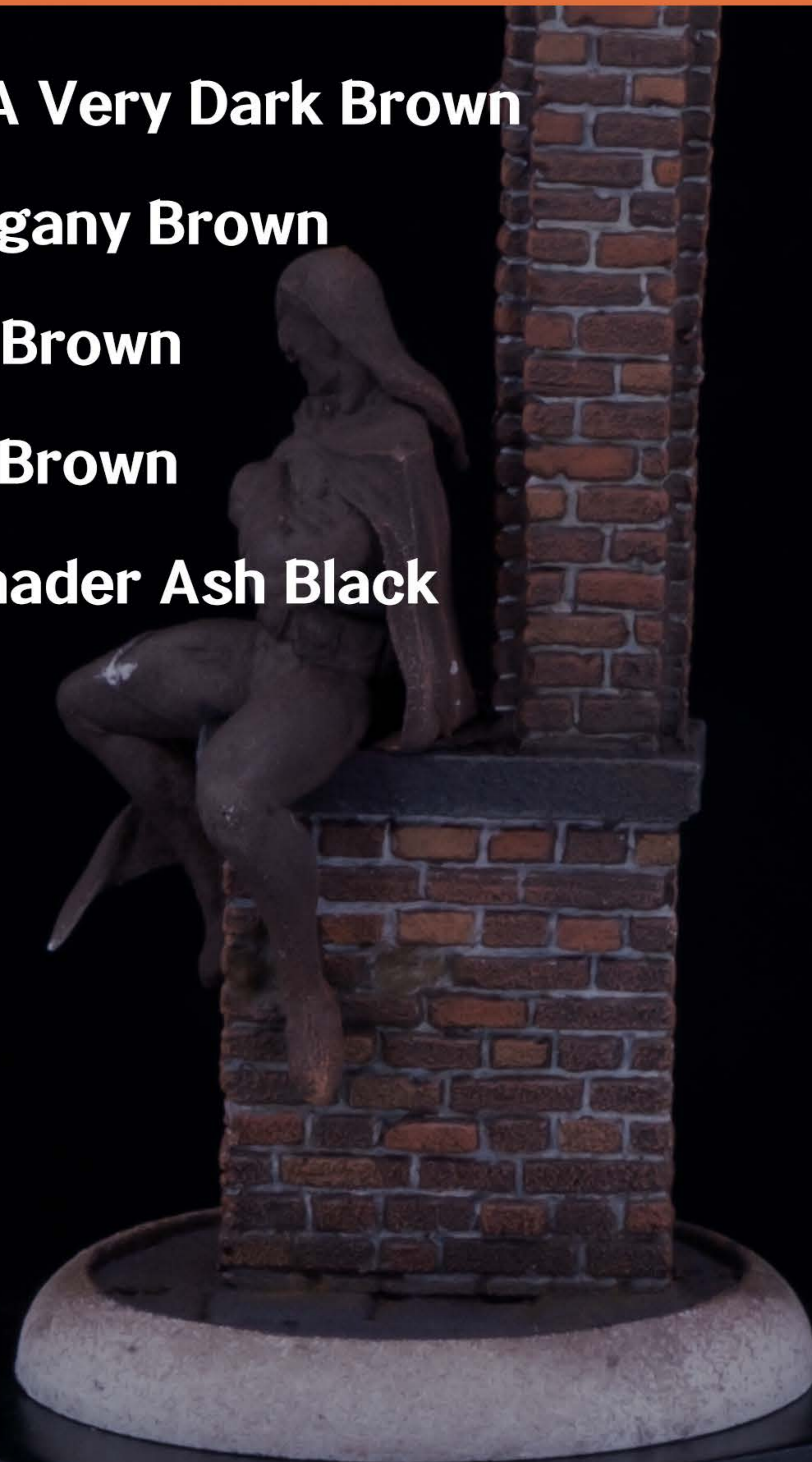
Ammo Mig Shader Ash Black

AK 3rd Warm Grey

AK 3rd Tenebrous Grey

AK 3rd Ash Grey

Scale75 Soilwork Dark Earth



PREPRATION



Today, we will learn how to paint old brick.

First, prime the entire model to the any color you want. I used white, but it doesn't matter which color it is. However, the darker priming make darker tone afterward, so priming it according to your taste.

Then use a dark brown paint to paint the whole brick. I used AK 3rd S.C.C. No. 1A Very Dark Brown.



PAINTING

Use AK 3rd Mahogany Brown to drybrush the whole brick. If it's light brown, it doesn't matter if you use a different paint.

Then paint some bricks in brighter colors. At this time, you can use a normal method instead of a drybrush. I used AK 3rd Deep Brown and AK 3rd Light Brown.



PAINTING

Now wash the whole brick for darker tone. I used Ammo Mig Shader Ash Black, but you can use any paint if that is dark tone. Paint such as Citadel Contrast Wyrddwood or Shade Agrax Earthshade are also fine.

What's important is to wash the overall color until it's properly darkened. When you wash, it's better to wash it thinly several times rather than darkening it at once.

PAINTING



Now it's time to express the mortar between the bricks. This process is not necessary, so you can skip it if you like it better without mortar.

Use AK 3rd Warm Grey to draw a thin line between the bricks. If the gap between the bricks is deep and clear, it can be expressed just by diluting the paint and spilling it several times. But if the gap is big and wide like this model, actual painting is much more effective.

I used the AK 3rd Tenbrous Grey to mark the edges of the bricks and paint the black stone. Additionally, I used AK 3rd Ash Grey to dry-brush the black stone.



DETAIL

Add some pigments to add an old feeling. I applied Scale75 Soilwork Dark Earth with drybrush technique. At this time, it's better to applied only deep or bottom than entire model.

If you like the previous one better, you can skip this process.

DETAIL

Now, wash the pigments and the paint again to match the color and give the mortar an old feeling. I used diluted Ammo Mig Shader Ash Black like before.

This simple brick was completed!

Thank you always.

