


# Forgotten Wish

by abimboleb

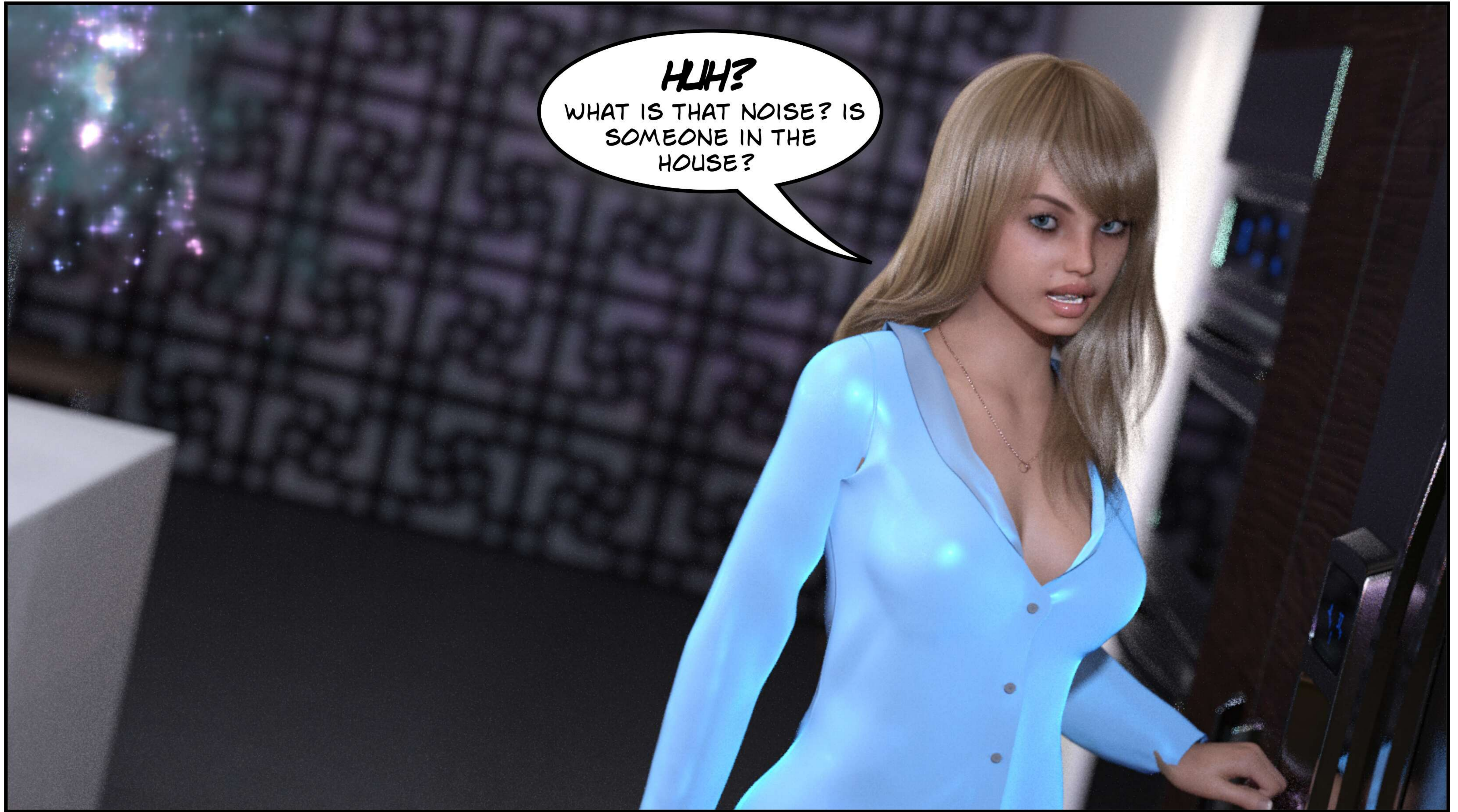


AHH... WHAT A DAY!  
AFTER ALL THOSE  
MEETINGS AND I STILL  
CAN'T SLEEP! I JUST NEED  
SOMETHING TO FEEL  
BETTER.



TOMORROW IS  
GONNA BE ANOTHER  
TOUGH DAY! I NEED TO GET  
READY TO MAKE SURE  
EVERYTHING GOES AS  
PLANNED!


I CAN'T LET THIS  
DEAL GONE TO WASTE! I  
NEED TO BE READY! SOME  
MILK MIGHT HELP.



**HLH?**  
WHAT IS THAT NOISE? IS  
SOMEONE IN THE  
HOUSE?




WHAT HAPPENED WITH THE  
ALARM...?! WHAT THE HELL?!  
W-WHAT IS THAT?! WHO?!  
**SOMEONE!**



DON'T FEAR ME, MY  
CHILD... I MEAN NO HARM  
TO YOU! ME FROM SKY, FROM  
ANOTHER WORLD.. IF THAT  
HELPS...

WHAT THE...  
Y-YOU... YOU'RE  
SPEAKING?! HOW CAN A  
"CLOUD" TALK?!

A woman with long, wavy blonde hair and bangs, wearing a shiny blue top, is shown in a close-up. She has a slightly open mouth as if speaking. The background is dark with some blurred lights. Four speech bubbles are overlaid on the image, containing text.

I'M JUST AS MUCH  
OF A THINKING BEEING LIKE  
YOURSELF, PAMELA! I JUST  
CHOOSE A FORM TO REPRESENT  
MYSELF IN YOUR WORLD.

WAIT... ARE YOU AN  
ALIEN? A GHOST? OR  
WHAT?

THE PURPOSE OF MY  
EXISTENCE  
IS NOT IMPORTANT AND I DON'T  
HAVE TIME TO EXPLAIN IT TO  
YOU... WE ARE ALREADY  
LATE!


LET'S JUST SAY, I'M THAT  
SPIRIT, THAT "GUARDIAN  
ANGEL" YOU HUMANS TALK  
ABOUT... AND I'M HERE TO MAKE  
YOUR WISH COME TRUE!

A woman with long blonde hair, wearing a shiny blue long-sleeved dress, stands in a dark room. She has a confused expression. In the background, there is a bright, multi-colored starburst light effect. Three speech bubbles are overlaid on the image.

WHOOH.. WHOOHH!! MY  
WISH?! WHAT WISH? I  
DON'T REMEMBER THAT I  
WISHED FOR ANYTHING!

WELL NOT NOW...  
WHEN YOU WERE 12!  
REMEMBER? "I WISH TO HAVE  
A RICH AND CARING HUSBAND SO I  
DON'T HAVE TO STUDY IN  
LIKE EVER!!!"

I KNOW I'M IN LATE,  
BUT EVEN FOR US, HIGHER  
BEINGS HAS PROBLEMS WITH...  
REACHING OUT.. BUT NOW HERE  
I'M TO MAKE THIS COME  
TRUE!



**\*GIGGLE\* SO YOU'RE  
HERE TO MAKE MY WISH--  
\*GIGGLE\* COME TRUE WHAT I  
MADE WHEN I WAS 12? YOU  
KNOW I'M 29, RIGHT?**

**I'M AWARE, AS I  
SAID THAT IS WHY WE  
NEED TO HURRY!**

**WELL DON'T BOTHER  
THANK YOU! I'M MOST  
PERFECTLY OKAY WITH MY LIFE  
NOW! I'VE GOT EVERYTHING I  
NEED!**

**I WAS TOO YOUNG, AND  
HAD ENOUGH OF THAT STUPID  
MATH EXAMPLE! BUT NOW I'M A  
GROWN UP I KNOW HOW THING  
SHOULD.....**

**THAT IS  
NOT SOMETHING  
WHAT YOU CAN CHOOSE!  
I'M MAKING IT! IT'S  
MY DUTY!**



OUR JOB AS  
"GUARDIANS" IS TO MAKE  
ALL WISH COME TRUE WHAT  
COMES FROM THE DEEPEST  
REGION OF THE HUMAN  
HEART!

YOU'RE ONE OF  
THOSE SPECIAL  
HUMANS! SO NOW WE'RE  
GOING TO ADJUST  
YOUR LIFE!

"ADJUST"?! WHAT  
DO YOU MEAN BY  
THAT?!

I'M GOING TO  
TURN YOU INTO THE  
ADULT WHO YOU WISHED  
FOR!

WHAT?! NO!!  
YOU CAN'T TAKE  
AWAY WHAT I'VE  
EARNED!




YOU CAN  
FUNALLY BE THAT  
WOMAN WHO YOU REALLY  
ARE! THE ONE WHO WAS  
ALWAYS HIDE INSIDE  
YOU!

NO!! WHAT ARE YOU  
DOING?! MY PANTS!  
GIVE IT BACK!!!

YOU  
NEVER EVER HAD TO  
WORRY ABOUT  
ANYTHING IN  
LIFE!

NO! STOP IT!  
DON'T CHANGE PAM!  
PAM WANNA BE THE  
SAME!





NO  
MORE CONFUSING  
SITUATIONS TO MAKE  
YOUR HEAD HURT...

NO! TURN  
PAMMY BWACK!

NO MORE  
CHALLENGE...

PAMMY'S  
TITTIES ARE  
HWUGE!

NO MORE  
STUDY...

PAMMY'S  
PUSSY WEEL  
COLD!

NO MORE  
STRESS...

DON'T  
MWAKE PWAMMY  
SIMPLE!



JUST A  
LITTLE DOLL FOR  
DADDY!

HE'LL TAKE  
A GOOD CARE OF  
YOU!

B-BUT... *PUSSY*  
DON'T HAVE A DADDY!

*PUSSY*  
IS WIKE, A B WIG  
INDE.. INDEP.. WIKE,  
SMART GIRL!

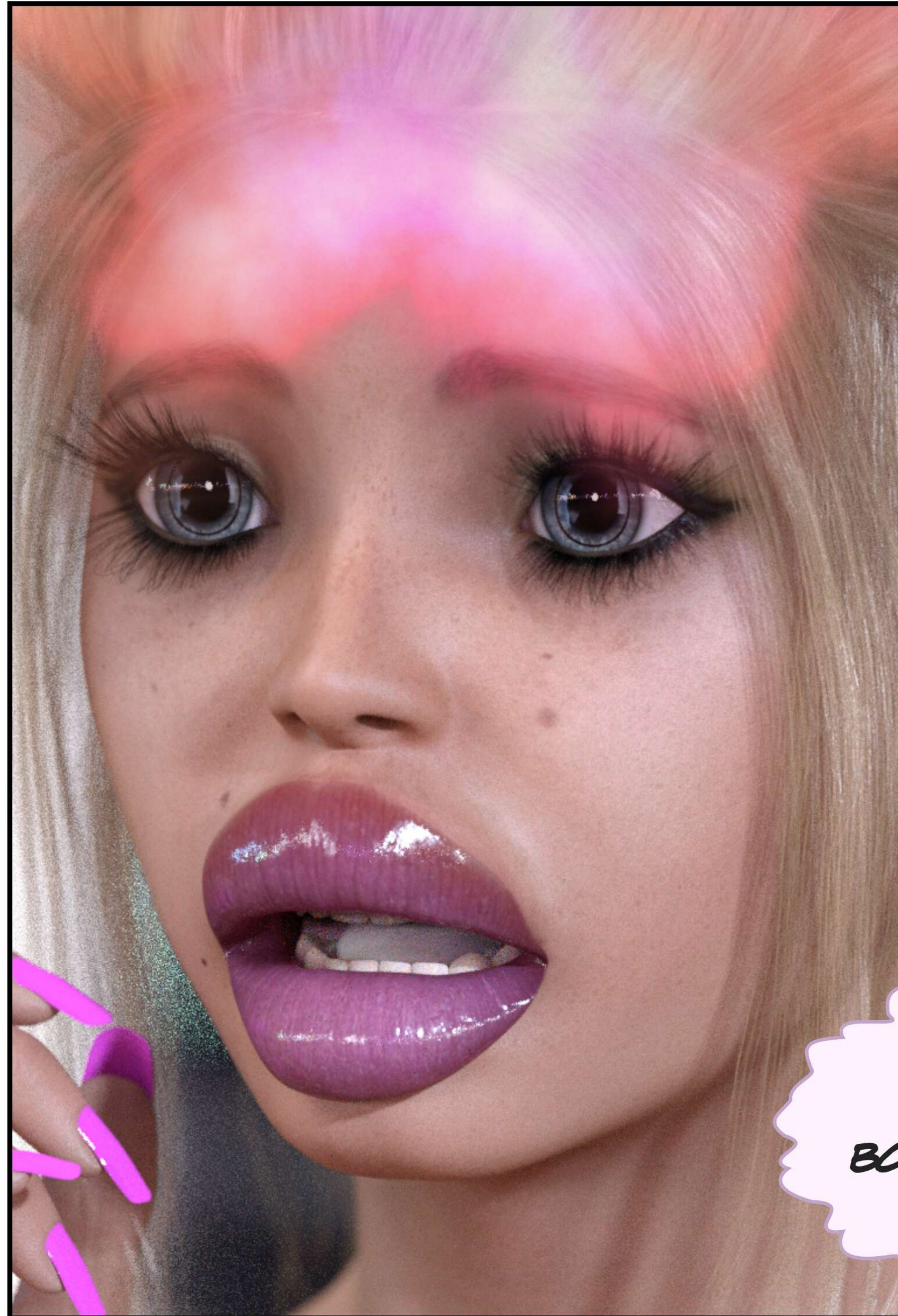


WAIT... WHY DID  
PUSSY CALL HERSELF  
PUSSY?

PUSSYWEEL HER  
HEAD... EMPWTY...

JUST LIKE YOUR  
PERSONALITY, YOUR  
SPEECH ALSO ADJUST FOR  
YOUR NEW LIFE.

AS PINK  
CLOUD WASHES YOUR  
BRAIN, YOUR LAST  
COHERENT THOUGHTS ARE  
LEAVING YOUR LITTLE  
HEAD FOREVER...



**AND PUSSY, THE  
HOUSE-BIMBO IS  
BORN.. WELCOME TO YOUR  
NEW LIFE, PUSSY!**

MWA HEAD...  
P-PUSSY CAN'T  
WEMEMBER... WIKE,  
TOTALLY NOTHING!

IT WILL  
HELP YOU TO LIVE AN  
EASY LIFE FOREVER... NO  
HARD THOUGHTS TO  
CONFUSE PUSSY!



YOU  
STWUPID,  
CLOUD-THINGY! Y-YOU GIVE  
**PLUSSY** BACK HER SMART  
THINGIES BACK TO HER  
HEAD!

I'M AFRAID, I CAN'T  
DO THAT... BUT I CAN  
GIVE YOU SOMETHING  
INSTEAD!

SOMETHING  
WHAT YOU'LL NEED IF  
YOU WANT TO SATISFY  
YOU'R MAN!





A close-up photograph of a woman with blonde hair styled in a high bun, wearing a purple spaghetti-strap top. She has a shocked expression with wide eyes and an open mouth. The background is dark with some bokeh light effects.

HUH?! W-WHAT?!  
W-WHAT DO YOU  
MEAN?!

I'M GONNA GIVE  
YOU A KINK... TO MAKE YOUR  
SEXUAL LIFE - SO BASICALLY  
YOUR EVERY-DAYS -  
INTERESTING.

I'M GONNA GIVE YOU  
AN ANAL-FETISH! SO YOU'RE  
GONNA NEED A **BUTT-PLUG** INTO  
YOUR ASS ALL THE TIME WHEN YOU'R  
DADDY IS NOT AROUND TO  
TREAT YOU!

AND I MEAN..  
**ALL THE TIME!**

**POP!**





A woman with blonde hair in a high bun, wearing a purple, low-cut, sequined dress, stands in a dark room with a window showing a city at night. She has a surprised or pleading expression. A large, pink, cloud-shaped speech bubble is positioned above her head. The background features a window with a view of a city skyline at night, illuminated with various colored lights (green, blue, purple).

WELL, MY JOB HERE IS  
DONE! ENJOY YOUR  
WISH!

A large, white, jagged speech bubble is positioned below the woman, containing text. The background of the entire scene is a dark room with a window showing a city at night.

NOOO!! DON'T  
LEAVE PUSSY LIKE  
THIS! PWEASE!

A 3D-rendered scene featuring two characters. In the foreground, a woman with blonde hair styled in a high bun, wearing a purple, low-cut, form-fitting dress, is looking towards the left. She has bright pink lipstick and is holding a cigarette in her right hand. In the background, a shirtless man with short blonde hair is standing, looking towards the woman. The background is dark with some purple lighting. Two speech bubbles are overlaid on the scene. One is green and pointed towards the man, the other is grey and pointed towards the woman.

IT'S GWONE!  
IT'S WEALLY  
GWONE...

PUSSY? WHAT  
ARE YOU DOING  
HERE? WHY AREN'T  
YOU IN BED?

YOU CAN'T SLEEP AGAIN? WHAT HAPPENED? DID YOU'RE FAVORITE TV-SHOW HAD A BAD EPISODE?

D-DADDY?!




IT'S OKAY! I JUST MISSED YOU! NOW WHY DON'T WE MAKE SOMETHING FUNNY, MAYBE THAT HELPS YOU SLEEP BETTER!

I KNOW YOU LIKE, WHEN I PLAY WITH YOUR TITS BEFORE...

TITTIES?

NO... PUSSY MEANS...




A man and a woman are shown in a conversation. The man is on the left, shirtless, with his back to the camera, looking towards the woman. The woman is on the right, wearing a purple strapless dress, looking back at the man. There are three speech bubbles: a grey one from the man, a green one from the woman, and another grey one from the woman on the right.

PUSSY MEANS...  
PUSSY IS NOT LIKE..  
THIS.. ME NO PUSSY.. ME  
MORE.. WIKE, SMART AND  
STUFF..

OH, HON! YOU'VE  
GOT THAT NIGHTMARE  
AGAIN?

NIGHTMARE...?





YOU KNOW! WHERE YOU'RE THAT SMART OFFICE WOMAN! I TOLD YOU! IT'S JUST A BAD DREAM! YOU NEVER HAD TO WORK A MINUTE EVER! DADDY'S GOT EVERYTHING COVERED!

YOU'RE MY BRITTLE BIMBO ANGEL!

I AM?

OF COURSE, NOW WHY DON'T WE MAKE SURE YOU FINISH THE DAY, HAPPY?



oooooooooh!

The End