



MIDGE BRETON TOP

Sizes 18-34 with cup sizes A-H

5/8 inch (in) (1.5 cm) seam allowances are included on all pattern pieces.

**SIZE 18-34
PATTERN
SIZE KEY**

18	-----
20
22	-----
24	-----
26
28	-----
30	-----
32
34	-----

SYMBOL KEY

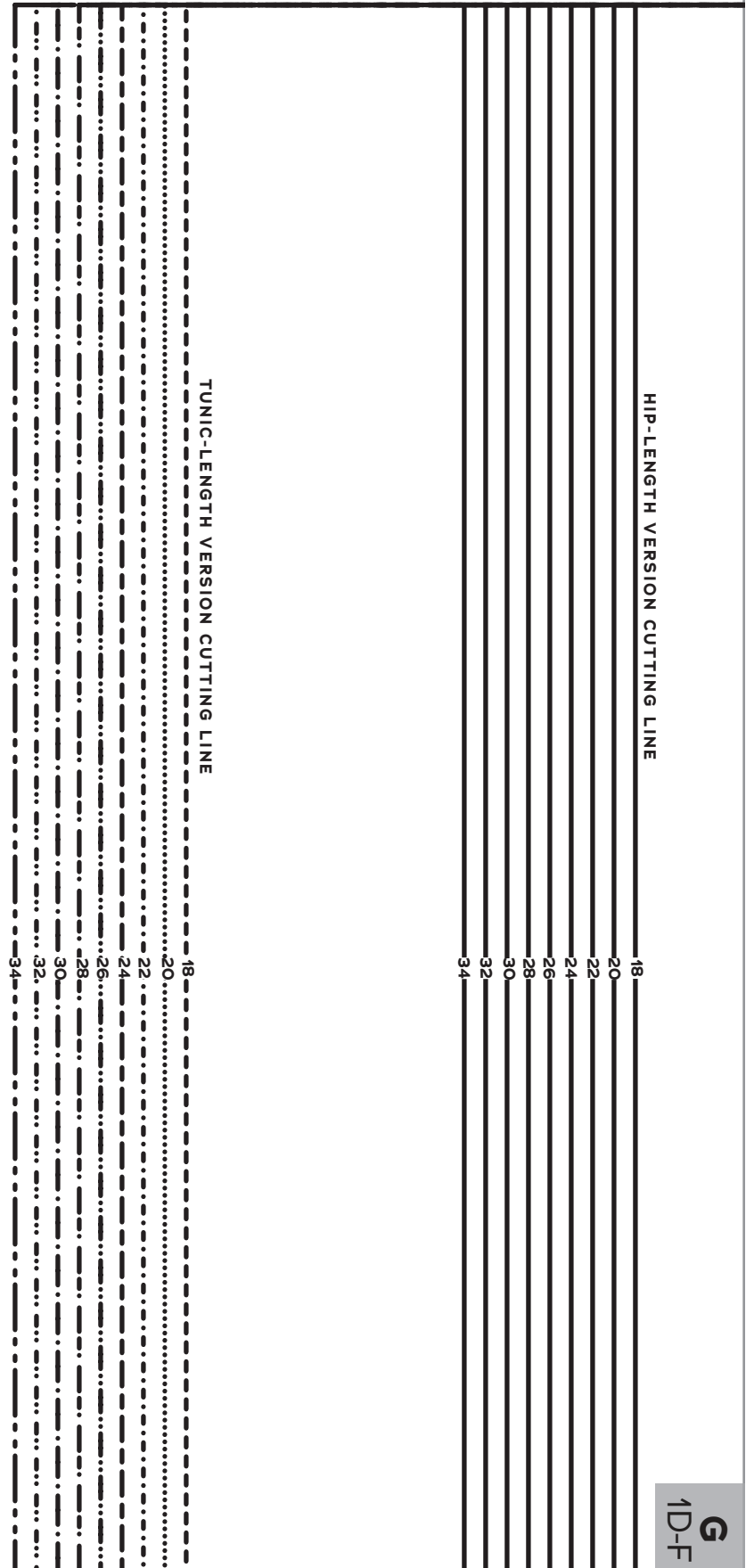
grainline arrow



match point/
placement mark



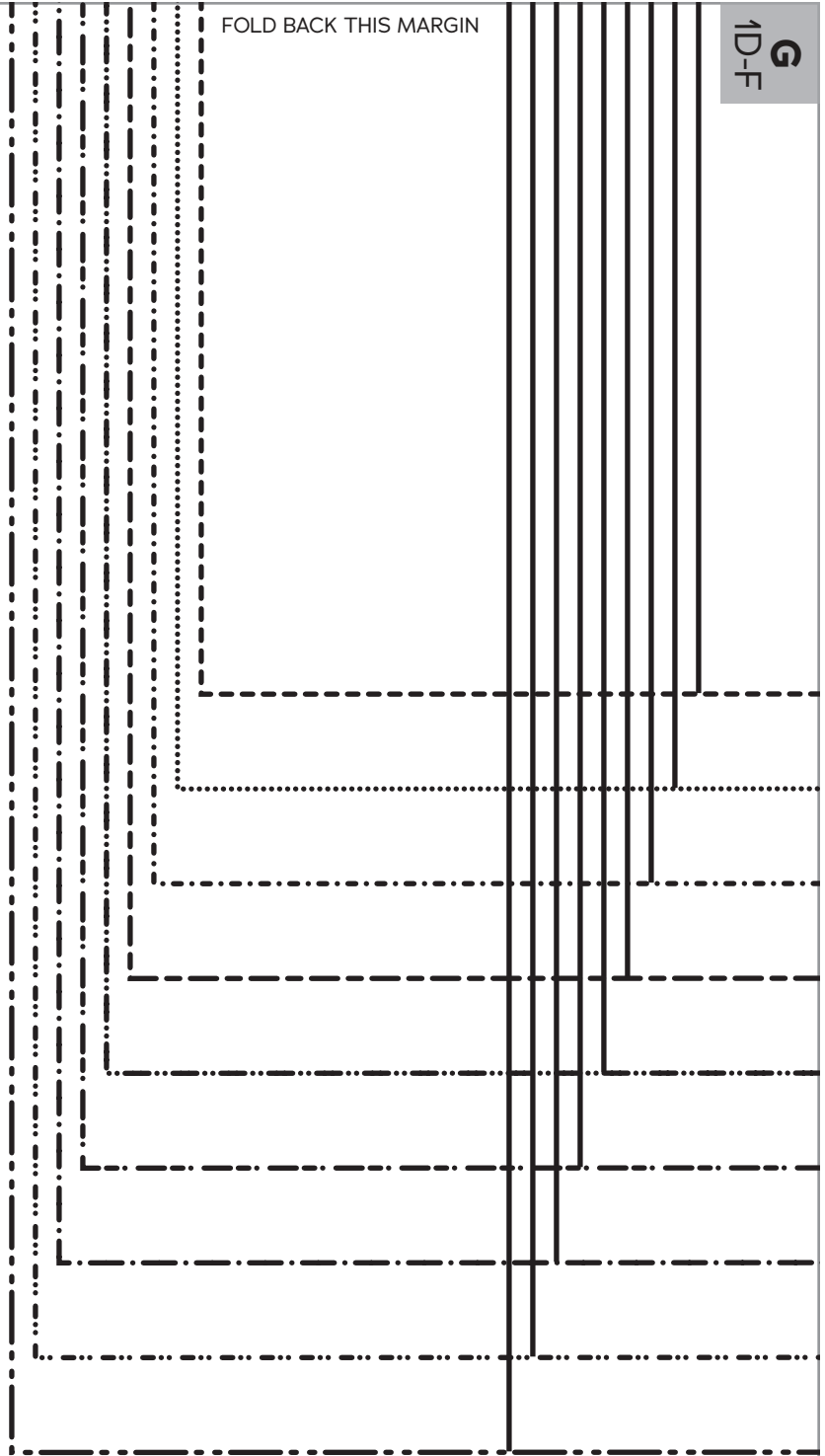
**1" test
square**

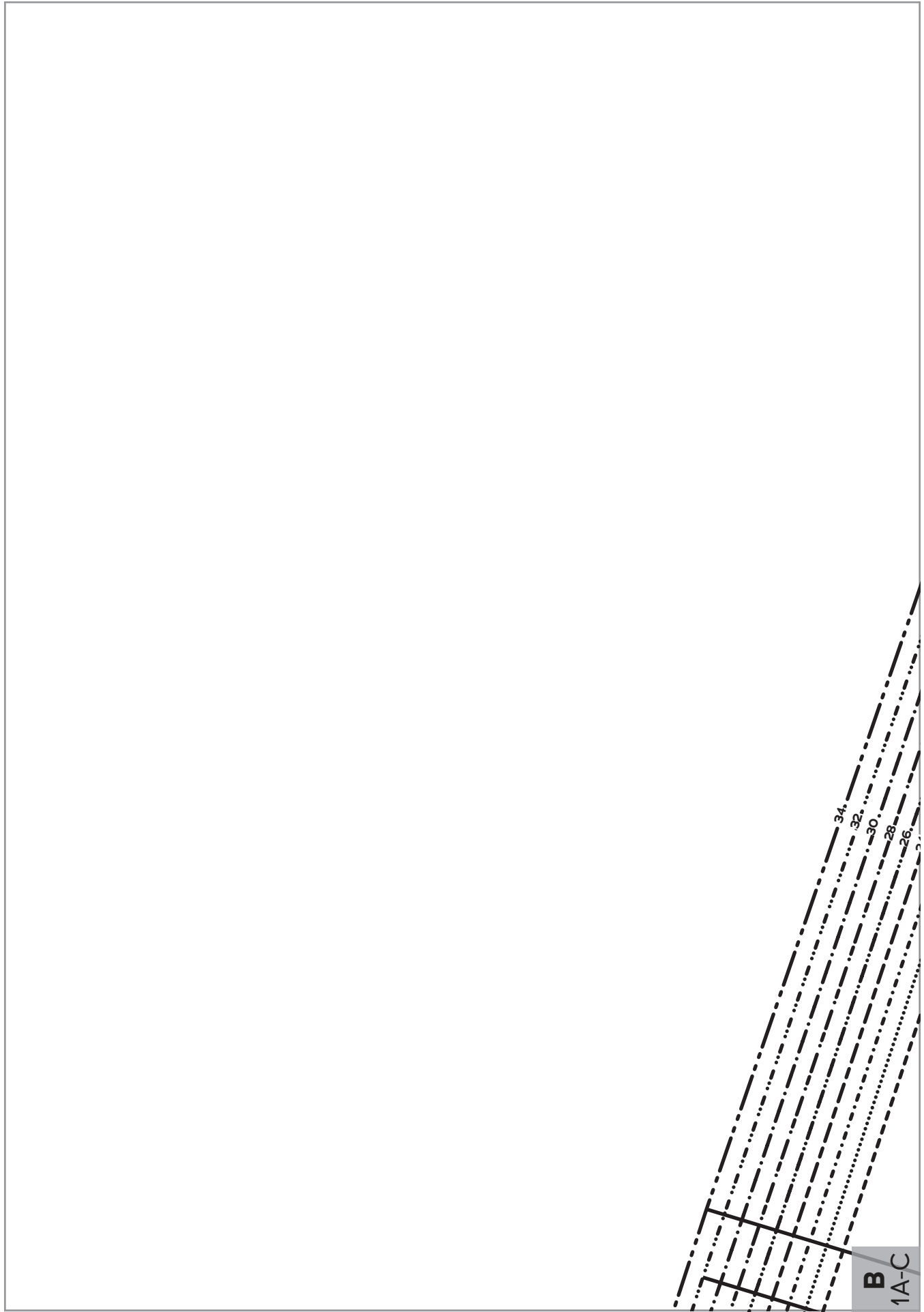


G
1D-F

FOLD BACK THIS MARGIN

1D-F
G



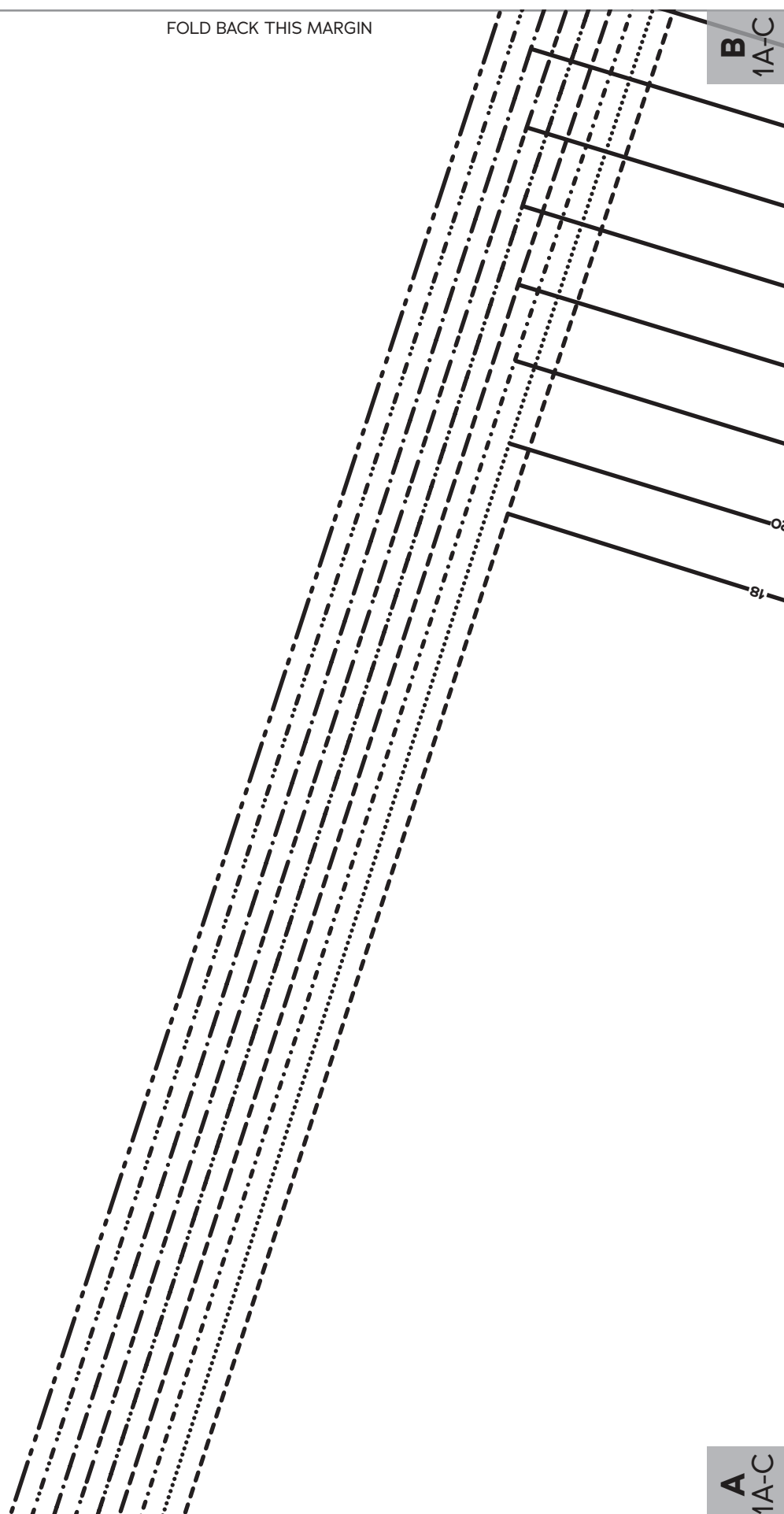


B
1A-C

FOLD BACK THIS MARGIN

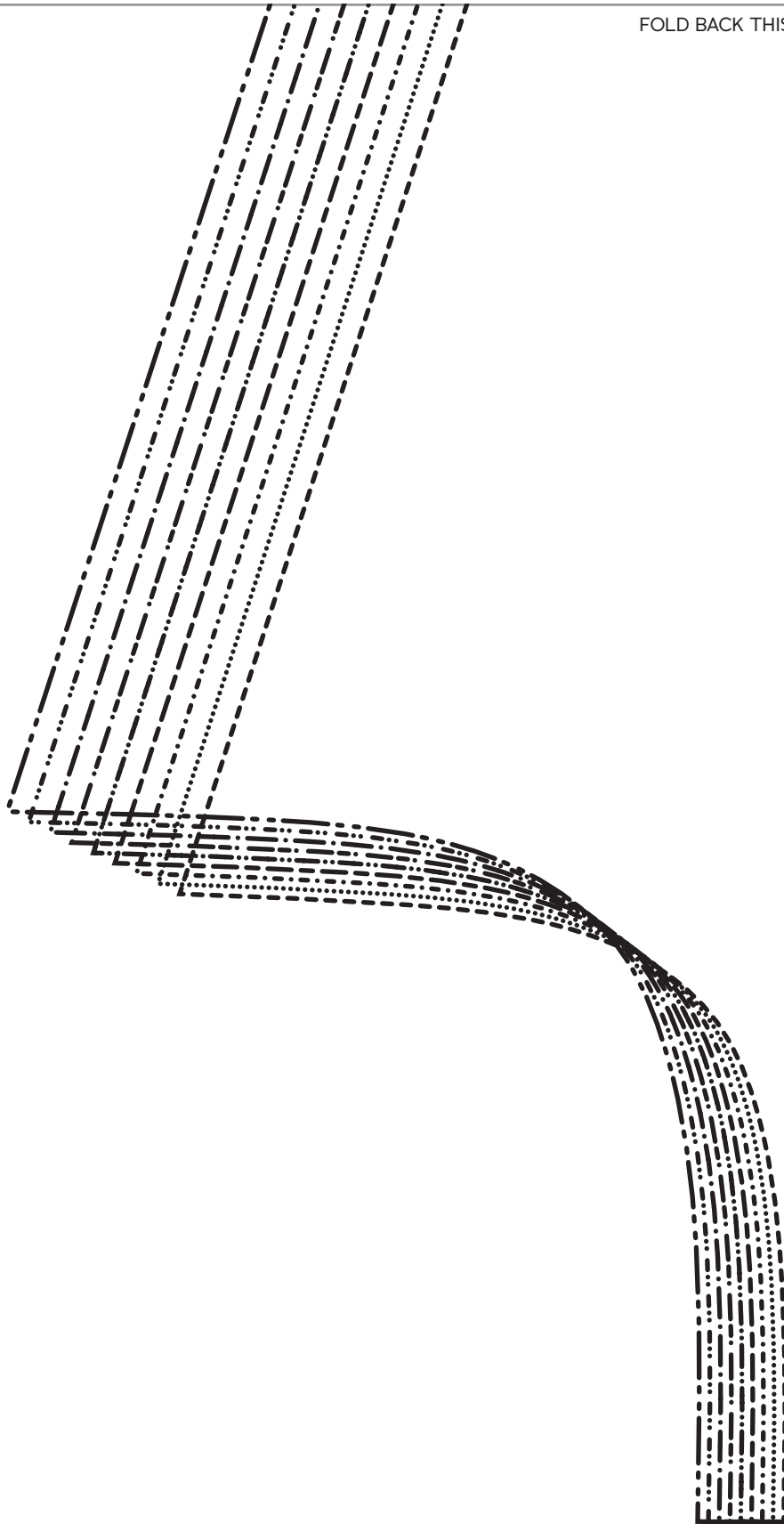
B
1A-C

A
1A-C



FOLD BACK THIS MARGIN

A
1A-C





F
1D-F

● 18 ● 20 ● 22 ● 24 ● 26 ● 28 ● 30
HIP-LENGTH VERSION POCKET

CROPPED VERSION CUTTING LINE

18
20
22
24
26
28
30
32
34

● 18 ● 20 ● 22 ● 24 ● 26 ● 28 ● 30
TUNIC-LENGTH VERSION POCKET

1D-F
FOLD BACK THIS MARGIN

G
1D-F

F
1D-F

● 32
● 34

FOLD BACK THIS MARGIN

● 32
● 34

G
1D-F

FOLD BACK THIS MARGIN

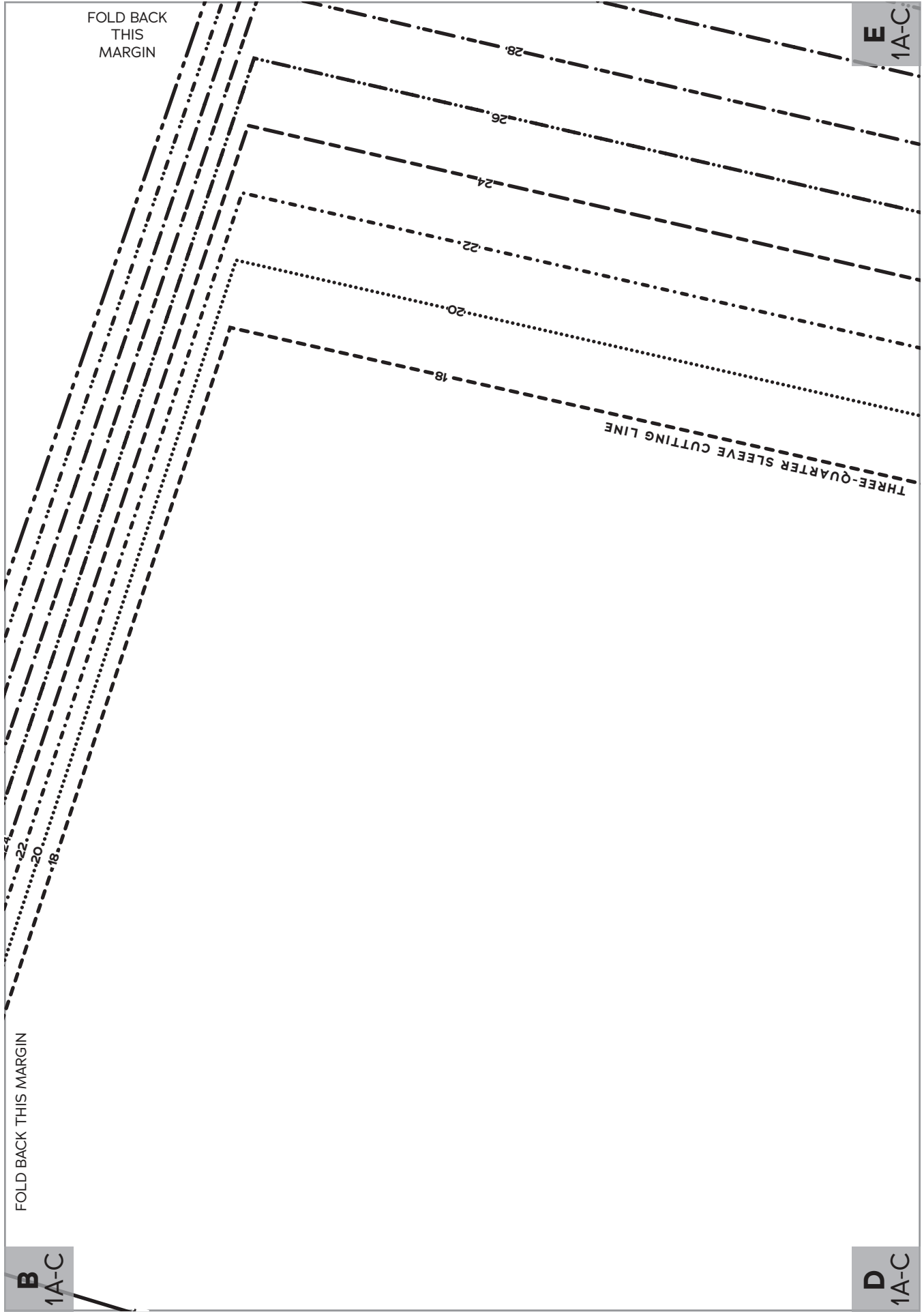
E
1A-C

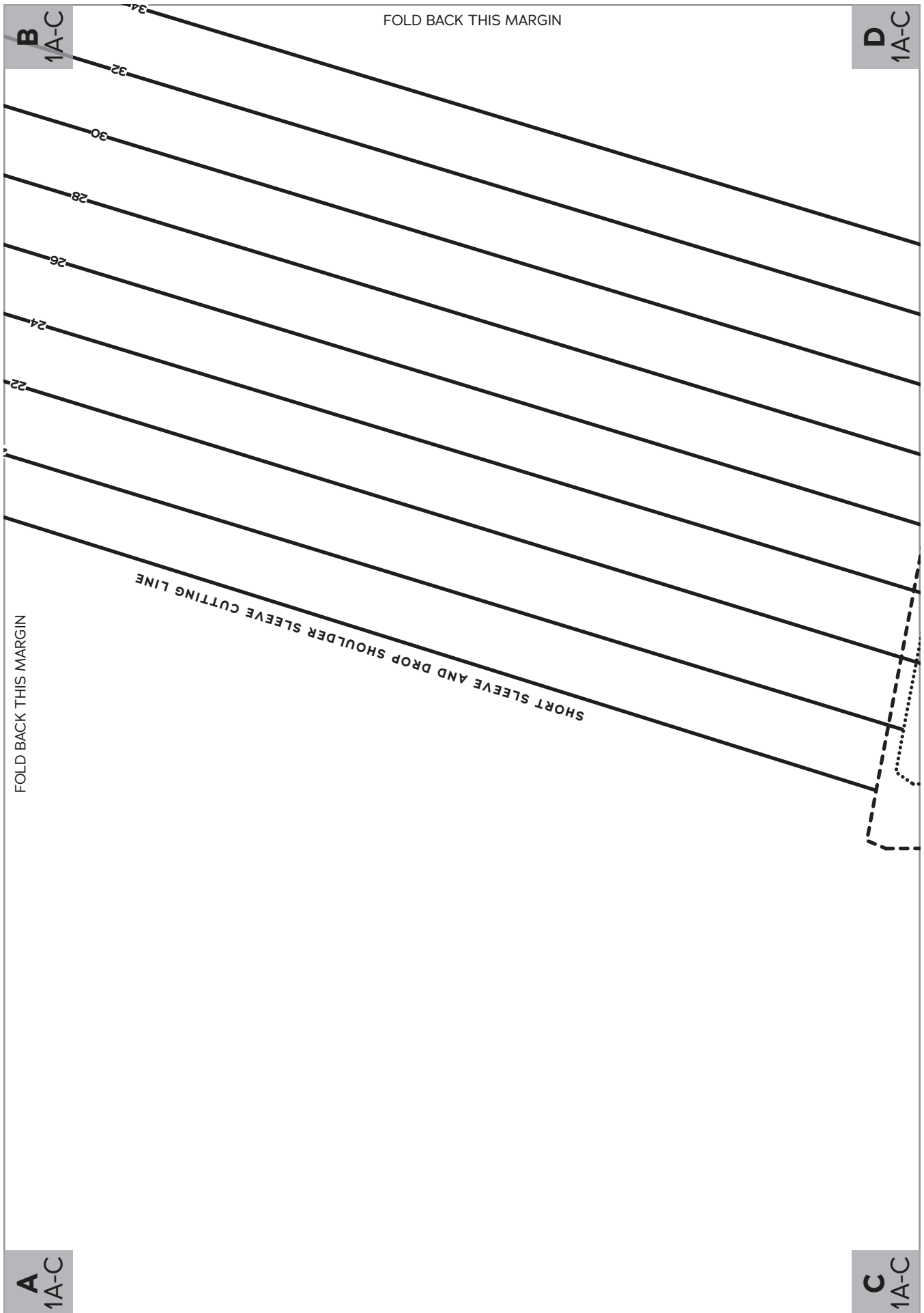
30

32

34







FOLD BACK THIS MARGIN

FOLD BACK THIS MARGIN

SHORT SLEEVE AND DROP SHOULDER SLEEVE CUTTING LINE

A
1A-C

C
1A-C

B
1A-C

D
1A-C

A
1A-C

FOLD BACK THIS MARGIN

C
1A-C

FOLD BACK THIS MARGIN



**MIDGE
BRETON
TOP**

SIZES 18-34

1

Top
Front
A-C Cup
Cut 1 fabric on fold

FOLD

FOLD

FOLD BACK THIS MARGIN

18 ●
20 ●
22 ●
24 ●
26 ●
28 ●
30 ●
CROPPED VERSION POCKET

F
1D-F

C
1D-F

C
1D-F

FOLD BACK THIS MARGIN

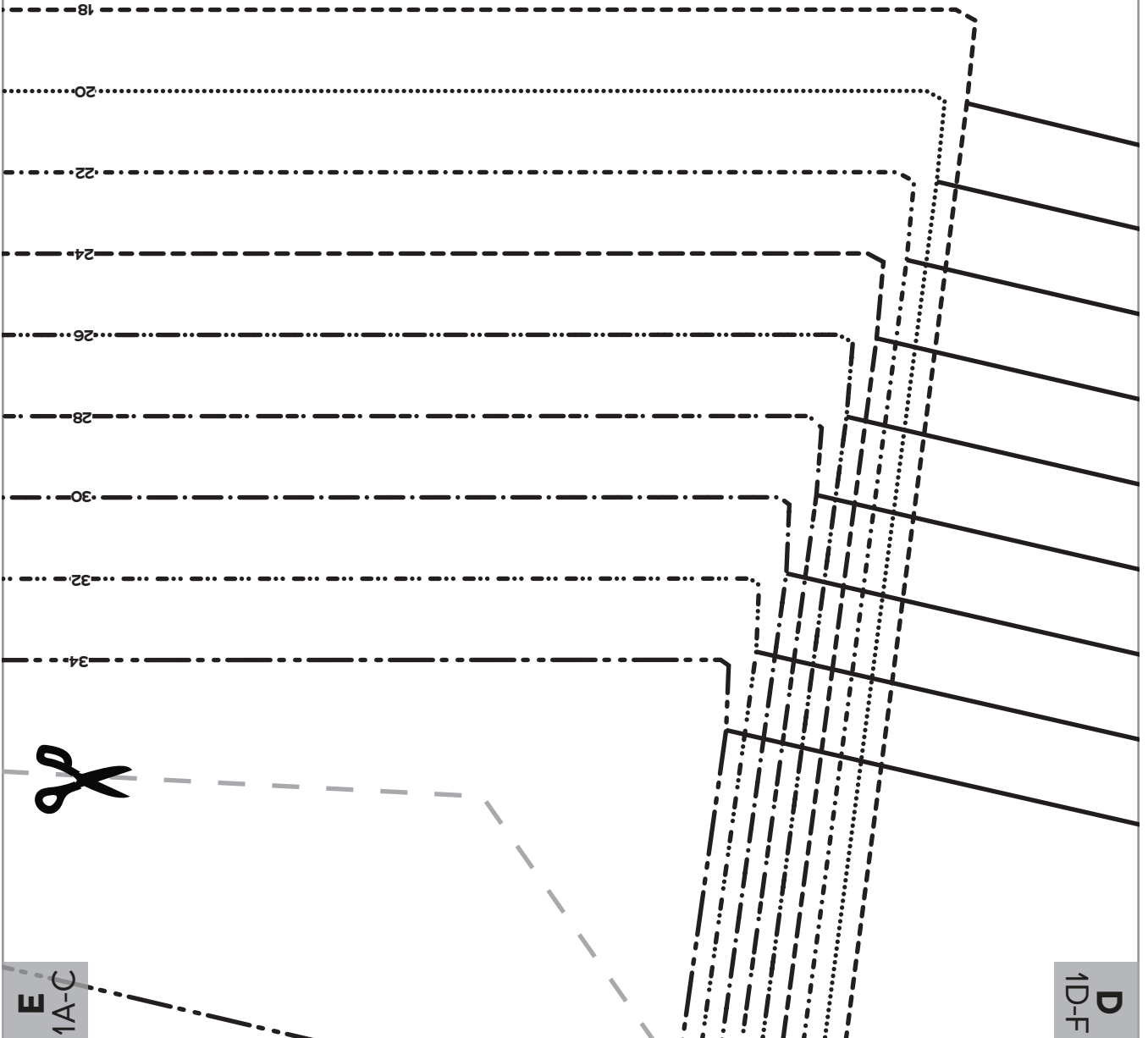
- 32
- 34

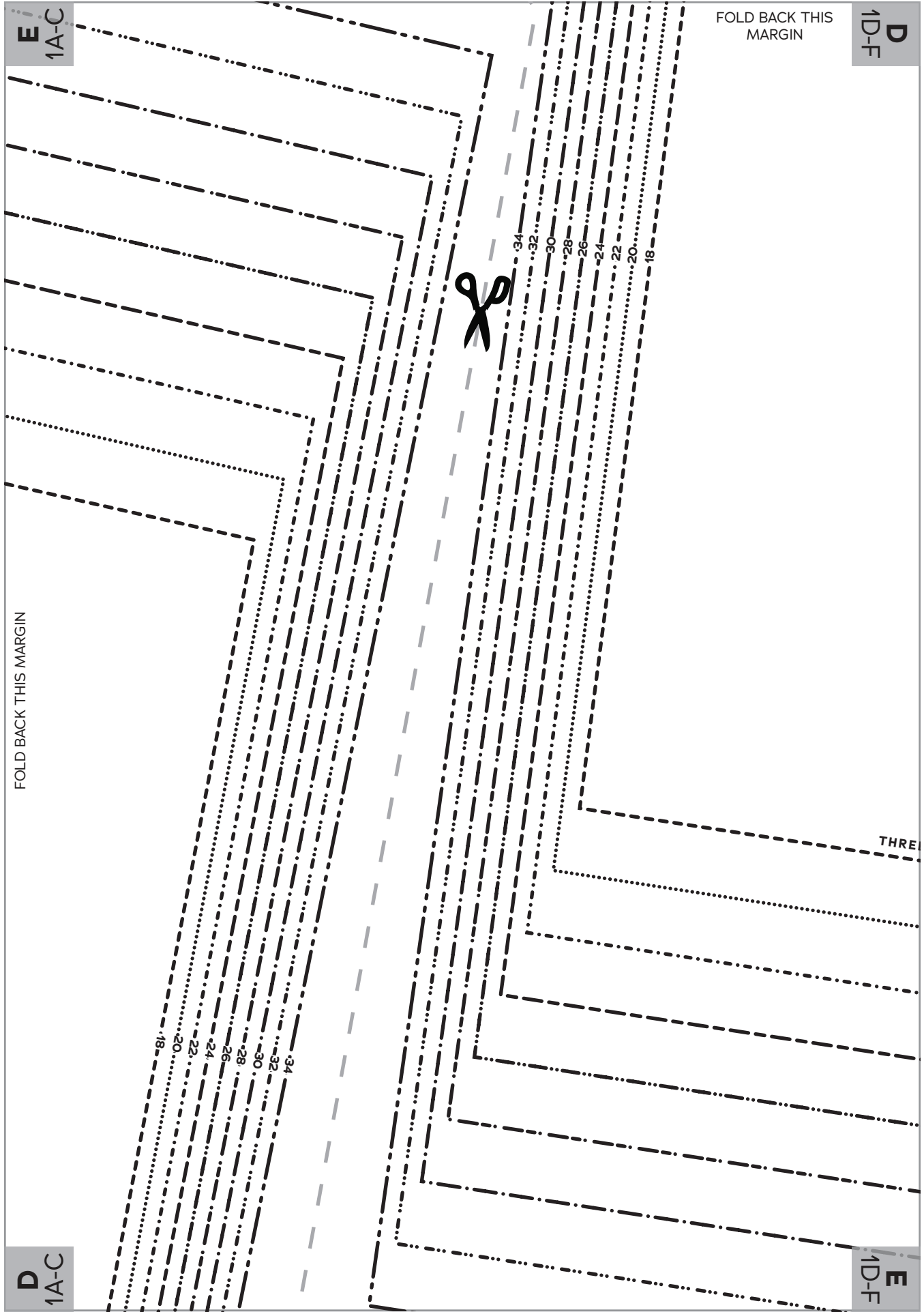
F
1D-F

FOLD BACK THIS MARGIN

D
1D-F

E
1A-C





FOLD BACK THIS MARGIN

FOLD BACK THIS MARGIN

E
1A-C

D
1D-F

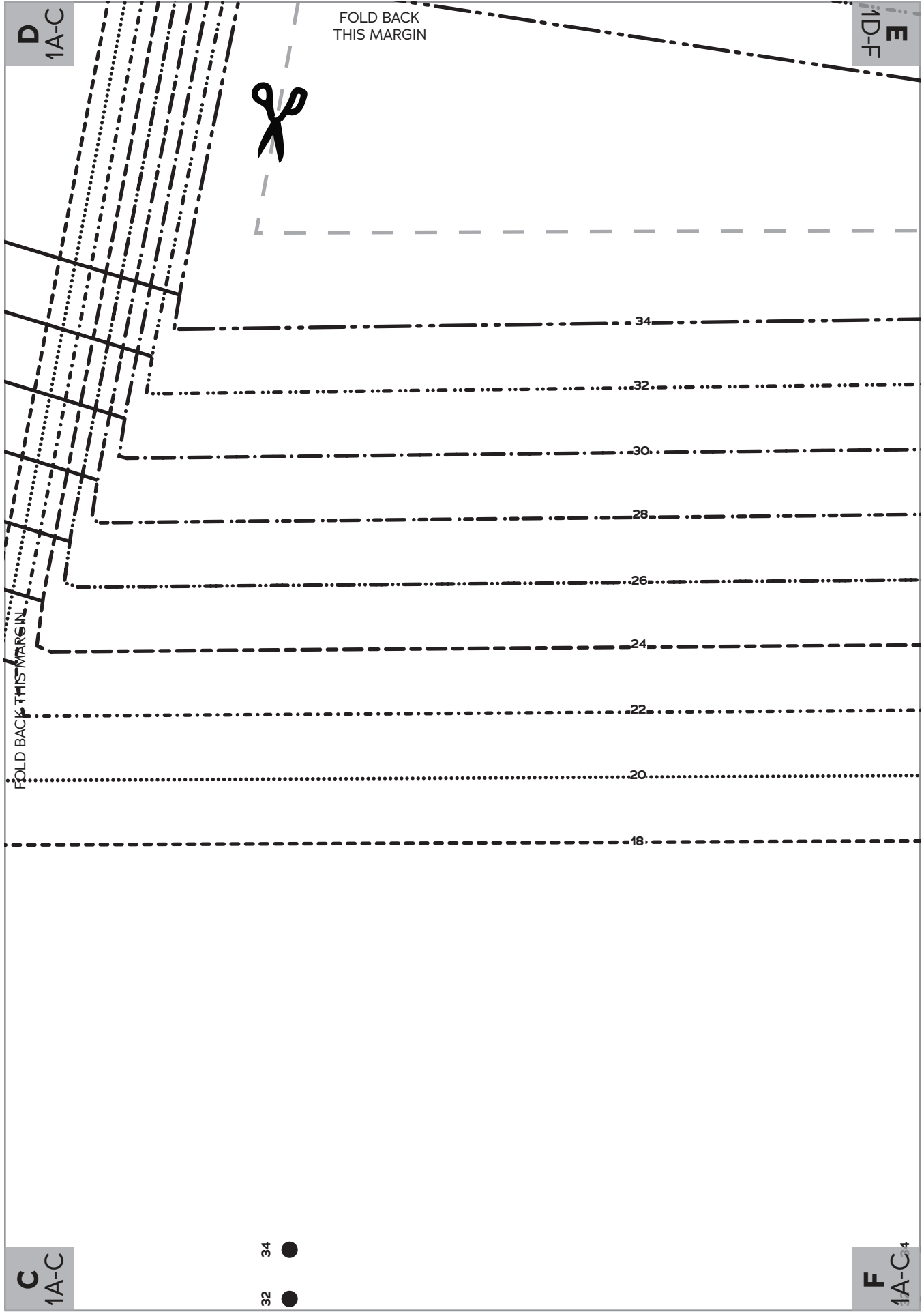
D
1A-C

E
1D-F

34
32
30
28
26
24
22
20
18

34
32
30
28
26
24
22
20
18

THREE



D
1A-C

E
F-D-F

FOLD BACK
THIS MARGIN



FOLD BACK THIS MARGIN.

34

32

30

28

26

24

22

20

18

C
1A-C

F
1A-C4

34 ●
32 ●

C
1A-C

FOLD BACK THIS MARGIN

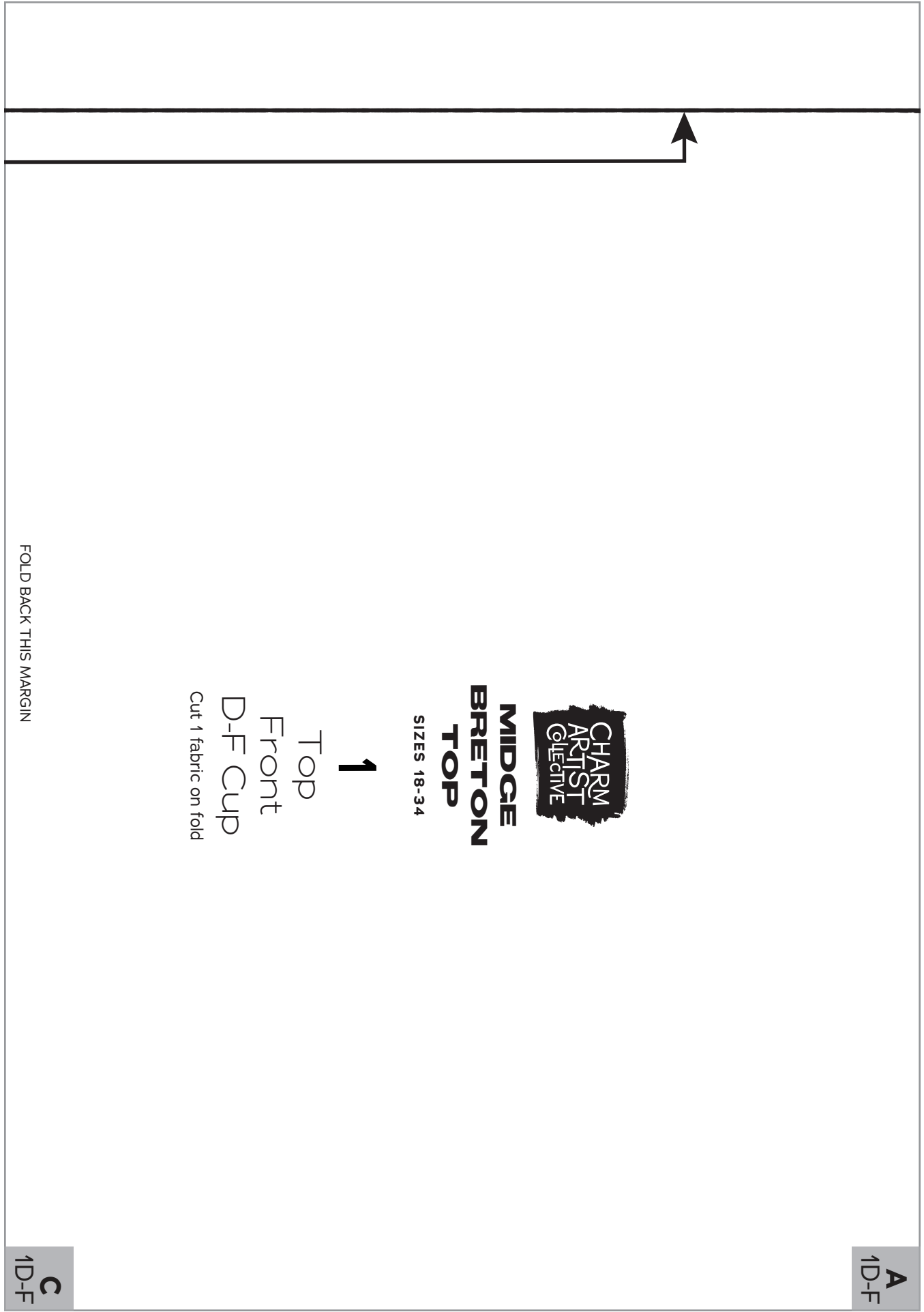
F
1A-C

FOLD BACK THIS MARGIN

- 18 ●
 - 20 ●
 - 22 ●
 - 24 ●
 - 26 ●
 - 28 ●
 - 30 ●
- CROPPED VERSION POCKET

- 18
- 20
- 22
- 24
- 26
- 28





**MIDGE
BRETON
TOP**

SIZES 18-34

1

Top
Front
D-F Cup
Cut 1 fabric on fold

FOLD BACK THIS MARGIN

A
1D-F

C
1D-F

FOLD BACK THIS MARGIN

A
1D-F

C
1D-F

FOLD BACK THIS MARGIN

SHORT SLEEVE AND DROP SHOULDER SLEEVE CUTTING LINE

18

20

22

24

26

28

30

32

34

B
1D-F

D
1D-F

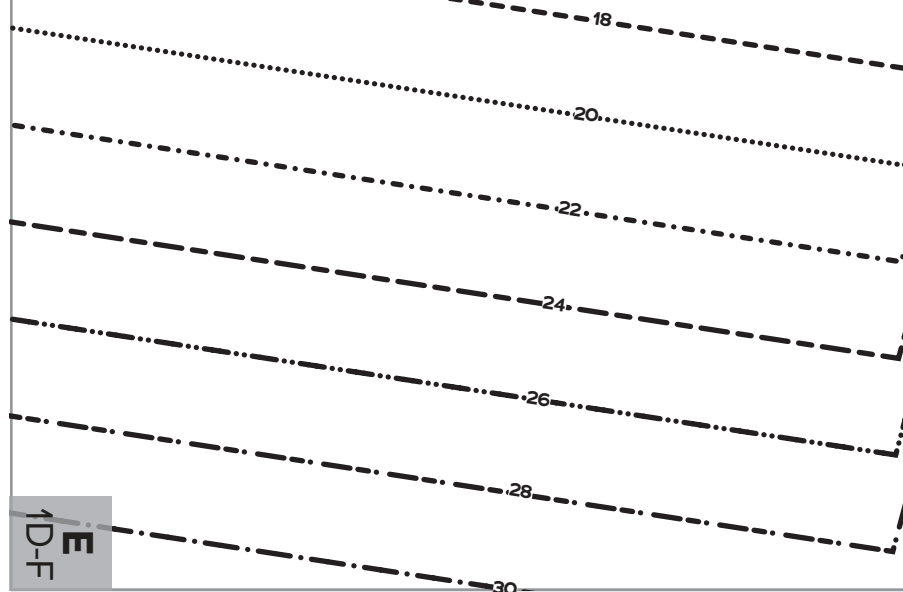
FOLD BACK THIS MARGIN

B
1D-F

D
1D-F

FOLD BACK THIS MARGIN

3/4-QUARTER SLEEVE CUTTING LINE



18
20
22
24
26
28
30
32
34

E
1D-F

E
D-F

FOLD BACK THIS MARGIN

32

34



FOLD BACK THIS MARGIN

F
1A-C

34 ●

32 ●

G
1A-C

FOLD BACK THIS MARGIN

HIP-LENGTH VERSION POCKET

F
1A-C

CROPPED VERSION CUTTING LINE

18
20
22
24
26
28
30
32
34

18 ● 20 ● 22 ● 24 ● 26 ● 28 ● 30 ●

TUNIC-LENGTH VERSION POCKET

FOLD BACK THIS MARGIN

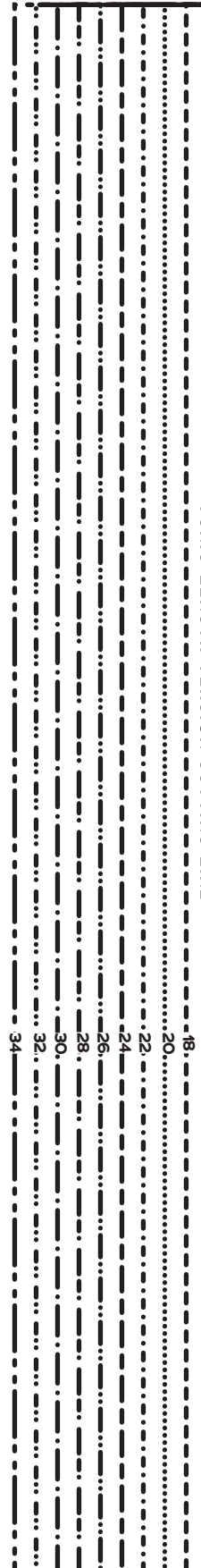
HIP-LENGTH VERSION CUTTING LINE

18
20
22
24
26
28
30
32

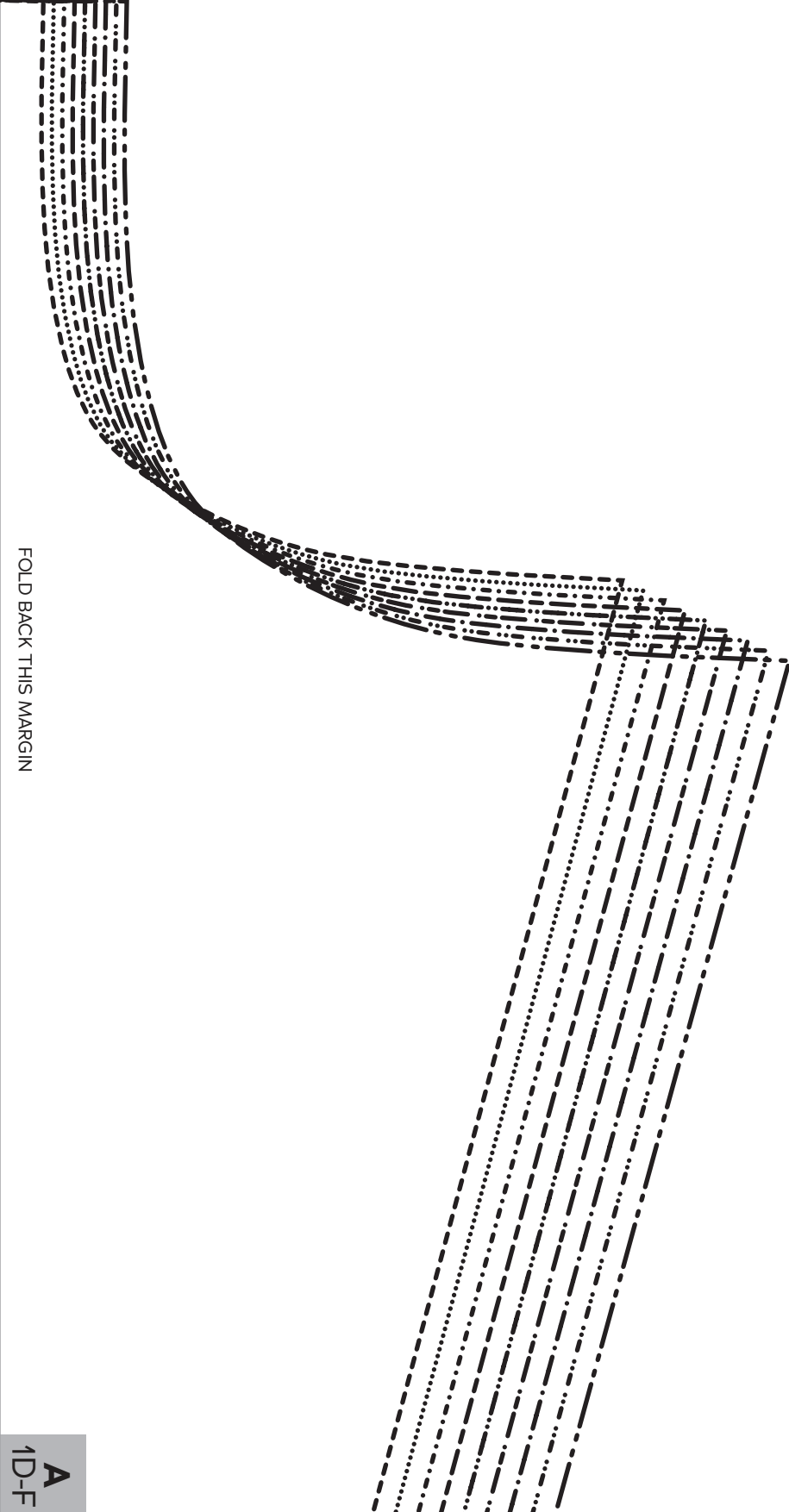
G
1A-C



TUNIC-LENGTH VERSION CUTTING LINE



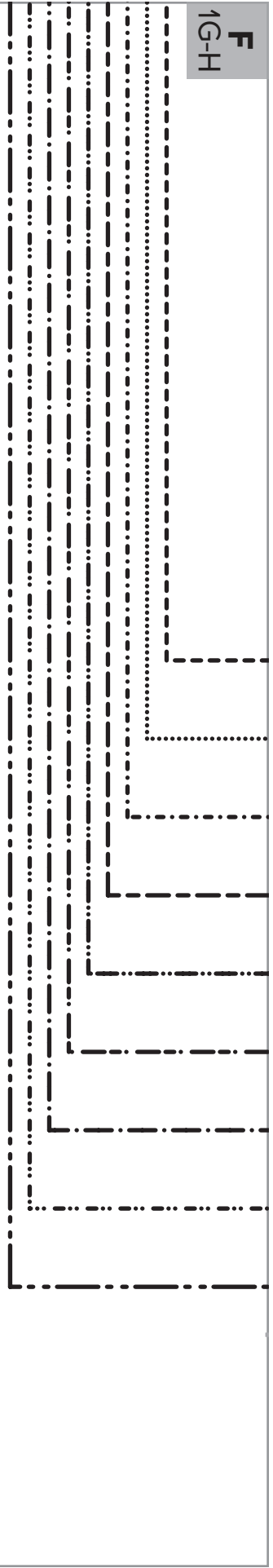
F
1G-H



FOLD BACK THIS MARGIN

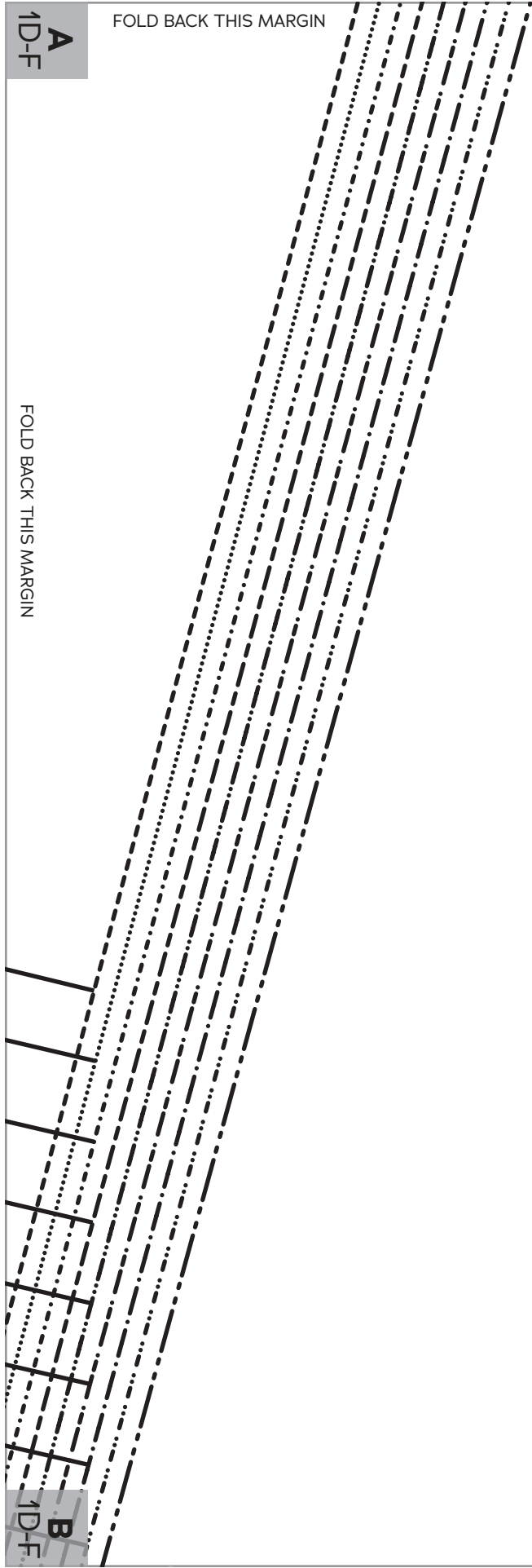
A
1D-F

F
1G-H



FOLD BACK THIS MARGIN

A
1D-F



FOLD BACK THIS MARGIN

B
1D-F



**MIDGE
BRETON
TOP**

SIZES 18-34

5

Patch
Pocket

Cut 1 fabric

●
MATCH TO
TOP FRONT



A
5



FOLD BACK THIS MARGIN

G
1A-C

A
2

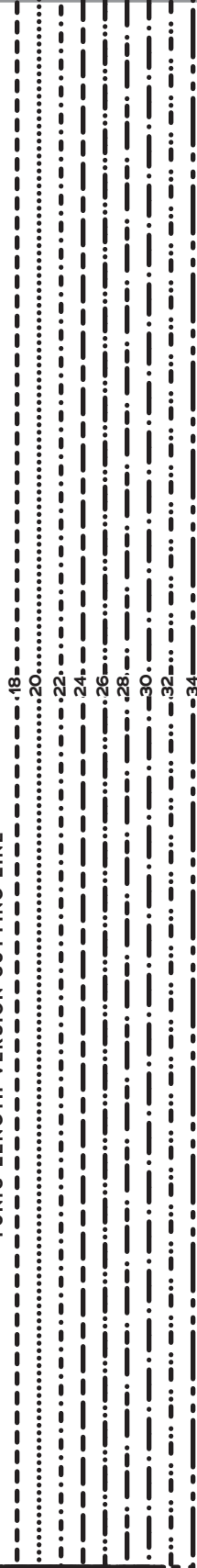
G
1A-C

FOLD BACK
THIS MARGIN

FOLD BACK THIS MARGIN

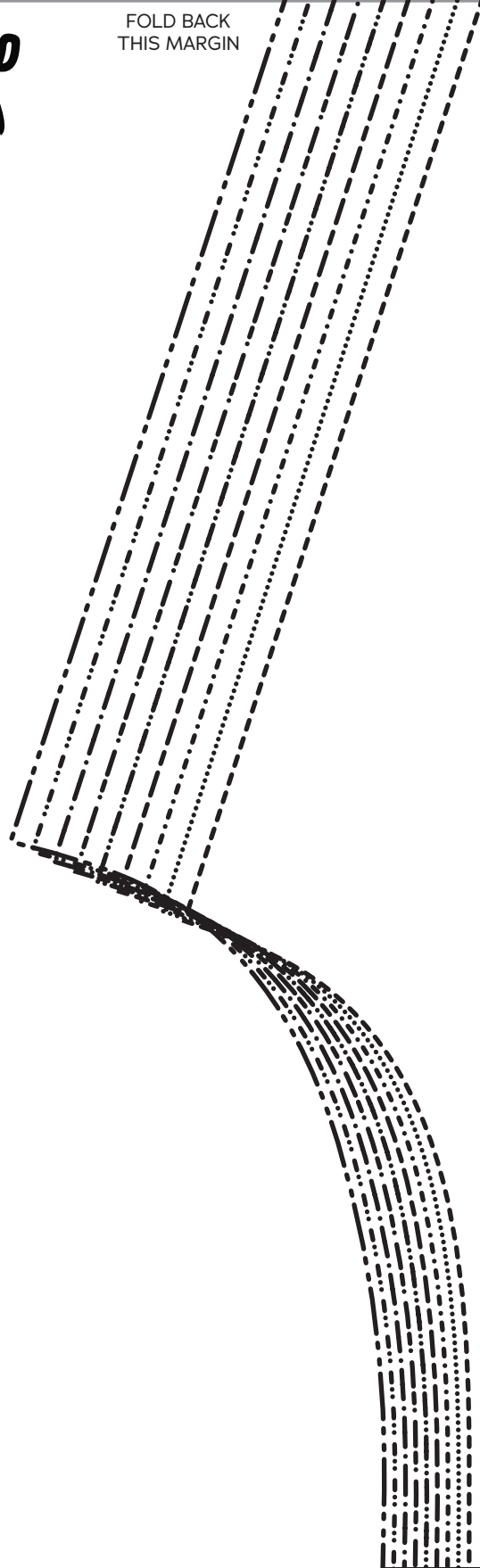
34

TUNIC-LENGTH VERSION CUTTING LINE



FOLD BACK
THIS MARGIN

A
2



CROPPED VERSION CUTTING LINE

18

20

22

24

26

28

30

32

34

E
1G-H

18 ● 20 ● 22 ● 24 ● 26 ● 28 ●

TUNIC-LENGTH VERSION

HIP-LENGTH VERSION CUTTING LINE

18

20

22

24

26

28

30

32

34

FOLD BACK THIS MARGIN

F
1G-H

E
1G-H

- 30
 - 32
 - 34
- POCKET

FOLD BACK THIS MARGIN

F
1G-H

FOLD BACK THIS MARGIN

D
2



FOLD BACK THIS MARGIN



D 2

FOLD BACK THIS MARGIN

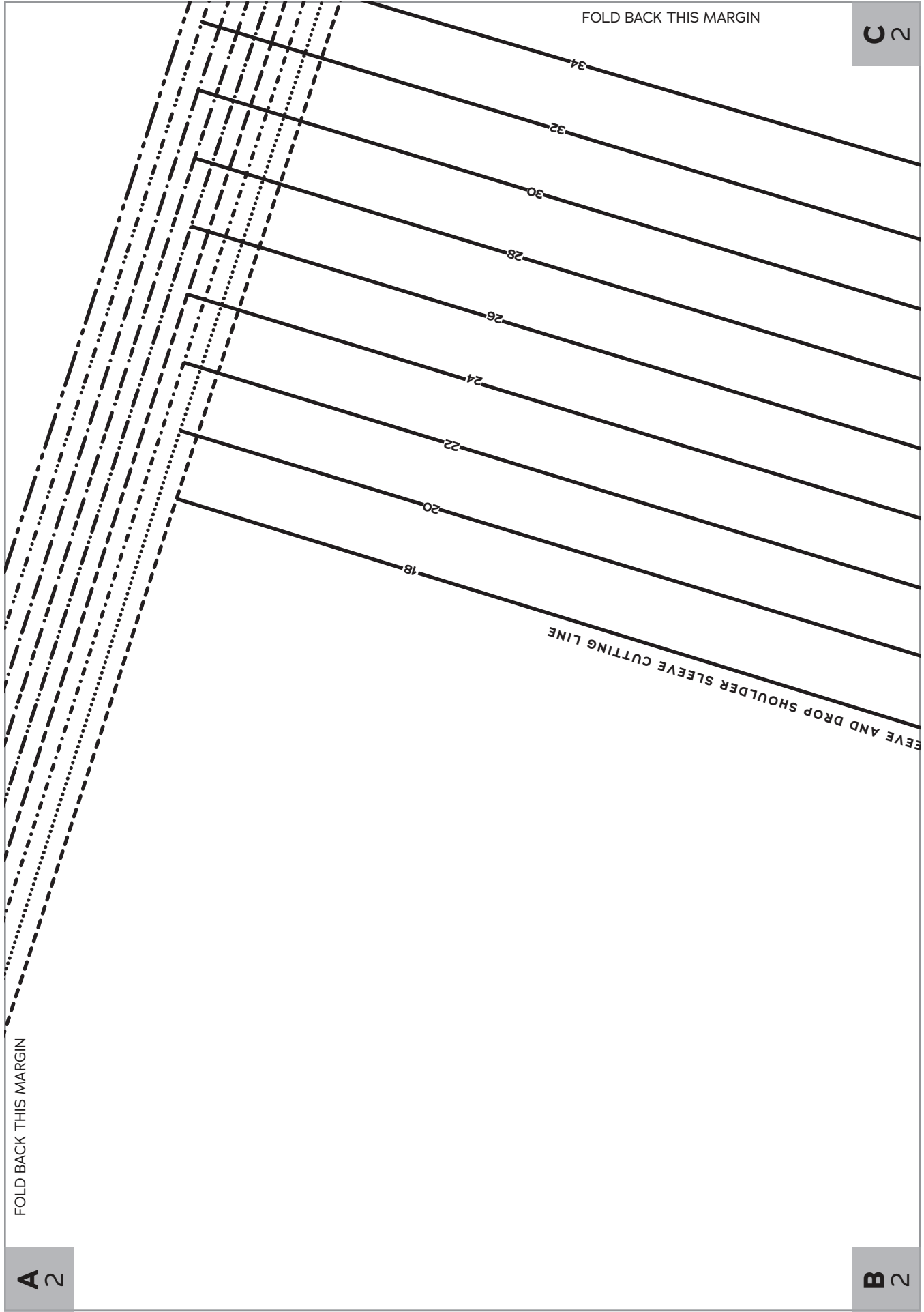
A

5

18
20
22
24
26
28
30
32
34

34
32
30
28
26
24
22
20
18

C 2



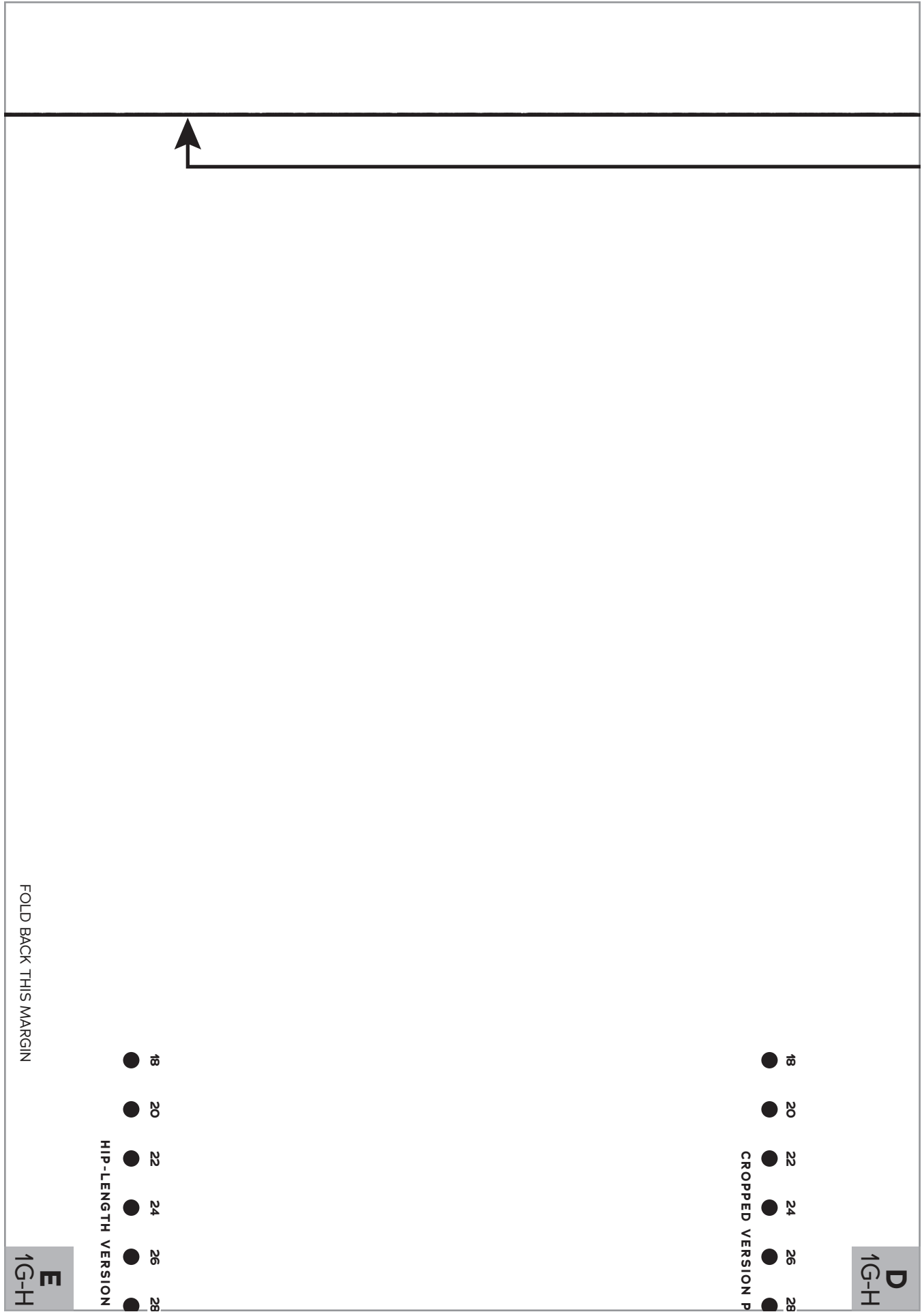
A 2

FOLD BACK THIS MARGIN

B 2

FOLD BACK THIS MARGIN





D
1G-H

● 18 ● 20 ● 22 ● 24 ● 26 ● 28
CROPPED VERSION P

● 18 ● 20 ● 22 ● 24 ● 26 ● 28
HIP-LENGTH VERSION

E
1G-H

FOLD BACK THIS MARGIN

D
1G-H

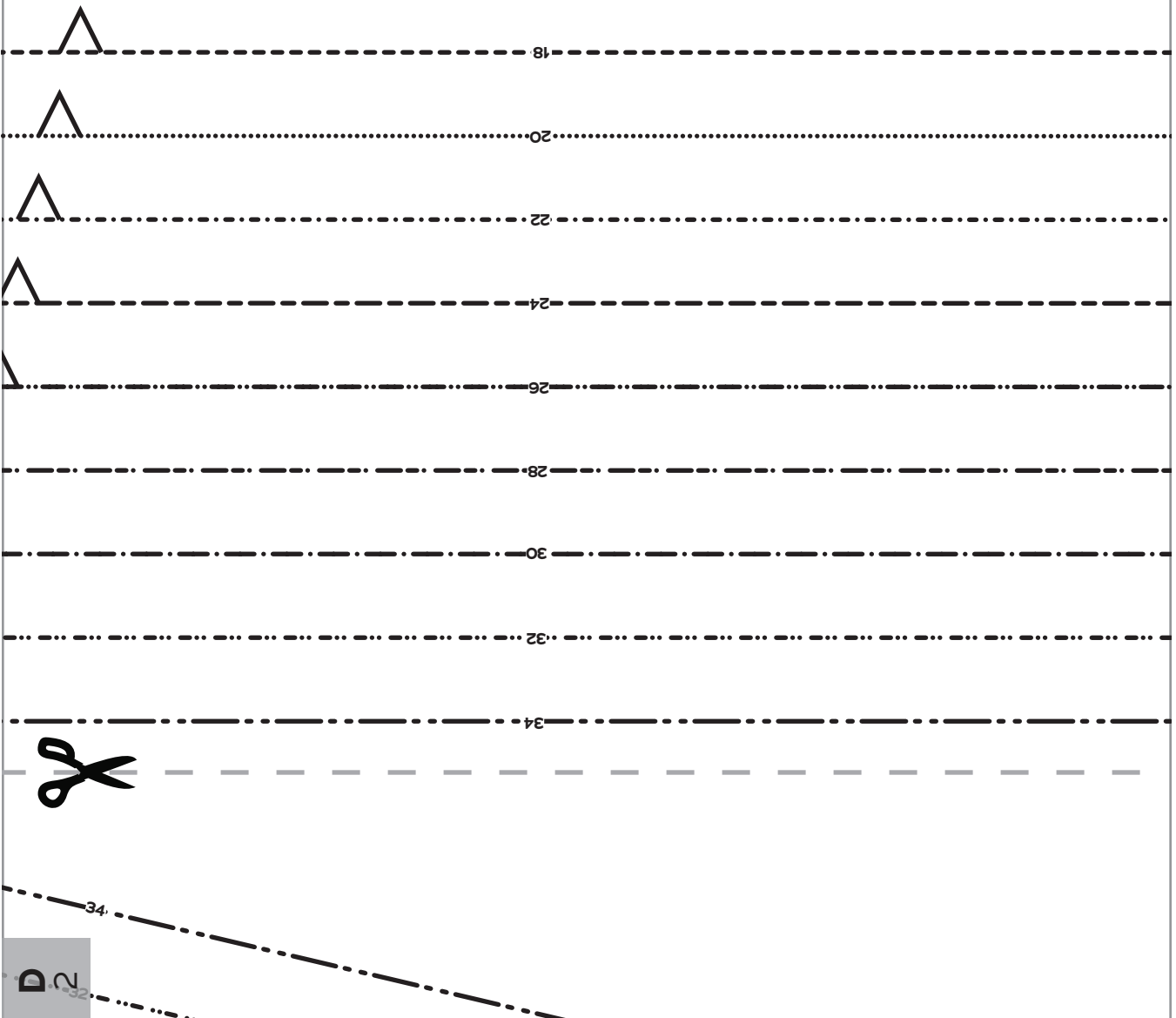
- 30
 - 32
 - 34
- POCKET

FOLD BACK THIS MARGIN

E
1G-H

- 30
 - 32
 - 34
- POCKET

FOLD BACK THIS MARGIN



FOLD BACK THIS MARGIN

D 2
30

28

26

4

THREE-QUARTER SLEEVE CUTTING LINE

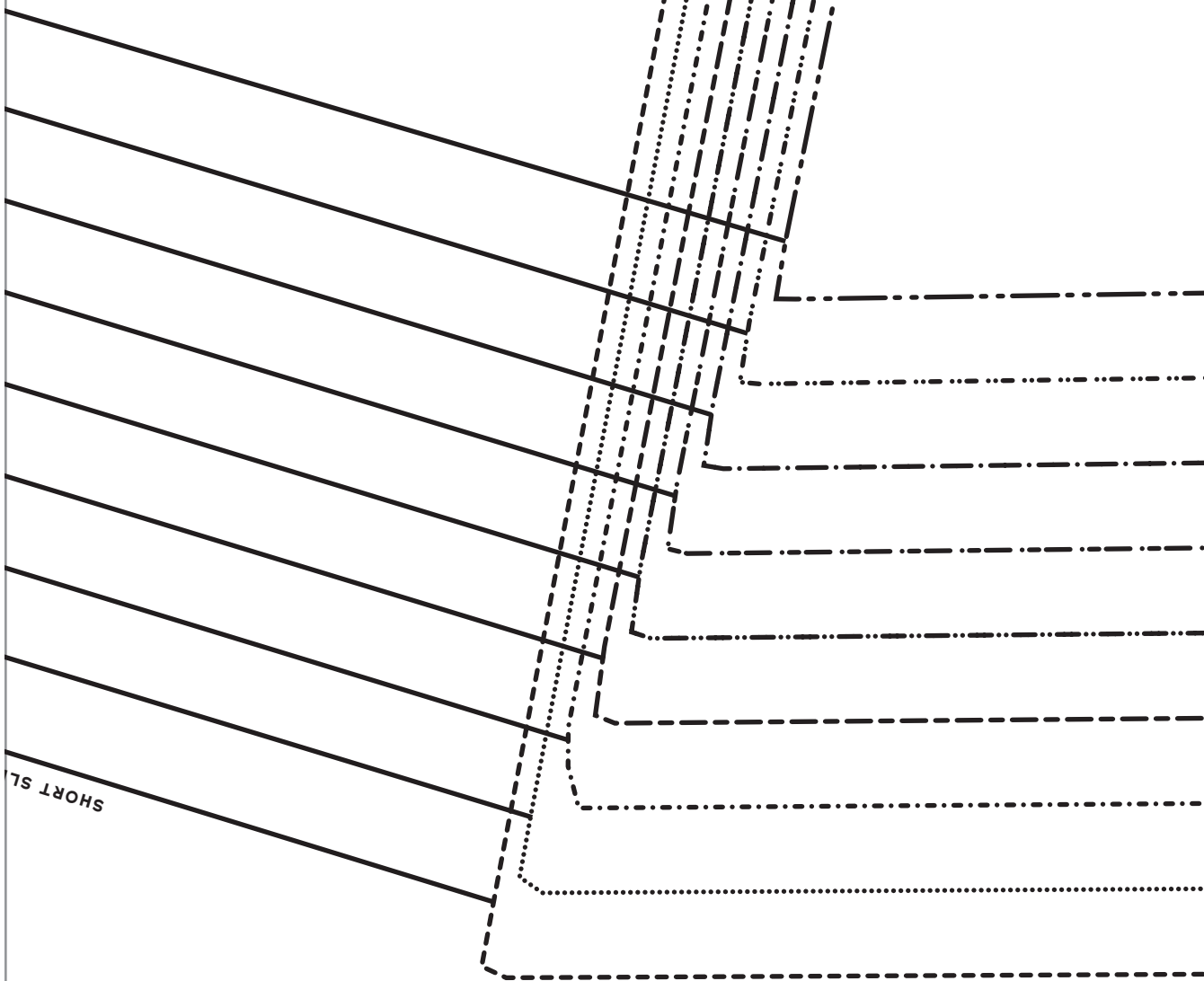
FOLD BACK THIS MARGIN

34
32
30
28
26
24
22
20
18

C 2

C 2

FOLD BACK THIS MARGIN



SHORT SL

FOLD BACK THIS MARGIN

B 2

E 2

B 2

FOLD BACK THIS MARGIN

E 2

FOLD BACK THIS MARGIN



**MIDGE
BRETON
TOP**

SIZES 18-34

2

Top Back

Cut 1 fabric on fold

FOLD

FOLD



**MIDGE
BRETON
TOP**

SIZES 18-34

1

Top

Front

G-H Cup

Cut 1 fabric on fold

FOLD BACK THIS MARGIN

A
1G-H

D
1G-H

FOLD BACK THIS MARGIN

A
1G-H

D
1G-H

FOLD BACK THIS MARGIN

SHORT SLEEVE AND DROP SHOULDER SLEEVE

B
1G-H

B
1G-H

FOLD BACK THIS MARGIN

34
32
30
28
24
22
20
18

THREE-QUARTER SLEEVE CUTTING LINE

C
1G-H

FOLD BACK
THIS
MARGIN

G-H
C



34

32

30

28

26

24

22

20

18

FOLD BACK THIS MARGIN

E 2

F 2

E 2

FOLD BACK THIS MARGIN

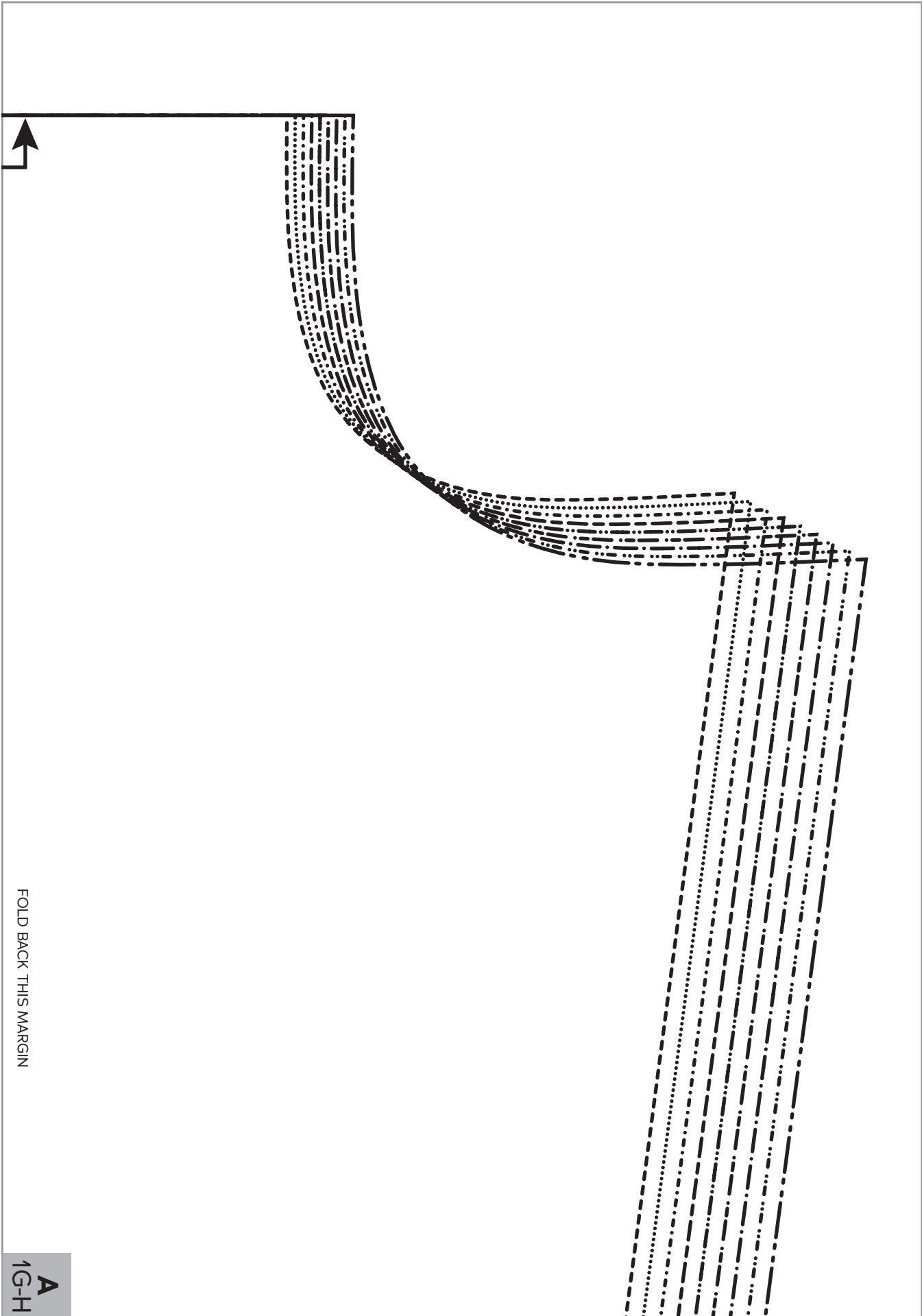
E 2

FOLD BACK THIS MARGIN



CROPPED VERSION CUTTING LINE

18
20
22
24
26
28
30
32
34



FOLD BACK THIS MARGIN

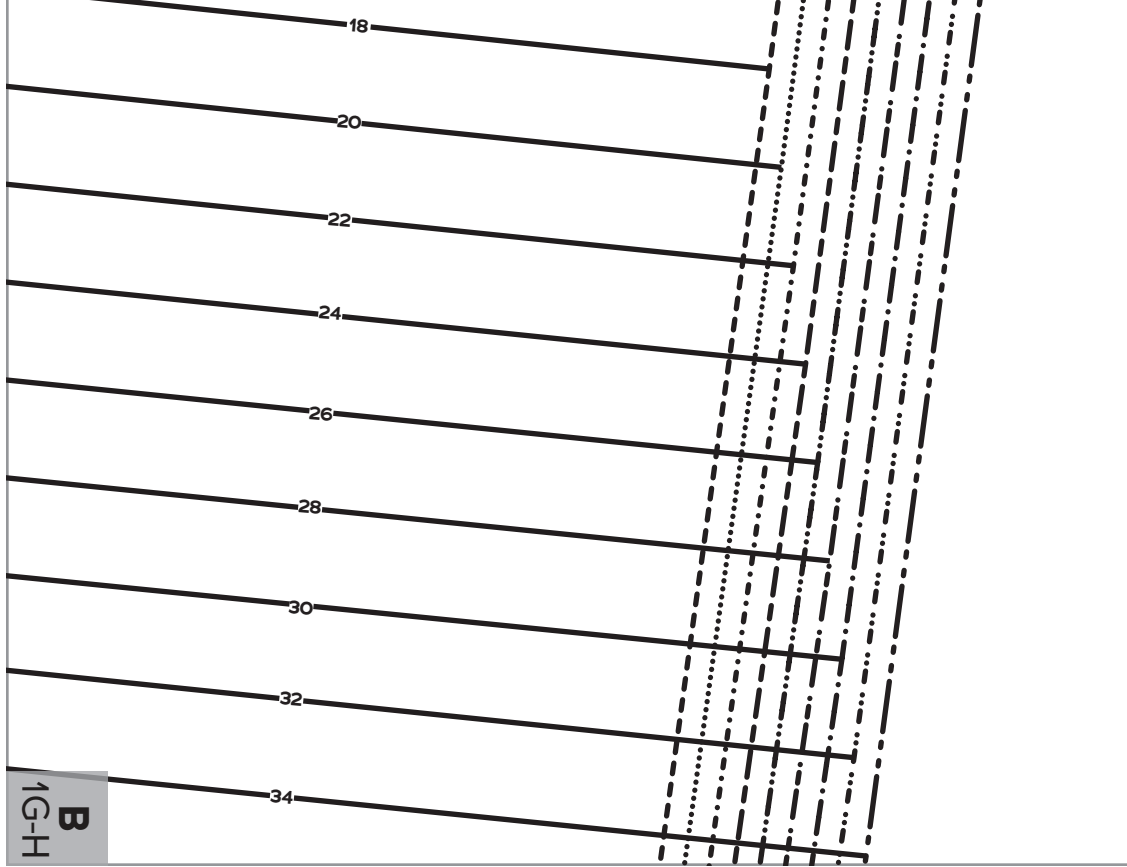
A
1G-H

A
1G-H

FOLD BACK THIS MARGIN

FOLD BACK THIS MARGIN

CUTTING LINE



B
1G-H

FOLD BACK THIS MARGIN

B
1G-H



C
1G-H

H-G
C

30

32

34

FOLD BACK THIS MARGIN



FOLD BACK THIS MARGIN

F 2

FOLD BACK THIS MARGIN

F 2

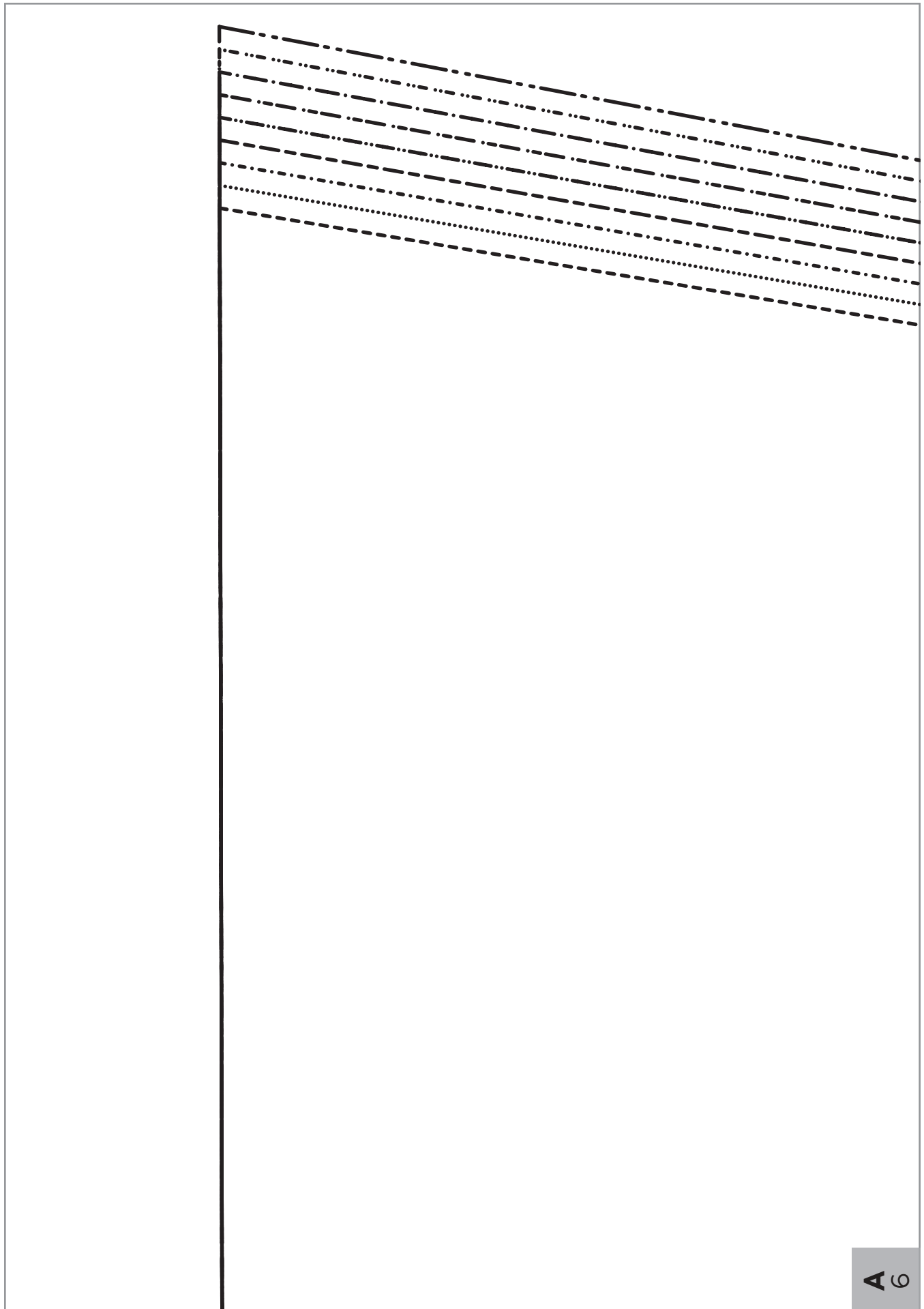
HIP-LENGTH VERSION CUTTING LINE

- 18
- 20
- 22
- 24
- 26
- 28
- 30
- 32
- 34

FOLD BACK THIS MARGIN

TUNIC-LENGTH VERSION CUTTING LINE

- 18
- 20
- 22
- 24
- 26
- 28
- 30
- 32
- 34



A C

FOLD BACK THIS MARGIN



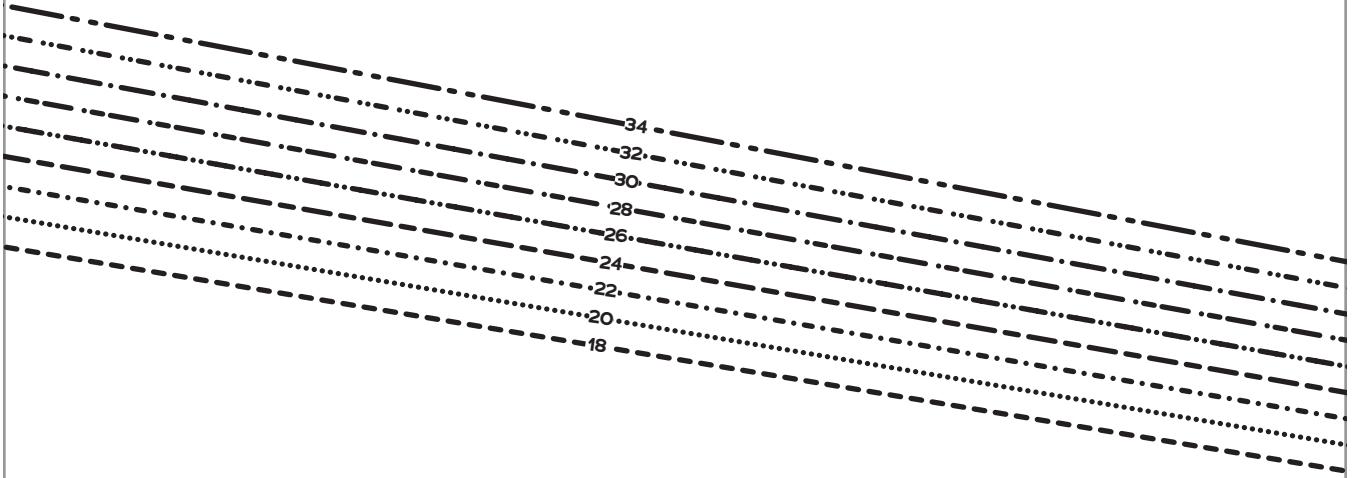
**MIDGE
BRETON
TOP**

SIZES 18-34

6

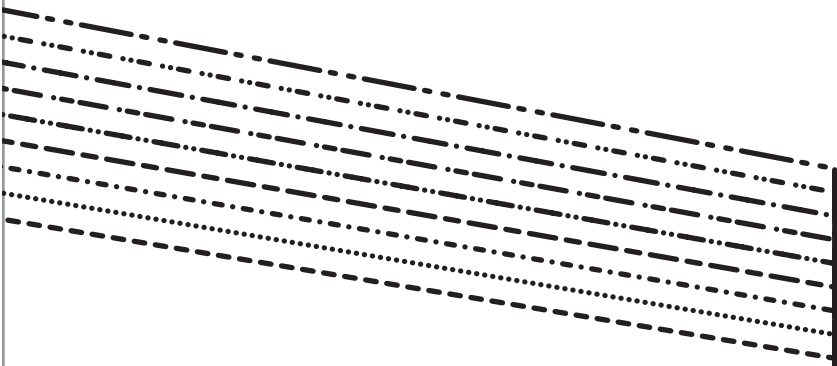
Long Sleeve

Cut 2 fabric



A 6

B 6

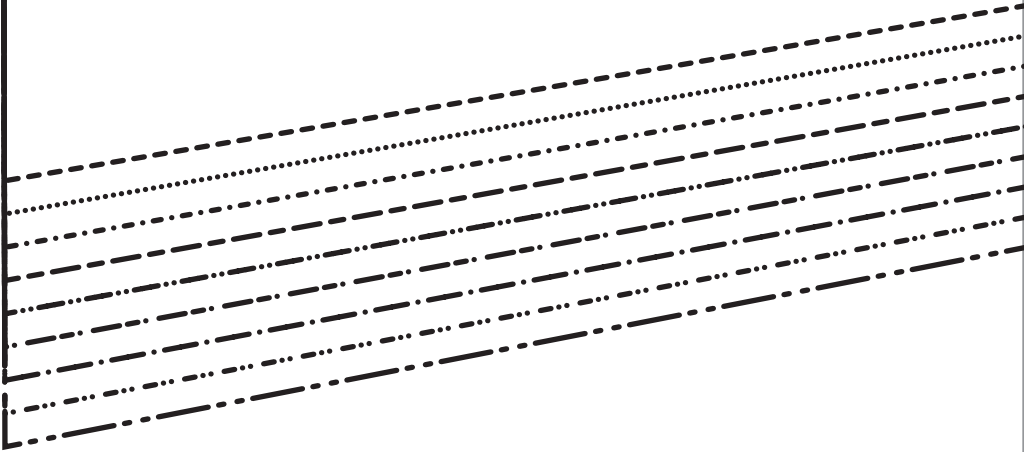


FOLD BACK THIS MARGIN

B 6

FOLD BACK THIS MARGIN

A 6



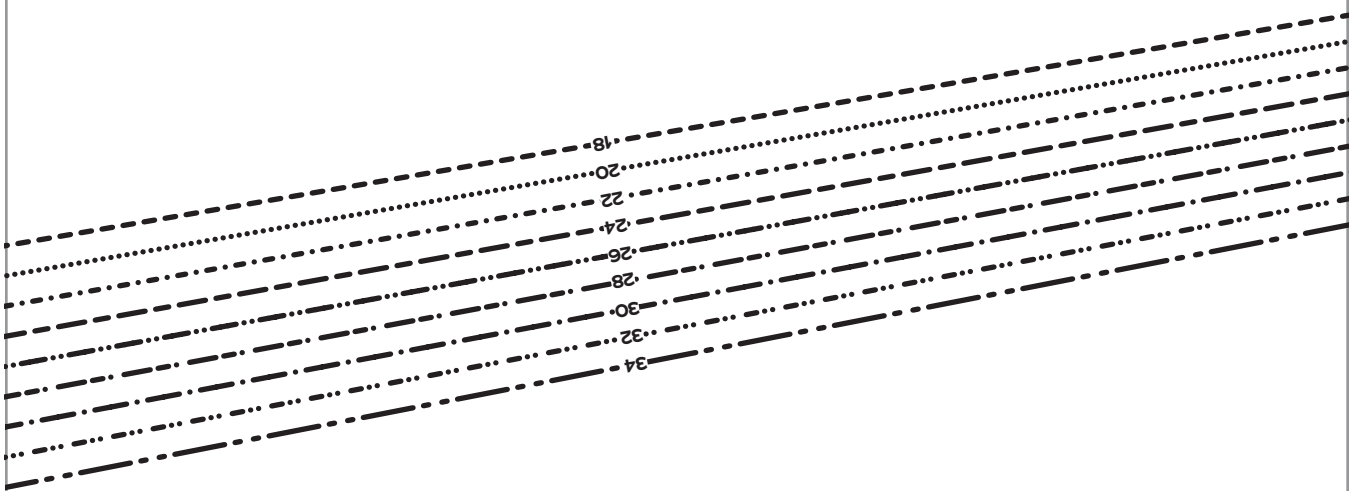
A 6

FOLD BACK THIS MARGIN

B 6

GRAINLINE

FOLD BACK THIS MARGIN

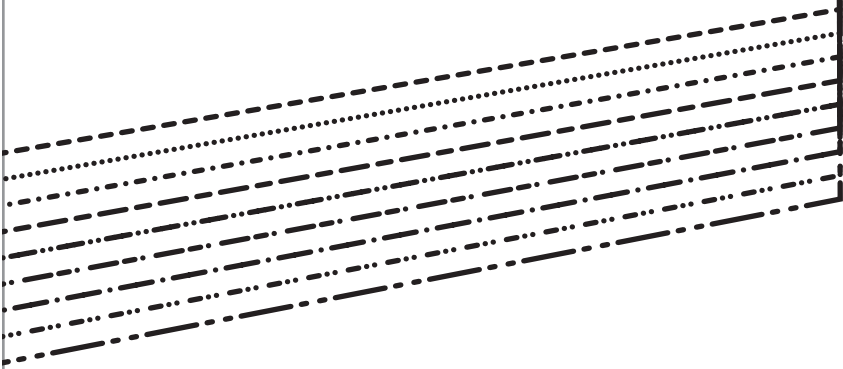


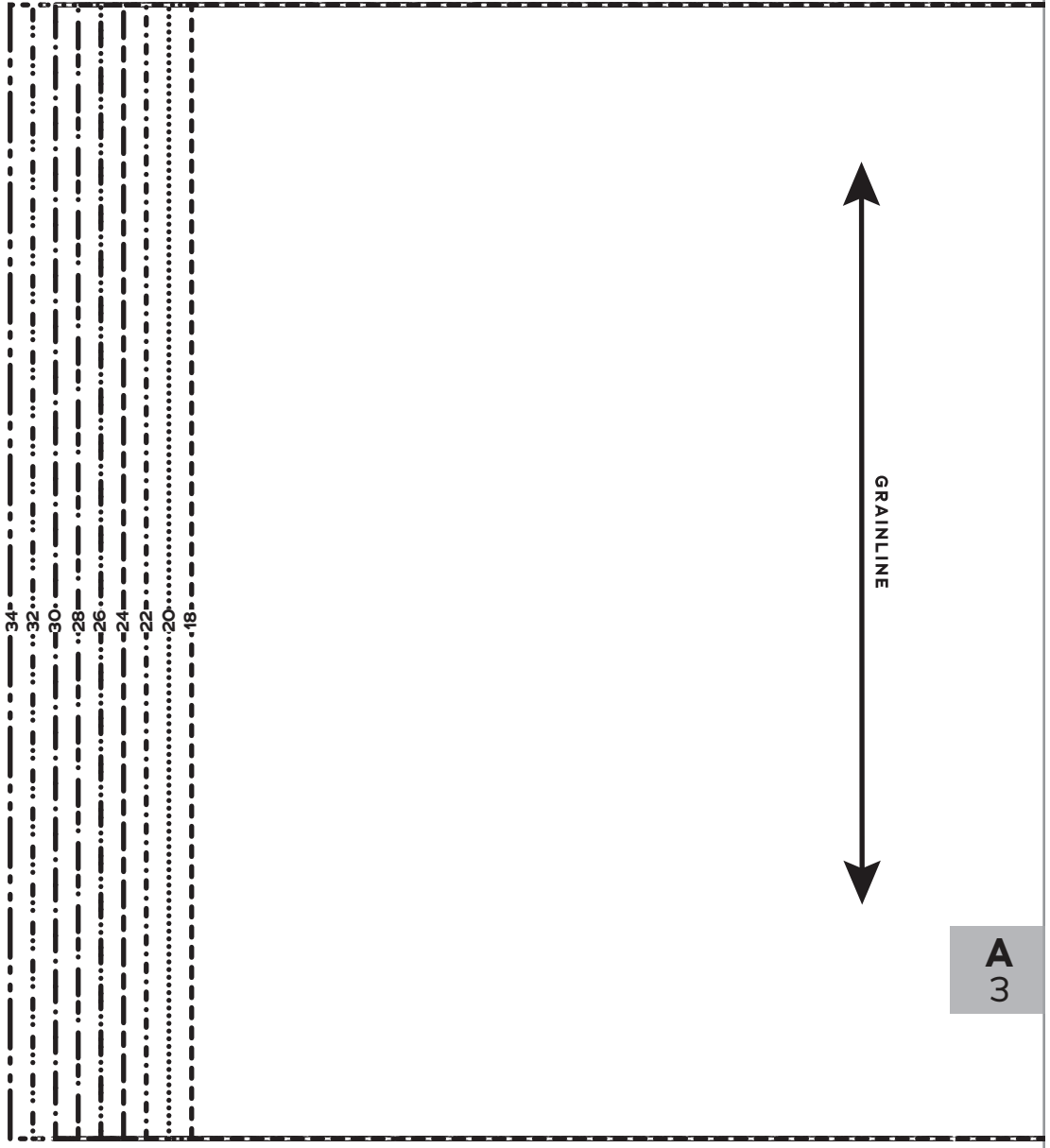
B 6

FOLD BACK THIS MARGIN



FOLD BACK THIS MARGIN





A
3



**MIDGE
BRETON
TOP**

SIZES 18-34

3

Three-Quarter
Sleeve Cuff

Cut 2 fabric

FOLD BACK THIS MARGIN

A
3

B
3



FOLD BACK THIS MARGIN

18
20
22
24
26
28
30
32
34

B
3

GRAINLINE

BUTTON



**MIDGE
BRETON
TOP**

SIZES 18-34

4

Three-Quarter
Sleeve
Cuff Tab

Cut 4 fabric