

PRODUCT INSTALLATION

DAZ INSTALL MANAGER (DIM)
METHOD

NOTE DAZ Install Manager is very fussy when it comes to filenames. Make sure the filenames are as they appear in the product description from either Deviant Art or my Patreon entries. Any change to the name ensures that DIM skips over them and they will not be seen inside DIM.

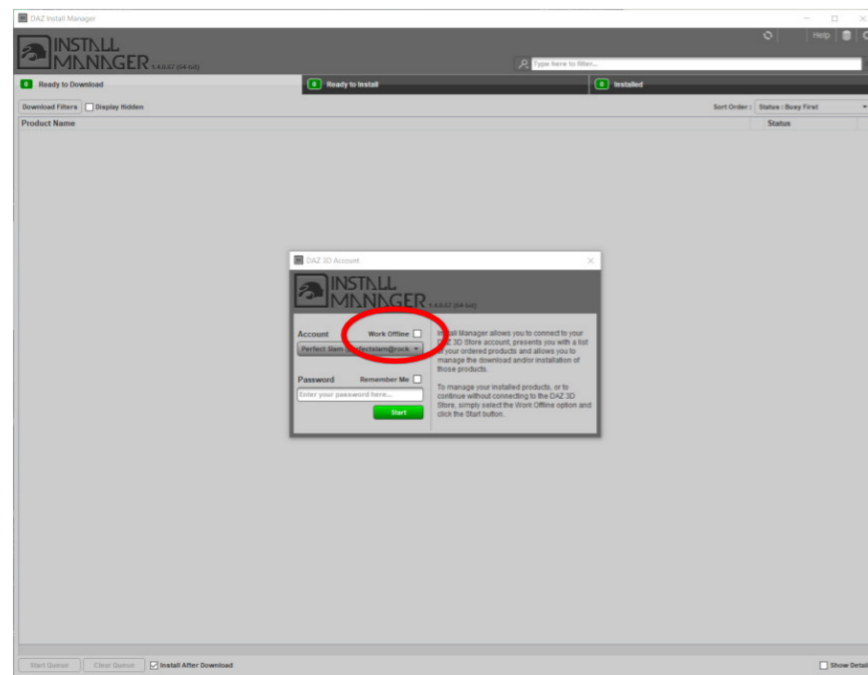
1 The first issue is getting a hold of the DAZ Install Manager. It appears that it is being phased out in favour of DAZ Central. Below are two links from DAZ3D:

Windows 10 (64-bit)

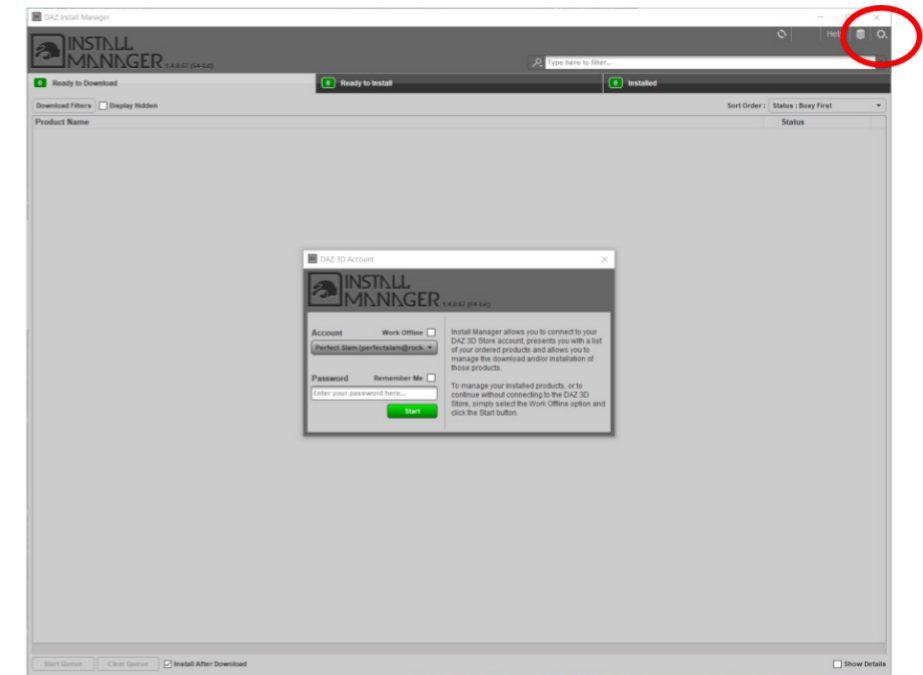
macOS (64-bit)

Download and install the program.

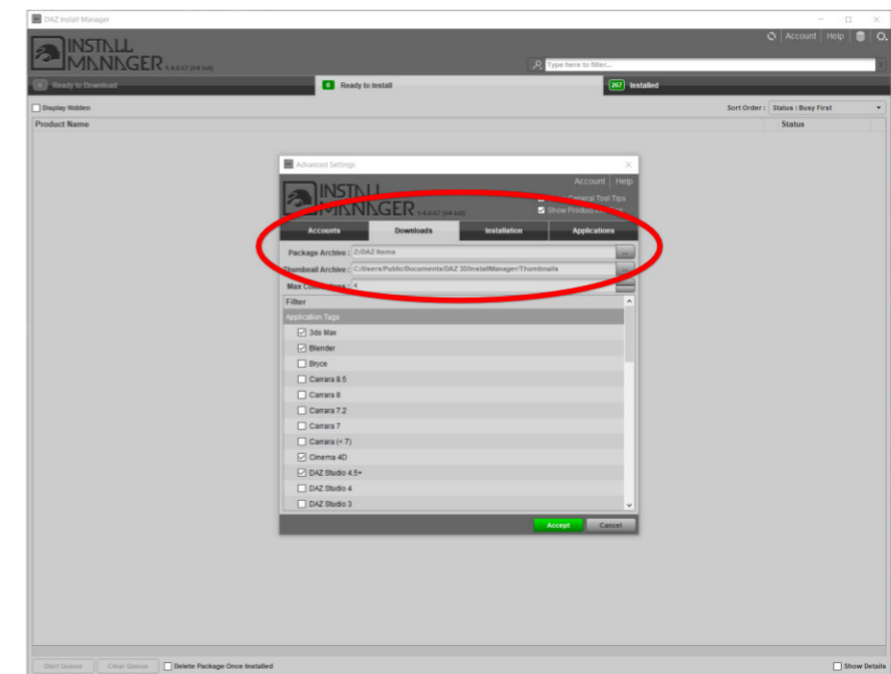
2 Run the installer, and check the box “Work Offline” (for quicker operation).



3 Next, go to the Advanced Settings (Gear icon in the upper right corner).



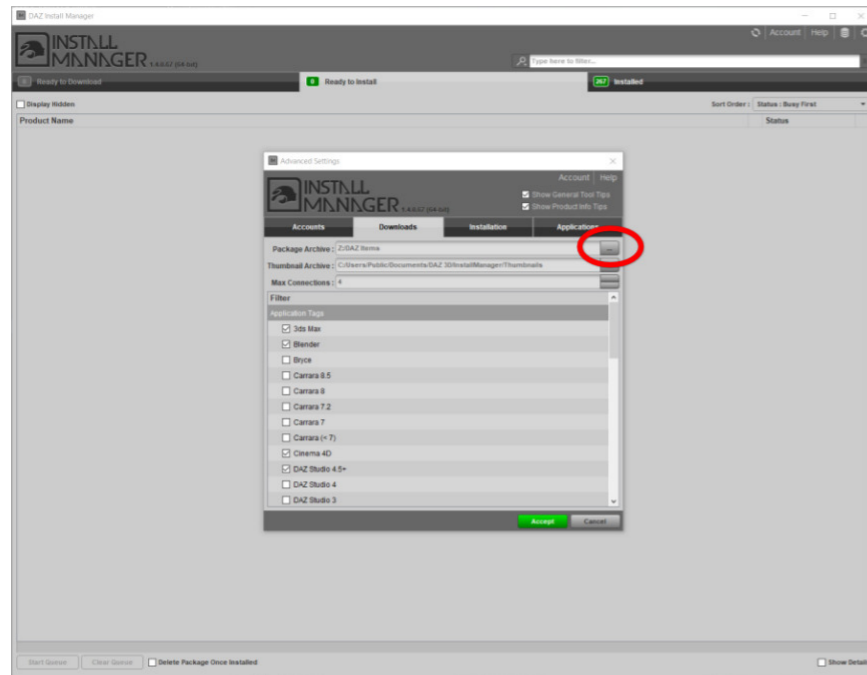
4 Go to the Downloads Tab and check the Package Archive location. This is where DIM will look for any downloaded DAZ Studio packages.



5

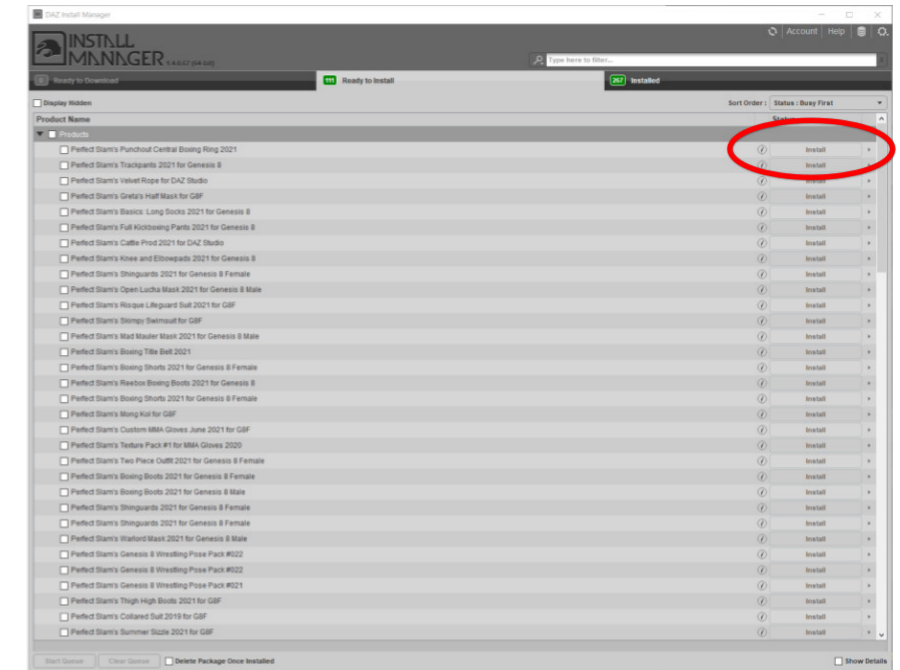
In the example, mine has been set to a folder on my NAS server on the network, but the default is usually set to the current user's Downloads folder.

If needed, click the three dots and change to where you regularly download files.



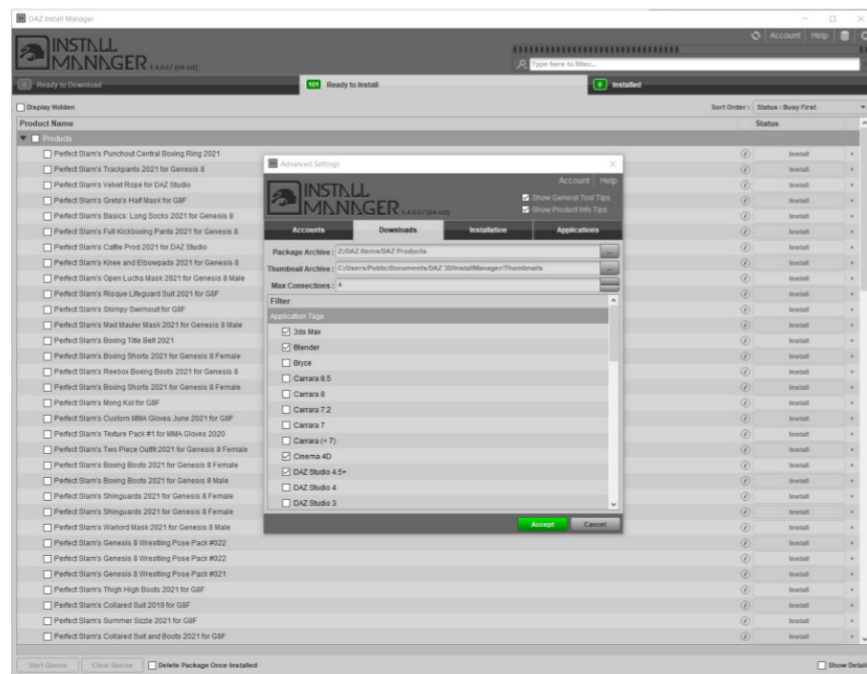
7

Once the processing is done, by either checking the box and creating an install queue (install multiple items at once), or individual installation by using the install option on each line.



6

Once it's been set, the list should autofill with any downloaded DIM-format files.



NOTES

- Selecting "Delete Package Once Installed" isn't recommended. Just move the ZIP file using Finder or Explorer to a safe place after it is installed.
- DIM goes through each properly named ZIP file it sees and creates an entry. It creates a DSX file for each the first time it sees a new entry. They can be safely deleted afterwards by Finder or Explorer.
- Note: My DIM files start with PS but unlike proper DAZ files, it doesn't add entries into the database, so each time you refresh the list, previously installed PS items will still appear if that ZIP file remains.
- DIM does have some logging information that could help identify errors.