

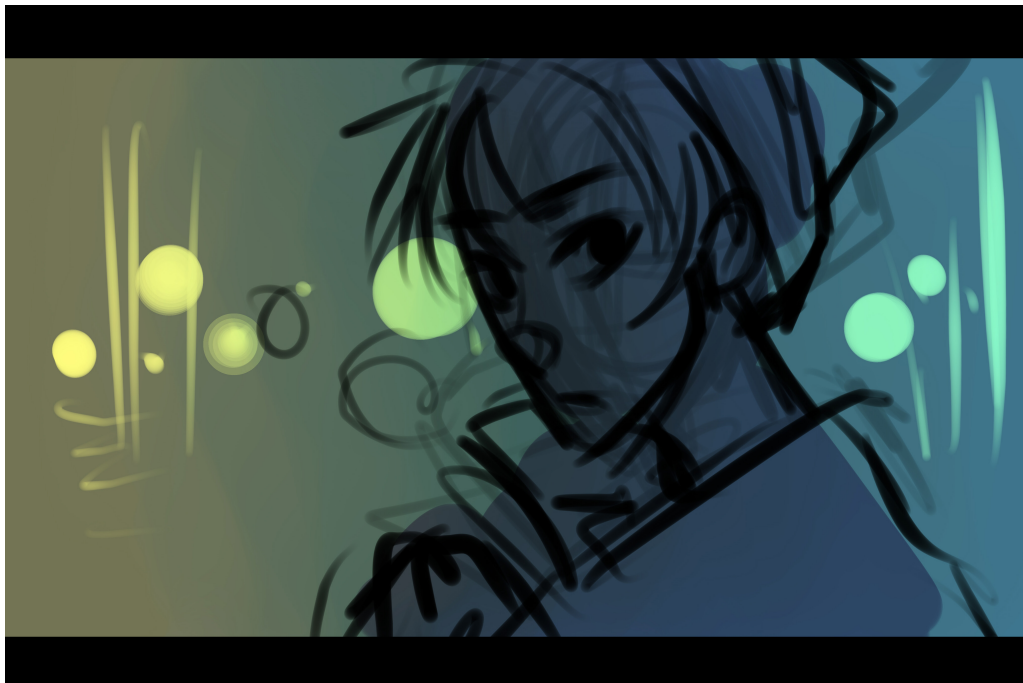


Step by Step



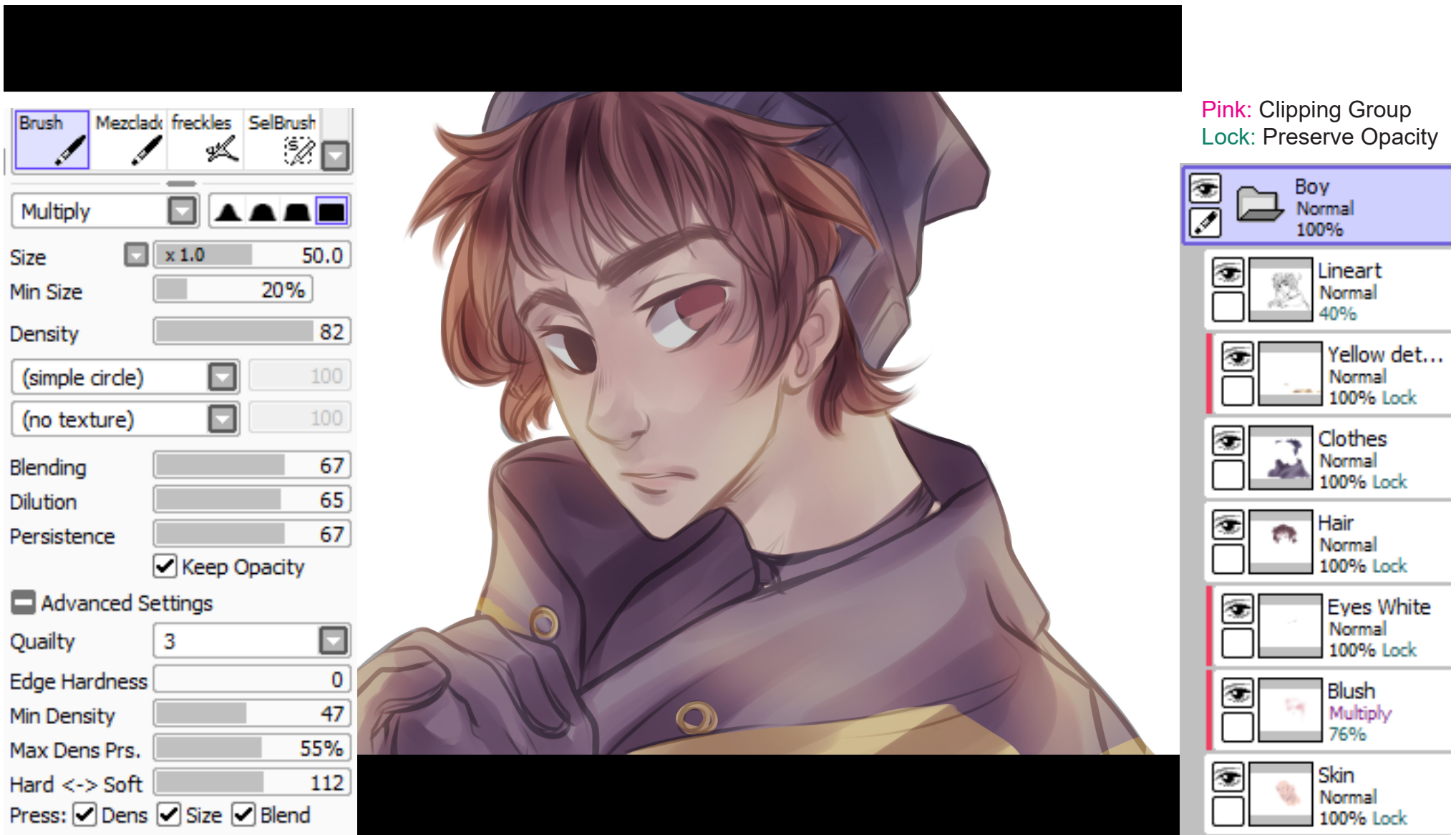
For this drawing I made two versions of base color. Of course, as you progress in coloring these colors are modified, but it is good to do tests to choose a general tone for the composition.

Keep in mind what you want to convey, the environment, the time of day, or simply, what you think you like most!

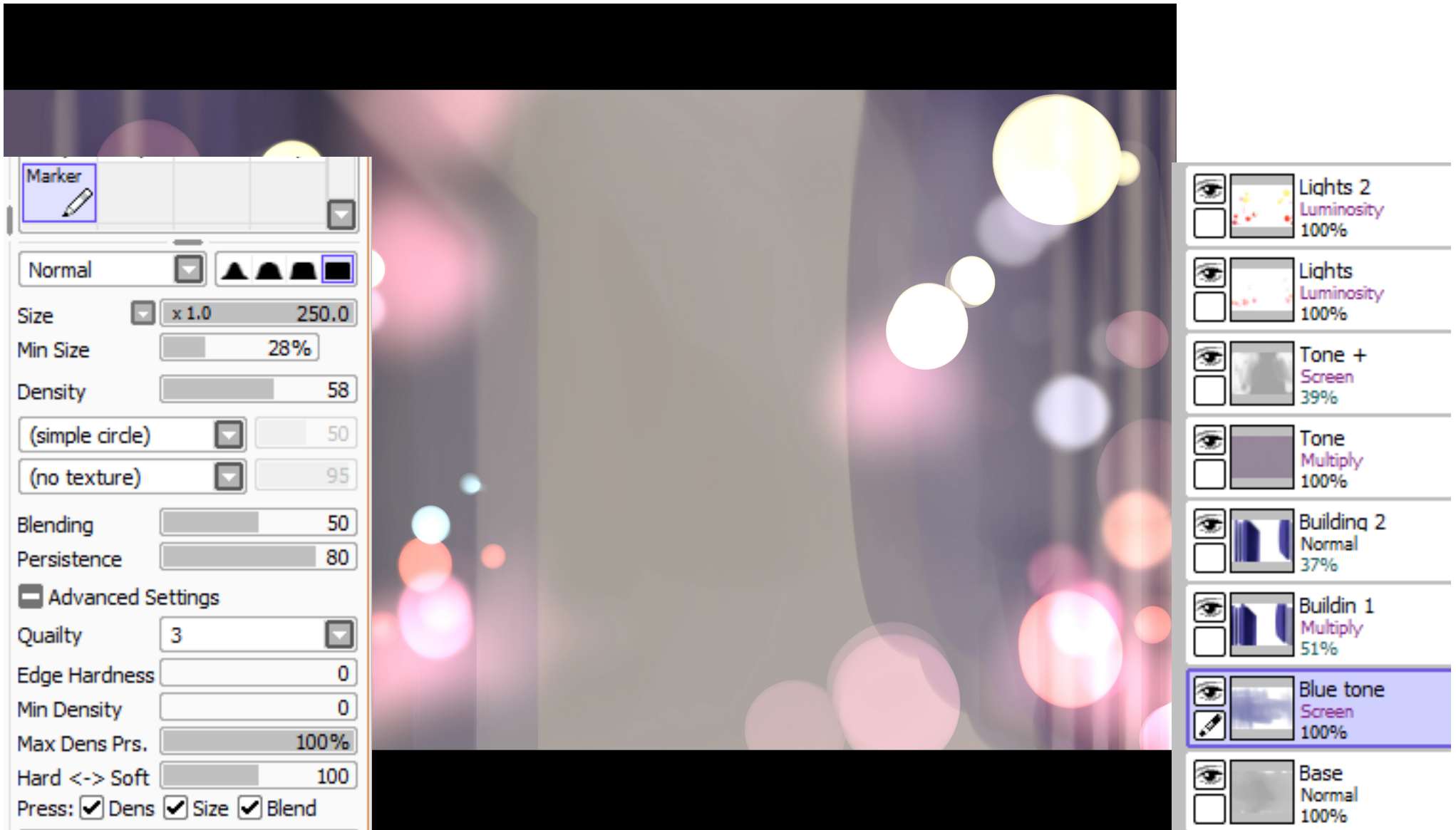




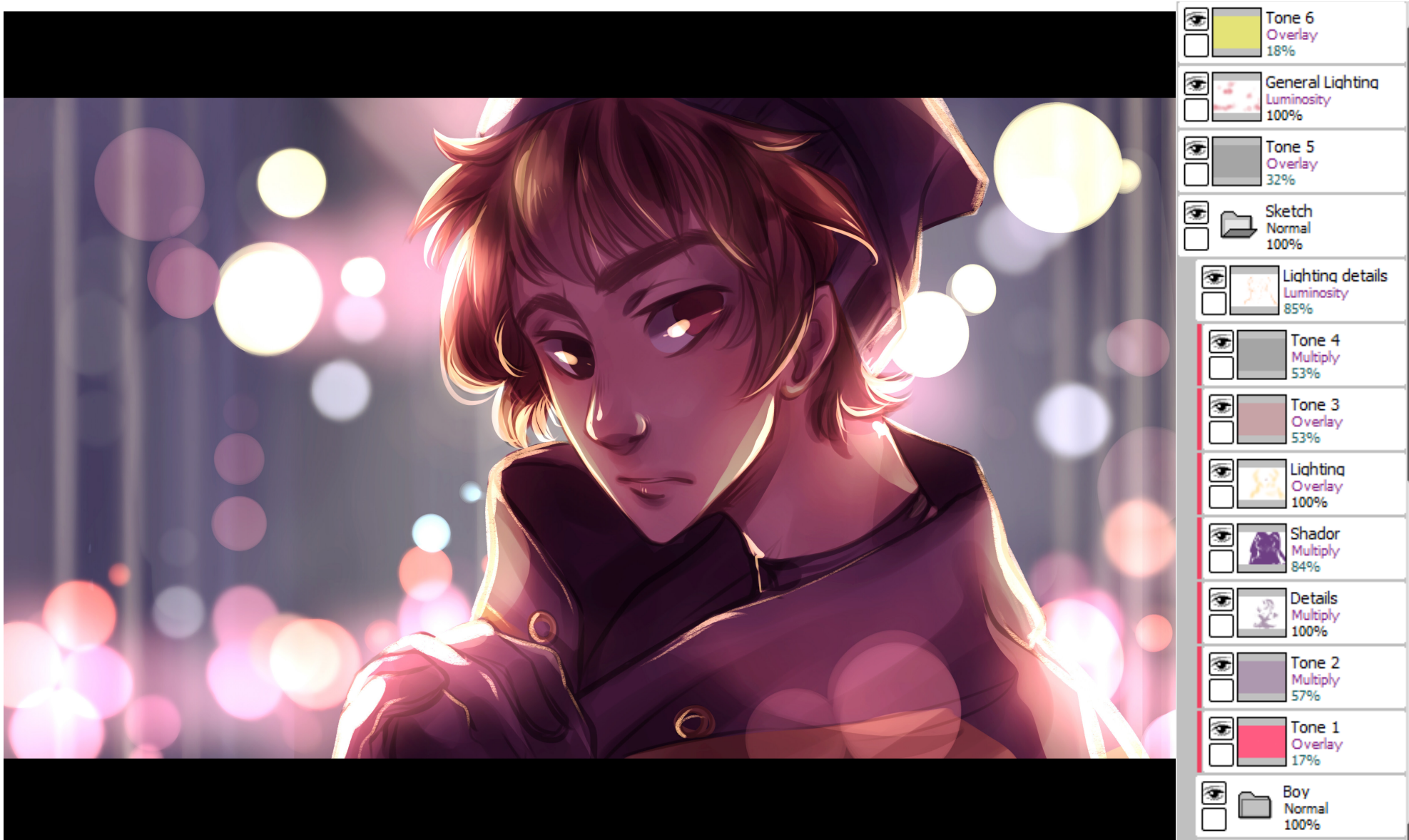
For this drawing I used the Ink pen (the same I used to ink in the previous drawings!), included all the parts of the linework in the same layer in order to change the opacity (40%). This way I won't have to change the color of the line in a new layer, since the soft grey will combine with the color base (a layer below lineart)



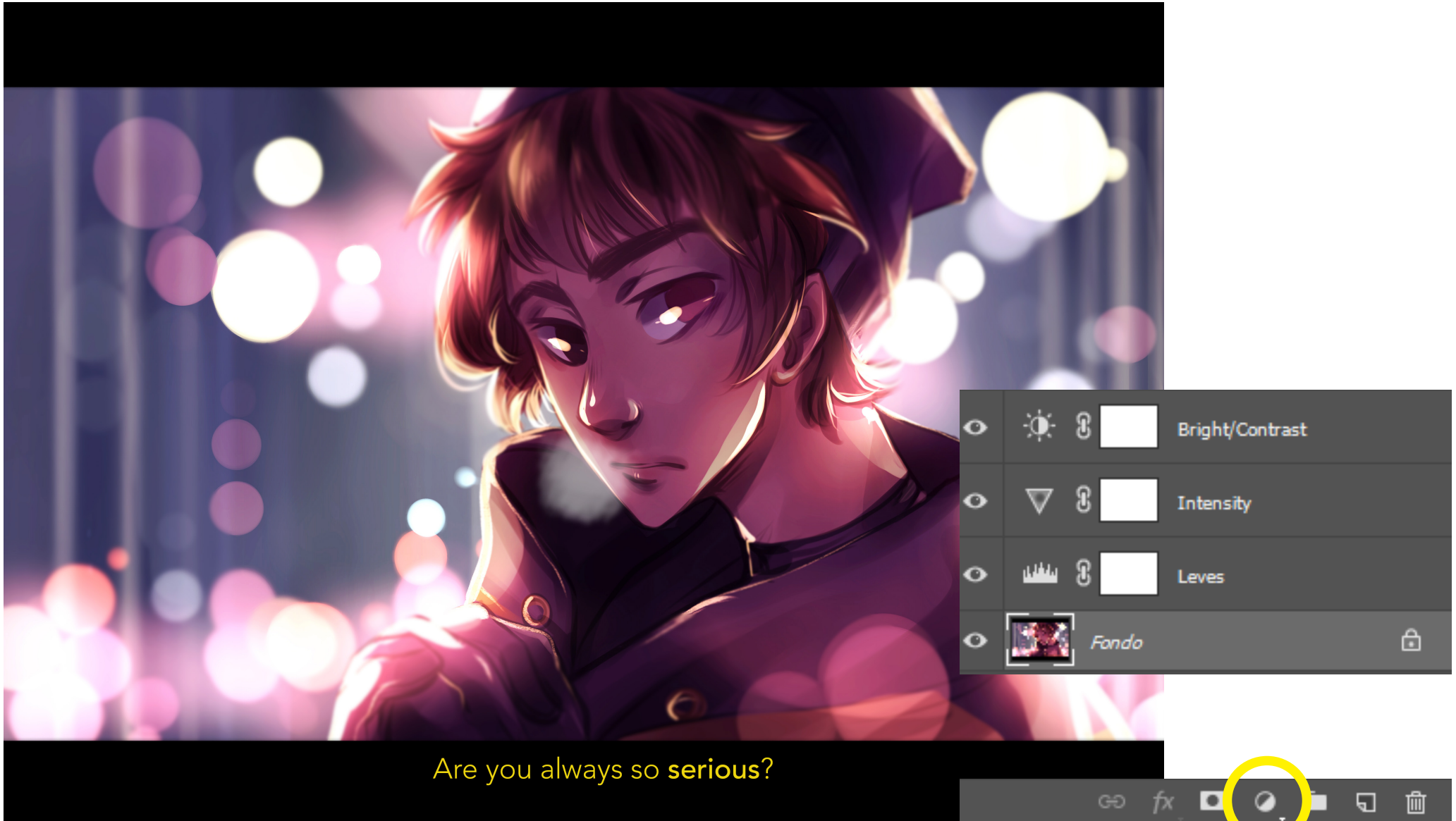
I paint by parts, each element has its particular layer. I feel more comfortable blending in the same layer with the Brush, instead of including a new layer in Multiply mode. I actually use this option when I want to add details or darker tones.



For the background I simply had to simulate some buildings. Keep in mind that sometimes a very detailed background can divert the attention of the protagonist (the character). For this I have used selection tools, and I have been adding layers to provide different shades. For the lights I used the marker that comes with the program by default.



Do not be afraid to do color tests and experiment with layer options.
For this particular drawing I used a lot of layers just to get a color to be happy with!



Are you always so serious?

I plan to do a tutorial on the Photoshop edition.
I always make corrections of color and luminosity with the **adjustment layers** (yellow)
(experimen with thist!)