



RTC - VISUAL GUIDE

DROWNING



THANK YOU PATRONS!

**Your financial support is the only reason why I'm able to
continue creating quality Road to Completion Guides.
All of you are truly the best!**

-Xonevant-



LEGEND

Press CTRL + F to pull up the search function. Copy or key in the letter (or) icon followed by a space, then an "*" (ex. Z *). You can easily pull up all the slides where that particular collectible can be found plus this is a great way to find things you might be missing.



Trophies (17)





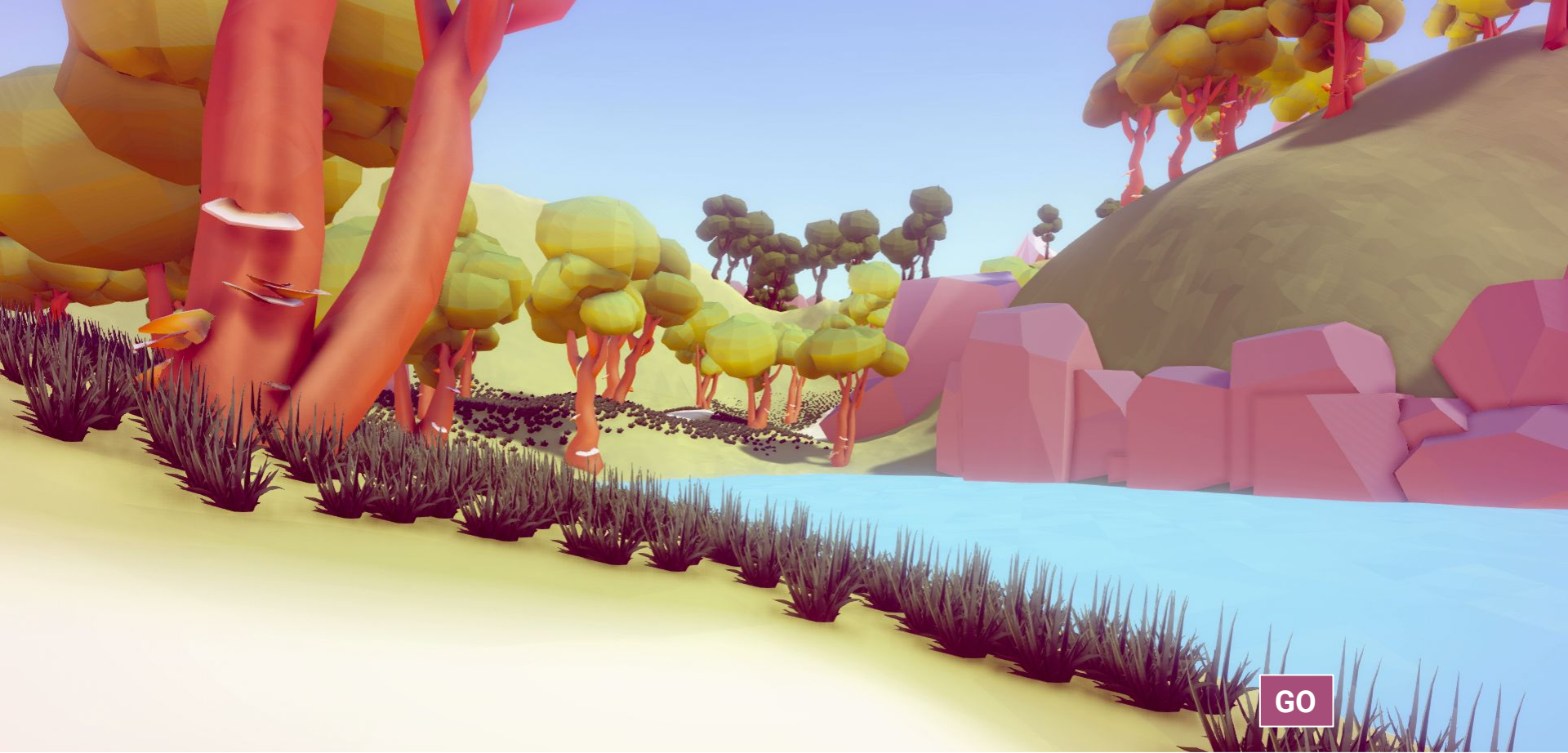
Drowning

New Game

 NEW GAME - Start a new game for the first time



TURN AROUND



GO

🏆 TIME TO COOL OFF - Try and swim in the pond in year 8

I hardly recognised you
were there



 GIFT BOX - Find the secret gift box



Resume

Skip this scene

Main Menu

I hardly recognised you
were there



But I was glad you were
gone

GO

🏆 SNOWMAN - Find the secret snowman

A stylized 3D forest scene with large, rounded trees and a path. The trees have thick, rounded canopies in shades of yellow and green, and trunks in shades of pink and red. The ground is a light brown path with small green plants. The sky is a pale blue.

But I was glad you were
Resume gone

Skip this scene

Main Menu



TURN AROUND



GO



🏆 CANDLE - Find the secret candle

A low-poly, stylized landscape with a path leading towards a 'GO' button. The path is composed of light green, low-poly tiles and is flanked by rows of dark green, spiky plants. In the background, there are large, angular, light blue structures that resemble buildings or mountains, all set against a bright, hazy sky. A red square button with the word 'GO' in white capital letters is centered on the path.

GO



GO

🏆 SECRET ENDING 1 - Finish the first secret ending

BOXOPHOBIC

kawetofe

Broken Vector

Stoolfeather Games

Mister Necturus

Music/Sound Effects

Marma

Platypus Control

Sound Phenomenon

Dizzy Duck Sound

[WATCH SHORT CREDITS](#)

A low-poly 3D landscape with stylized trees, a body of water, and a large rock formation. The scene is rendered in a soft, pastel color palette. The trees have rounded, blocky canopies and simple trunks. The water is a light blue, and the sky is a pale purple. A large, dark rock formation is on the right side of the frame. The overall aesthetic is clean and modern.

Drowning

Continue

New Game

NEW GAME



Resume

Skip this scene

Main Menu

SKIP YEARS 8, 9, 10



WALK BACK AND FORTH CLOSE TO THE EDGE OF THE BRIDGE

🏆 **DON'T FALL OFF!** - Try to fall off the bridge 10 times in year 11



Resume

Skip this scene

Main Menu

A 3D rendered landscape featuring a long, straight path that recedes into the distance. The path is flanked by rows of stylized, green grass tufts. In the background, a large, bright sun is setting or rising, creating a warm, golden glow that illuminates the sky and the path. The overall scene is peaceful and serene.

TURN AROUND

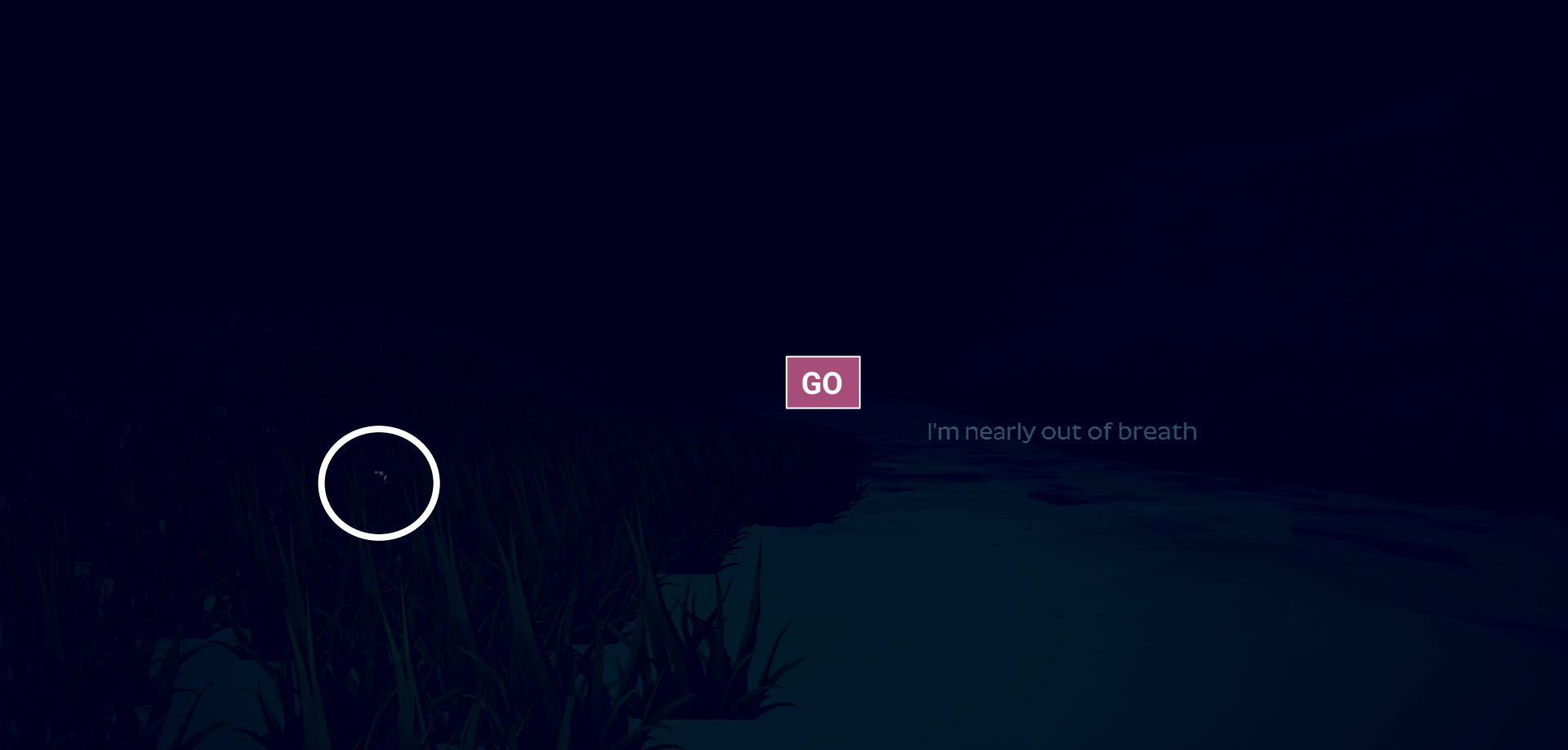


GO

 ROCK CLIMBER - Try to climb the large rock at the beginning of year 12

A 3D rendered landscape featuring a light-colored path that recedes into the distance. The path is flanked by green grass and small bushes. In the background, there are rolling hills under a clear blue sky. A red rectangular sign with the word "GO" in white capital letters is positioned in the middle of the path.

GO



GO

I'm nearly out of breath

 CANDY - Find the secret candy

Resume

Skip this scene

I'm nearly out of breath

Main Menu

A dark, stylized landscape with a path leading to a 'GO' button. The scene is rendered in shades of dark blue and black, with a path of light grey leading towards a row of dark, pointed shapes that resemble trees or mountains. A small, light-colored rectangular button with the word 'GO' in white capital letters is positioned in the center of the path.

GO



GO

Why?

 CHRISTMAS TREE - Find the secret ball on the Christmas tree

A dark, stylized forest scene with a hill in the foreground. In the background, there are several trees and a small cabin with a chimney. The scene is dimly lit, suggesting a dark forest.

2

GO

1

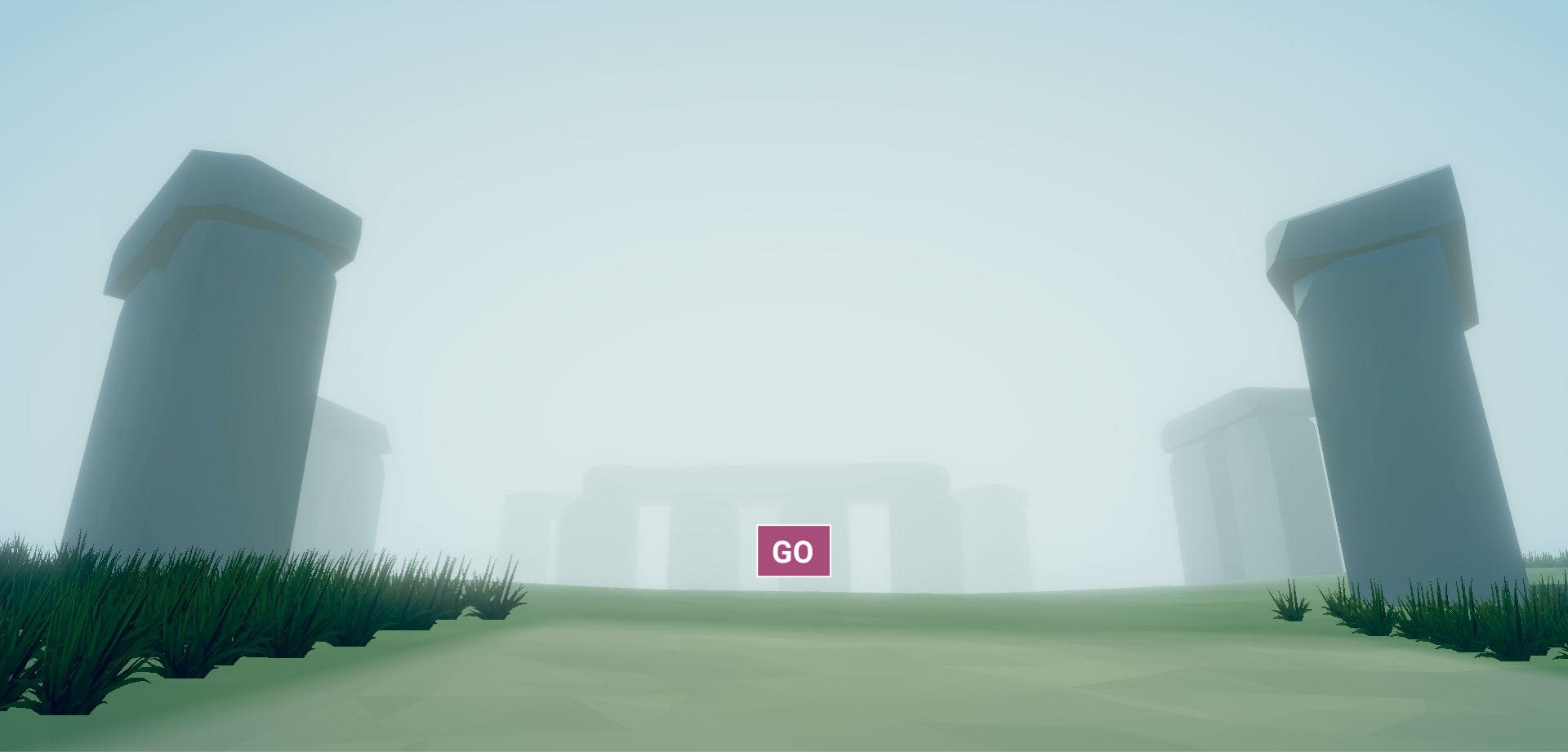
RUN TOWARD HILL UNTIL THE GAME STOPS YOU



MOUNTAIN GOAT - Try to climb the hill in the dark forest

A 3D rendered landscape featuring a long, straight path of green grass that recedes into the distance. The path is flanked by rows of grass on both sides. In the center of the path, there is a small, dark red rectangular sign with the word "GO" written in white, bold, uppercase letters. The background is a clear, light blue sky, and the overall scene has a clean, minimalist aesthetic.

GO



 SECRET ENDING 2 - Finish the second secret ending

BOXOPHOBIC

kawetofe

Broken Vector

Stoolfeather Games

Mister Necturus

Music/Sound Effects

Marma

Platypus Control

Sound Phenomenon

Dizzy Duck Sound

[WATCH SHORT CREDITS](#)



Drowning

Continue

New Game

NEW GAME



Resume

Skip this scene

Main Menu

SKIP YEARS 8, 9, 10, 11, 12, 13

GO





🏆 FINISH THE GAME - Finish the game's main ending

BOXOPHOBIC

kawetofe

Broken Vector

Stoolfeather Games

Mister Necturus

Music/Sound Effects

Marma

Platypus Control

Sound Phenomenon

Dizzy Duck Sound

[WATCH SHORT CREDITS](#)

A low-poly 3D landscape with a path leading through a field of tall grass. In the background, there are several green, rounded trees and a mountain range under a blue sky. The scene is rendered in a stylized, blocky aesthetic.

Drowning

Continue

New Game

CONTINUE

GO



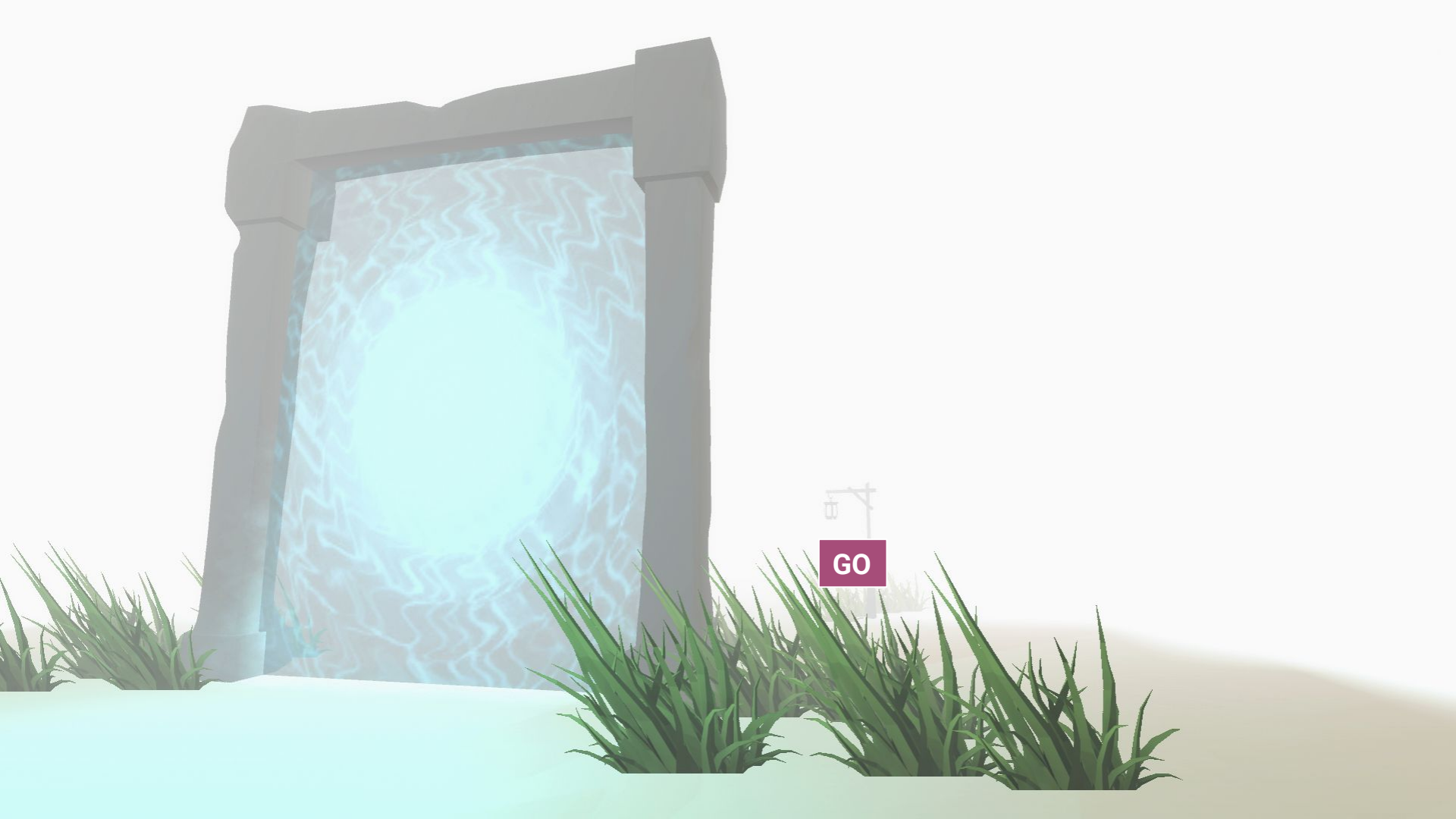


GO

You drove me to the point of
insanity

You did this to me





GO



GO



A dark, atmospheric night scene featuring a campfire in the center. Four people are sitting on logs around the fire, which provides the primary light source. A purple square with the word "GO" in white is overlaid on the fire. The background is a deep, dark blue, and a soft yellow glow is visible on the right side of the frame.

GO

BOXOPHOBIC

kawetofe

Broken Vector

Stoolfeather Games

Mister Necturus

Music/Sound Effects

Marma

Platypus Control



SECRET ENDING 3 - Finish the third secret ending

ALL ENDINGS COMPLETE - Find and complete all the game endings

DROWNING PLATINUM - Good job! Completed all tasks!

CONGRATULATIONS! CHECK OUT MORE ROAD TO COMPLETION GUIDES!

- ▶ CONTROL - <http://bit.ly/RTC-Control>
- ▶ DARK SOULS 3 - <http://bit.ly/RTC-DarkSouls3>
- ▶ MIDNIGHT DELUXE - <http://bit.ly/RTC-MidnightDeluxe>
- ▶ NUBLA & THE WORLD OF NUBLA - <http://bit.ly/RTC-Nubla>
- ▶ SEA OF SOLITUDE - <http://bit.ly/RTC-SeaofSolitude>
- ▶ UNCHARTED: DRAKE'S FORTUNE REMASTERED - <http://bit.ly/RTC-Uncharted>

