

Step by Step

April 2020

Sketch



Sometimes it's nice to go out from your comfort zone and try something a bit different, like an illustration with background, and with a different angle.

It was really helpful to represent how I wanted the lighting in this drawing, adding a multiply layer over the sketch and erasing the lighting areas.

Sketch

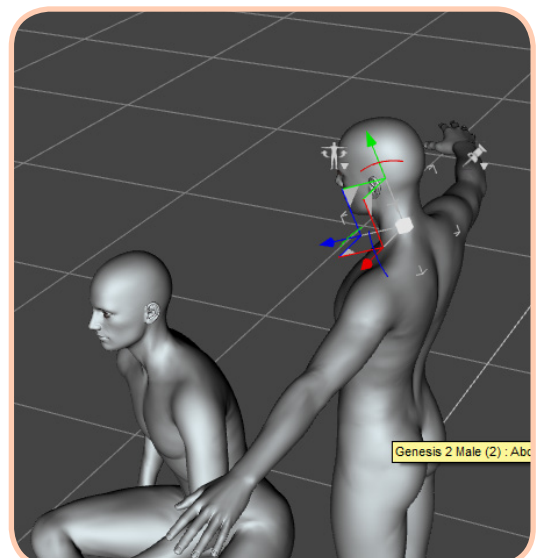


For this doodle I decided to use different tools.

The perspective guides of Procreate helped me to have that spacil view I needed. The horizont line is diagonal here, which makes the composition a bit harder!

I also used DAZ studio male models to correct possible mistakes in anatomy.

And finally, for the background, I searched some villages on Pinteres to get some inspiration.



Lineart



I separate the foreground from the background in different layers.

In addition, I try to do the lines in the first character thicker to get a sense of closeness!

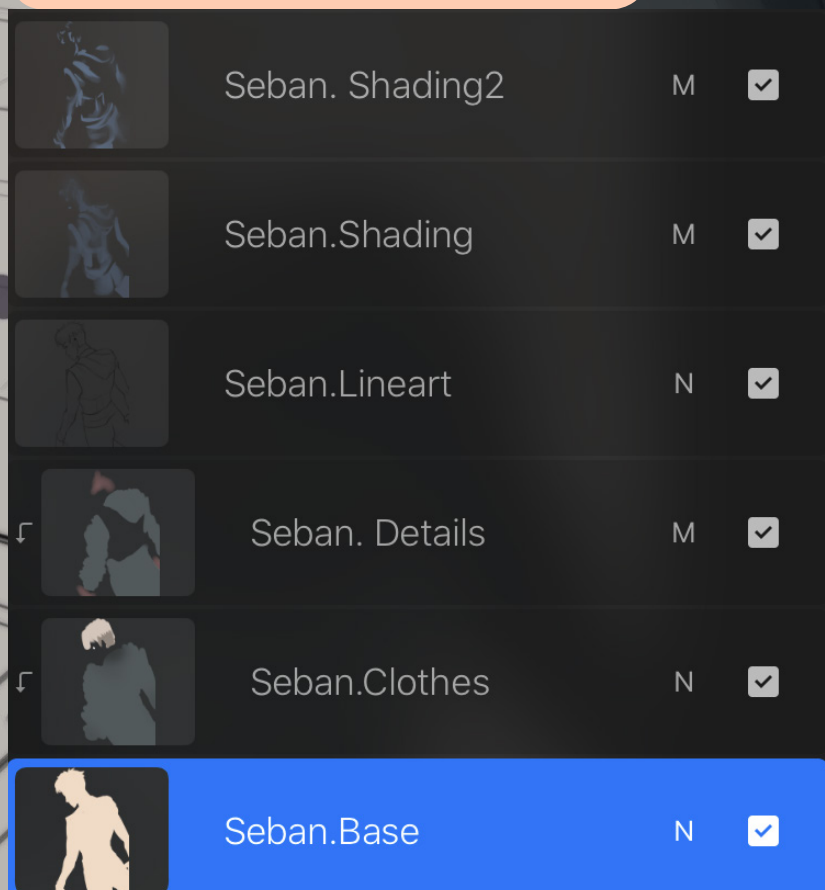
I used the Drawing Assistant of Procreate to make the lines perfectly straight considering the vanishing points defined with the perspective guide.

Coloring

You already know my process from previous Step by Steps!

I create a base color layer (normally for the skin tone) and then I add different layers as masks, painting different elements. This is always under the lineart. Over it, I add some layers in multiply mode to add the shading.

For this illustration the shadows were done with a dark blue, since that was the color I wanted to use for the background too!



Coloring



I repeat the process for the background, separating the different elements in several layers, and finally, adding a dark blue layer in multiply mode.

Coloring

The background illustration is a dark, monochromatic scene in shades of blue and grey. It depicts a young man with spiky hair and freckles, seen from the back, looking towards a woman in a dark dress and blue mask in a city street at night. The man's back is the focus of the coloring tutorial. The woman is in the background, and the street is filled with buildings and some foliage.

I add a new layer with the same blue to darken all the illustration.

As I defined in the sketch, the lighting will “hit” the guy’s back, so I proceed to erase that area!

Color Edition

I experimented with the general tone of the illustration. I used an overlay layer with a more pink tone to change the color of the image, turning it into a purple!



Lighting



For me, adding the lighting effects is always the most challenging but fun and creative step!

I start using the Airbrush, adding a red color in the lighting areas!

Lighting

I like to highlight the edges, to do this, I use a sharper pen and do the lines in different zones. As you can appreciate, I vary the width of the line to make it more dynamic.

I use an Add mode layer for this.



Edition

Once I end with the lighting, I save the file in PNG.

I open it again in the same document and I apply some editions.

First, I play with the Color Balance and the Curves, and after it, I duplicate the layer.

I apply a Gaussian Blur in this new layer, and then, with the airbrush, I erase the areas I want the viewer pay attention to! This is a way to give the images a softer touch!

