

CHARM PATTERNS






SWEETHEART SLIP

Sizes 2-20

PATTERN SIZE KEY

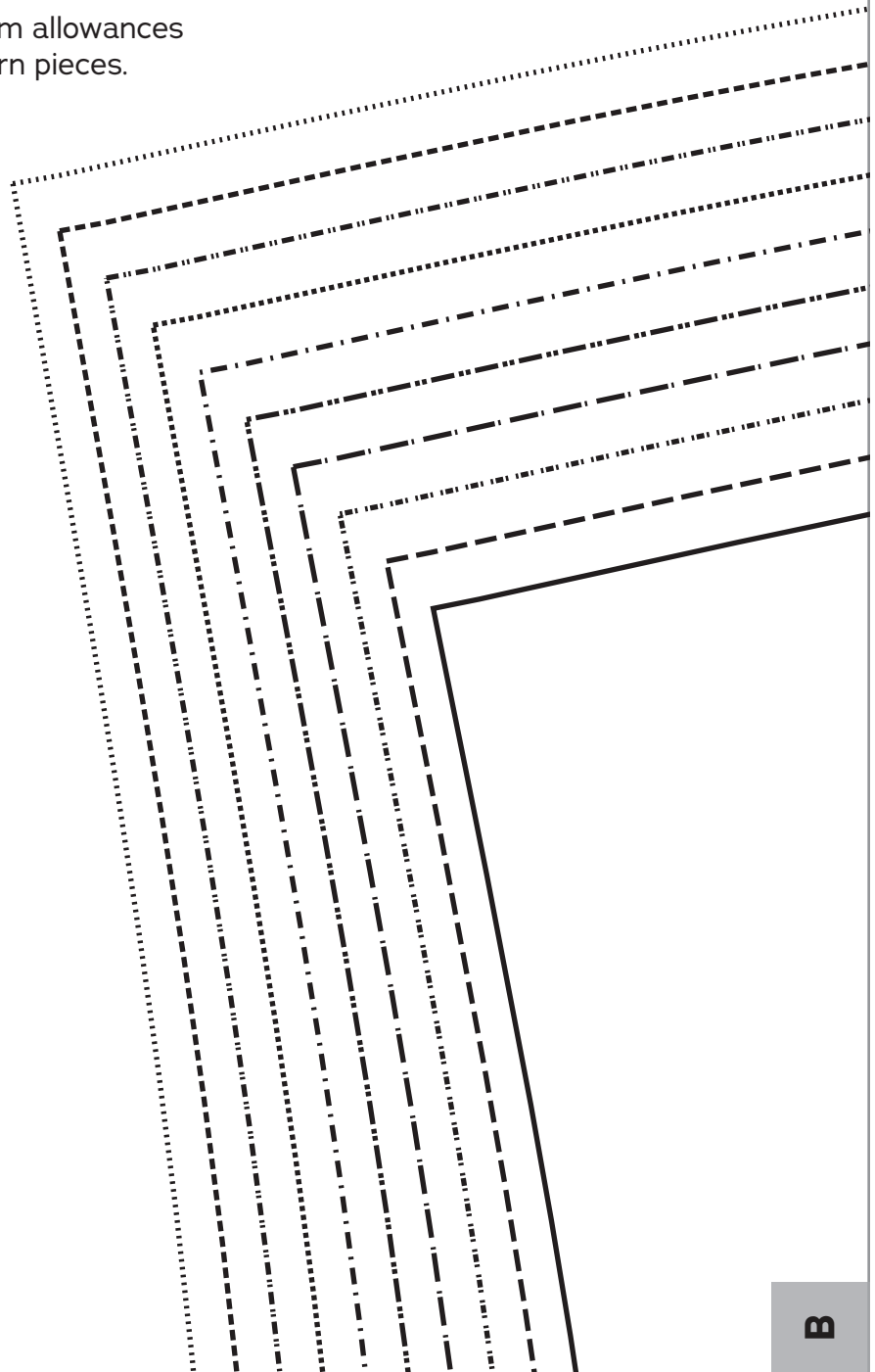
- 2 —————
- 4 - - - - -
- 6 ······
- 8 - · - · - ·
- 10 - · - · - ·
- 12 - · - · - ·
- 14 ······
- 16 - · - · - ·
- 18 - · - · - ·
- 20 ······

SYMBOL KEY

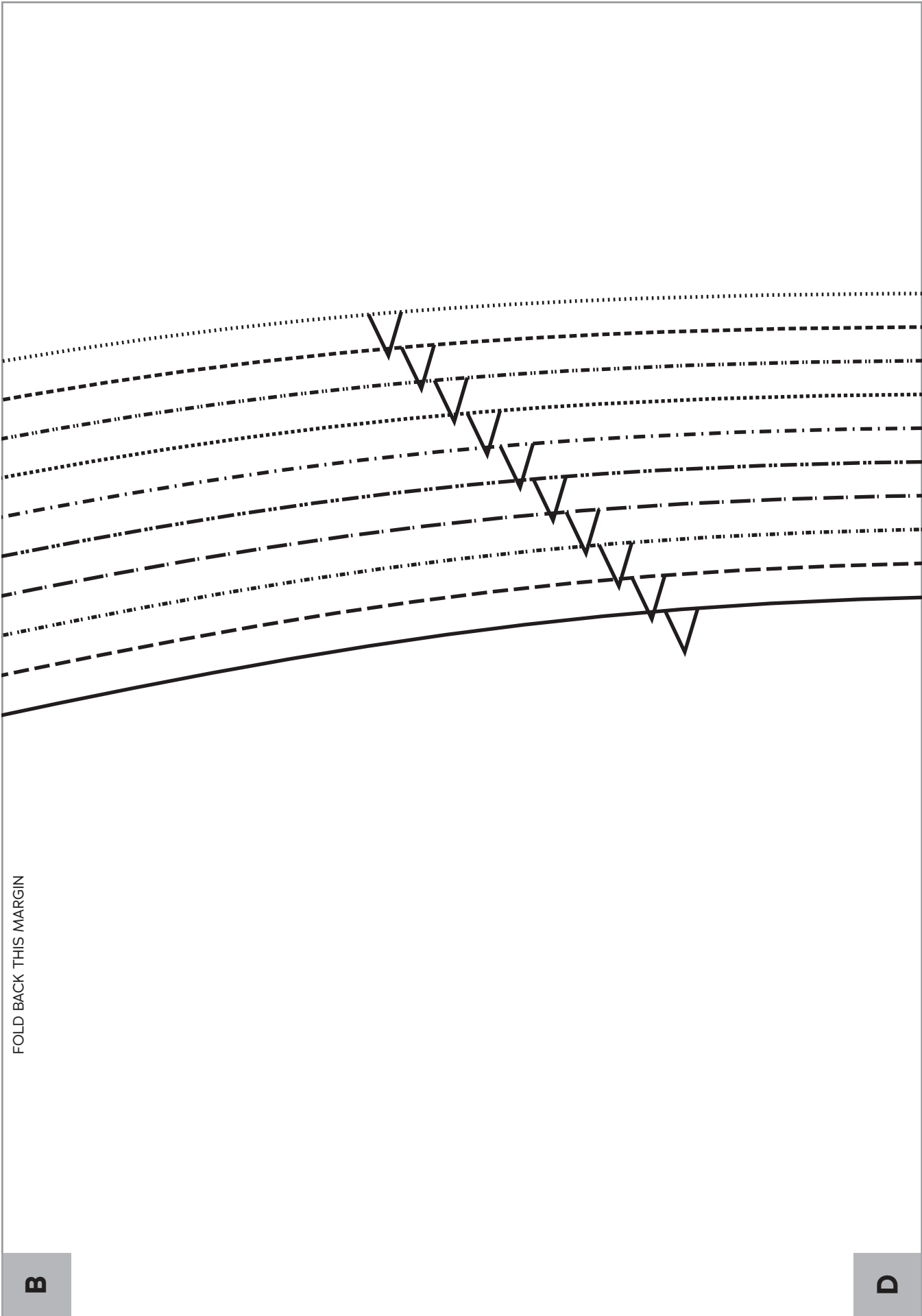
- grainline arrow 
- match point 
- placement mark 

5/8 inch (in) (1.5 cm) seam allowances are included on all pattern pieces.

1" test square



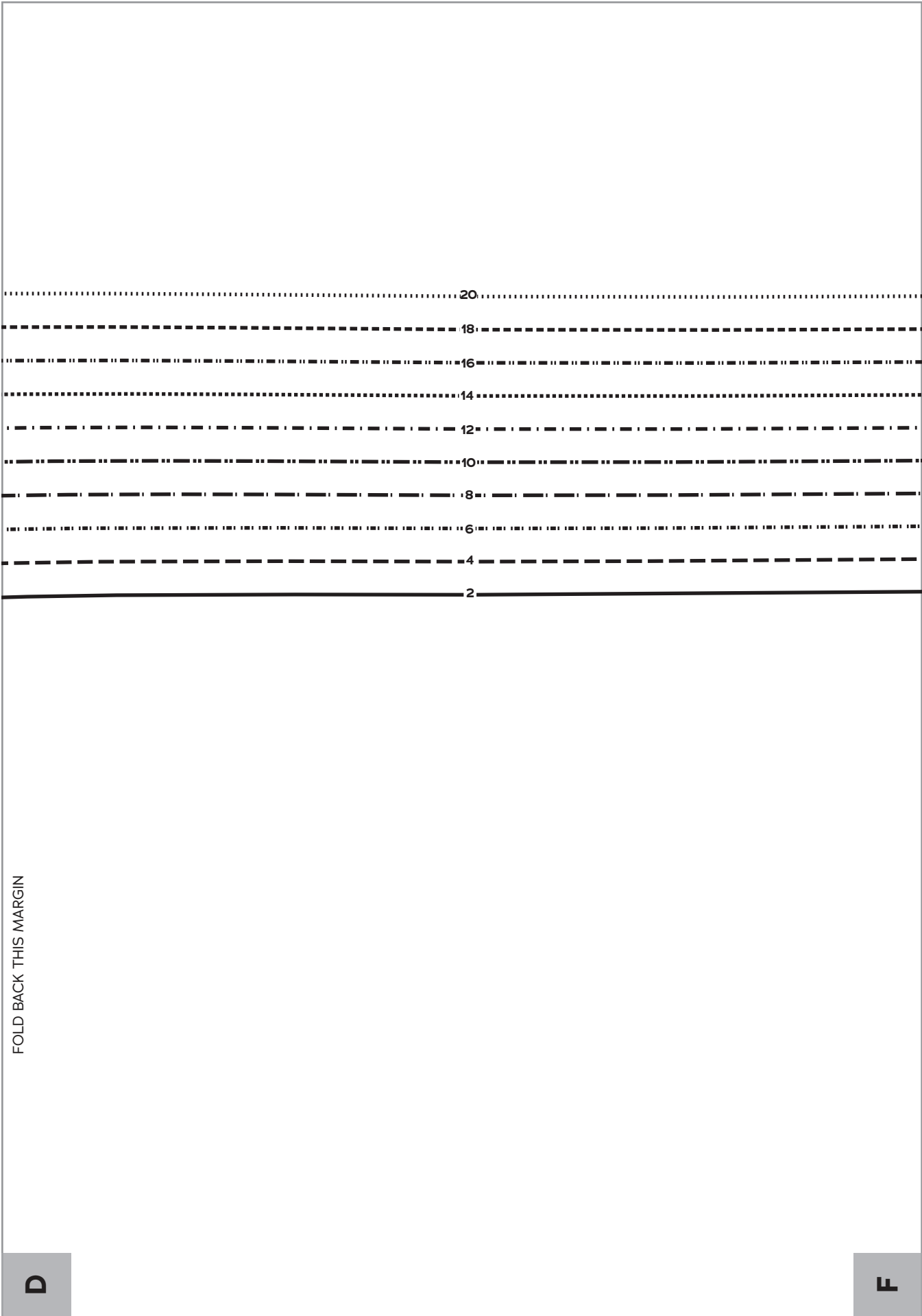
B



FOLD BACK THIS MARGIN

B

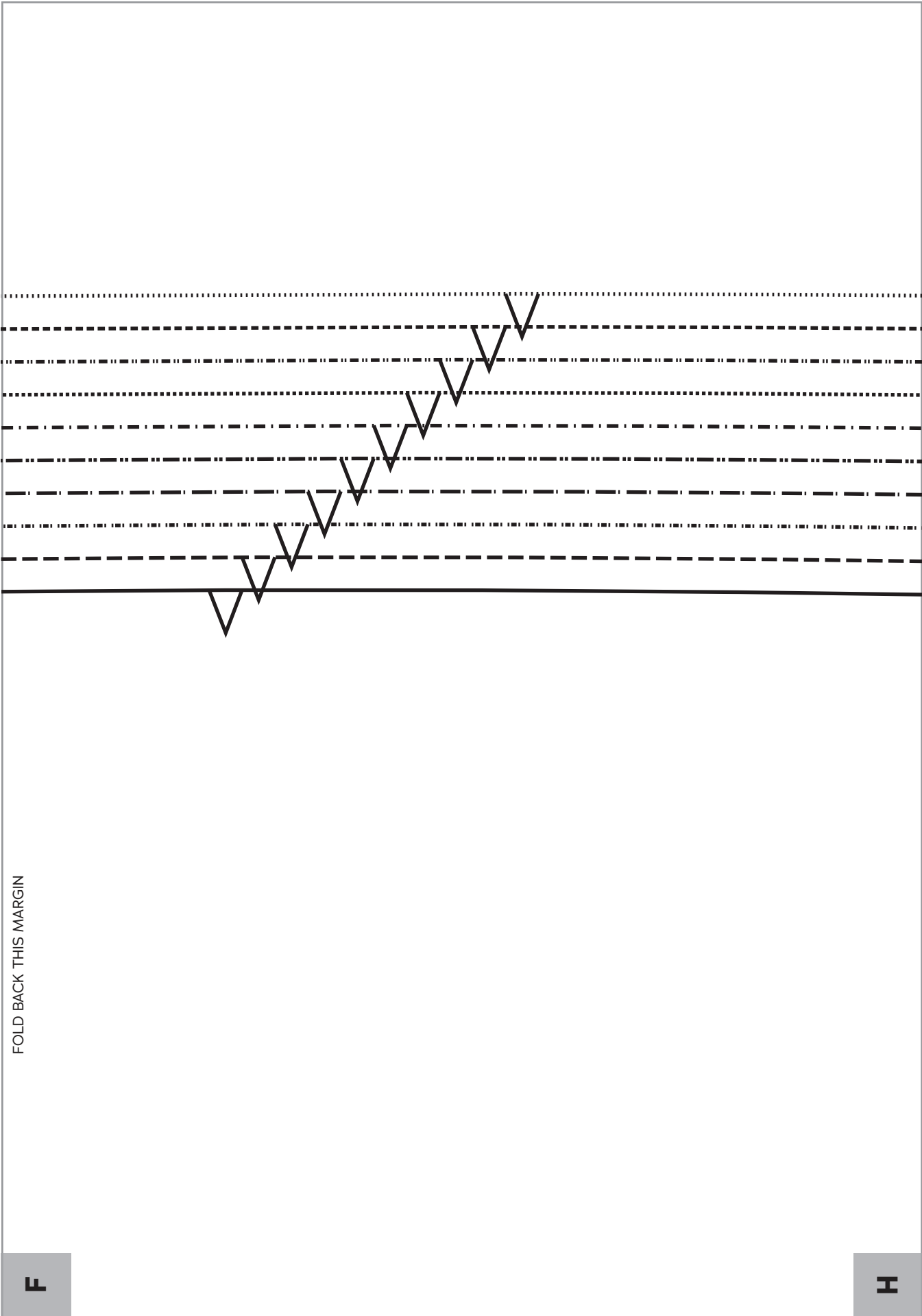
D



FOLD BACK THIS MARGIN

D

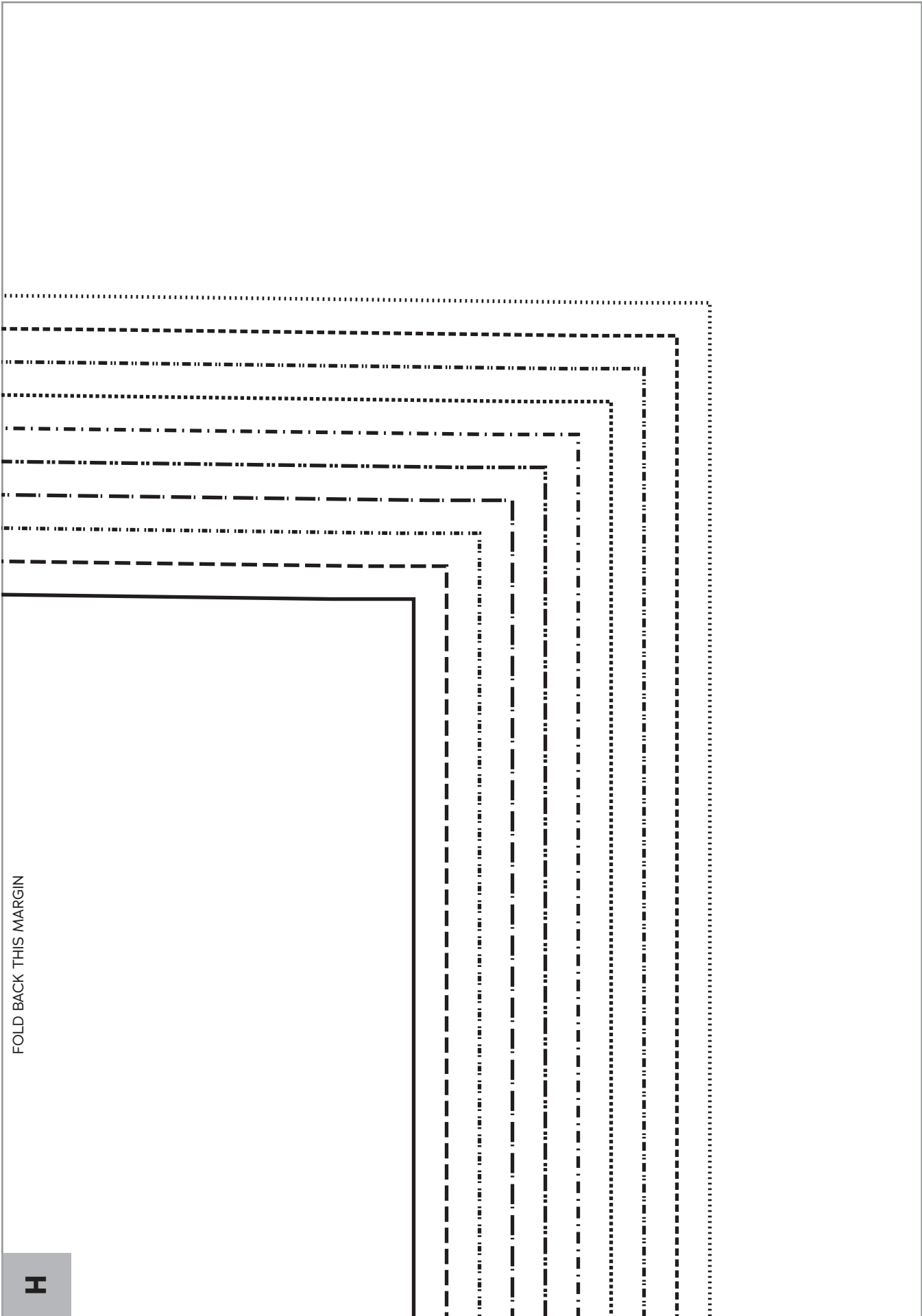
F



FOLD BACK THIS MARGIN

F

I



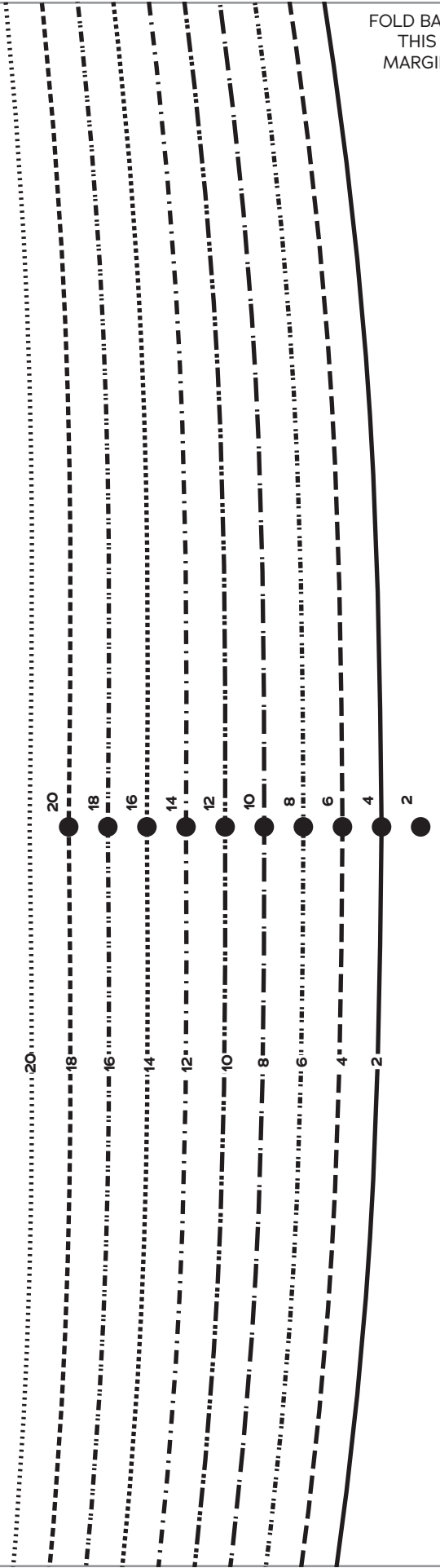
FOLD BACK THIS MARGIN

H

B

FOLD BACK
THIS
MARGIN

CENTER FRONT/BACK



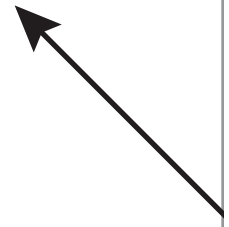
A

FOLD BACK THIS MARGIN

FOLD BACK THIS MARGIN

B

D



SWEETHEART SLIP

Slip Front & Back

Cut 1 fabric using Front grainline direction

Cut 1 fabric using Back grainline direction

A

C

FOLD BACK THIS MARGIN

D

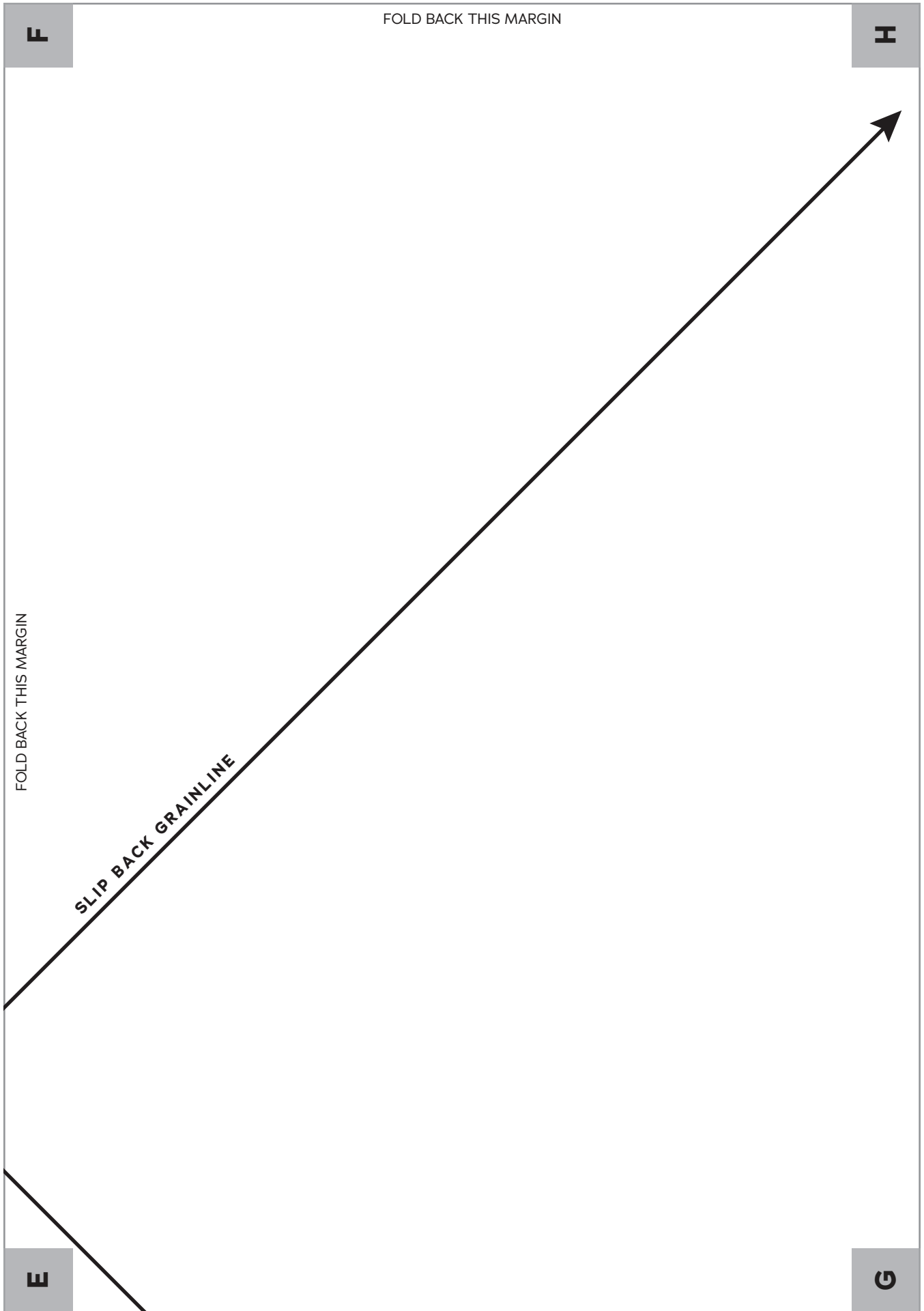
F

FOLD BACK THIS MARGIN

SLIP FRONT GRAINLINE

C

E



FOLD BACK THIS MARGIN

F

H

FOLD BACK THIS MARGIN

SLIP BACK GRAINLINE

E

G

H

FOLD BACK THIS MARGIN

FOLD BACK THIS MARGIN

G

2

4

6

8

10

12

14

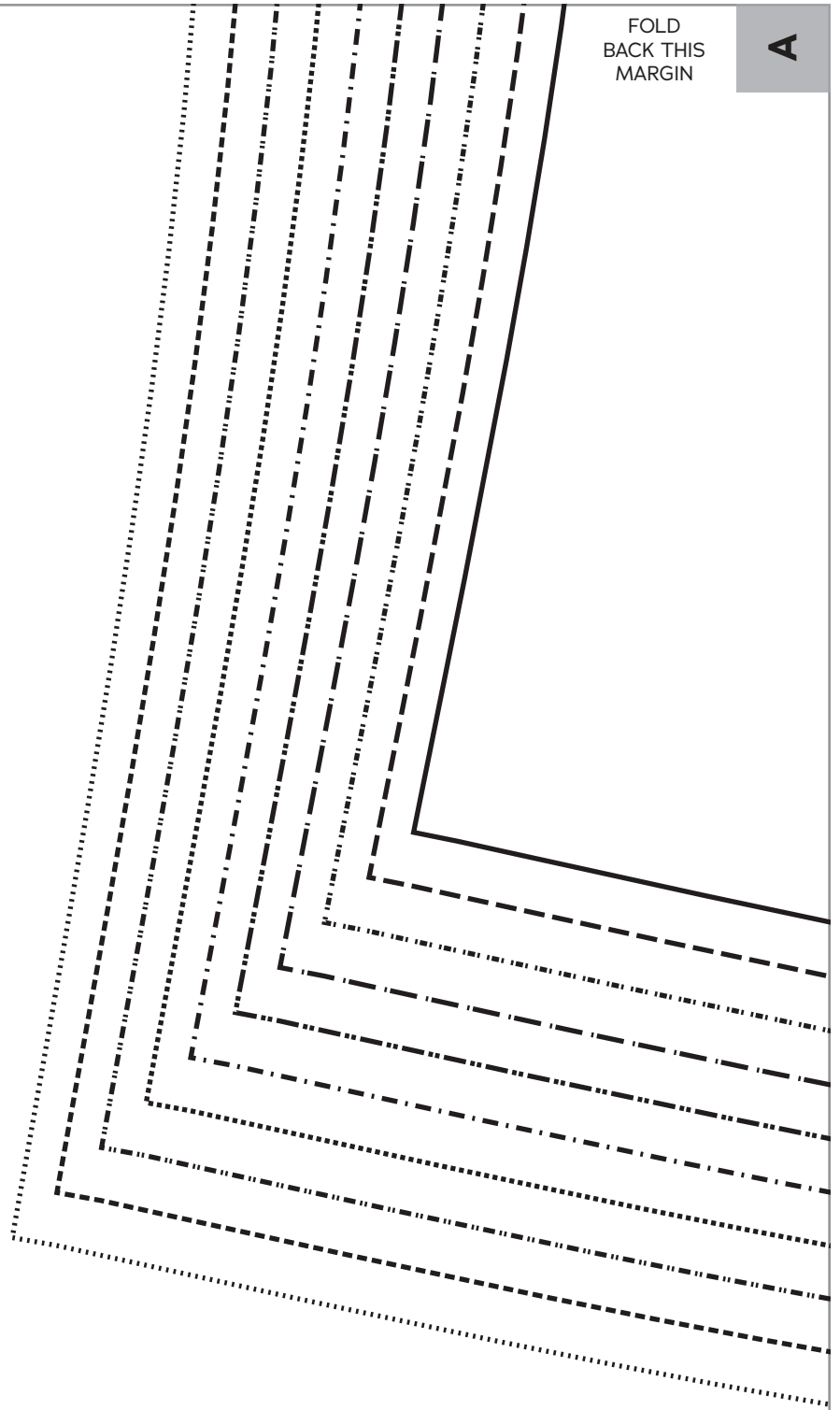
16

18

20

FOLD
BACK THIS
MARGIN

A

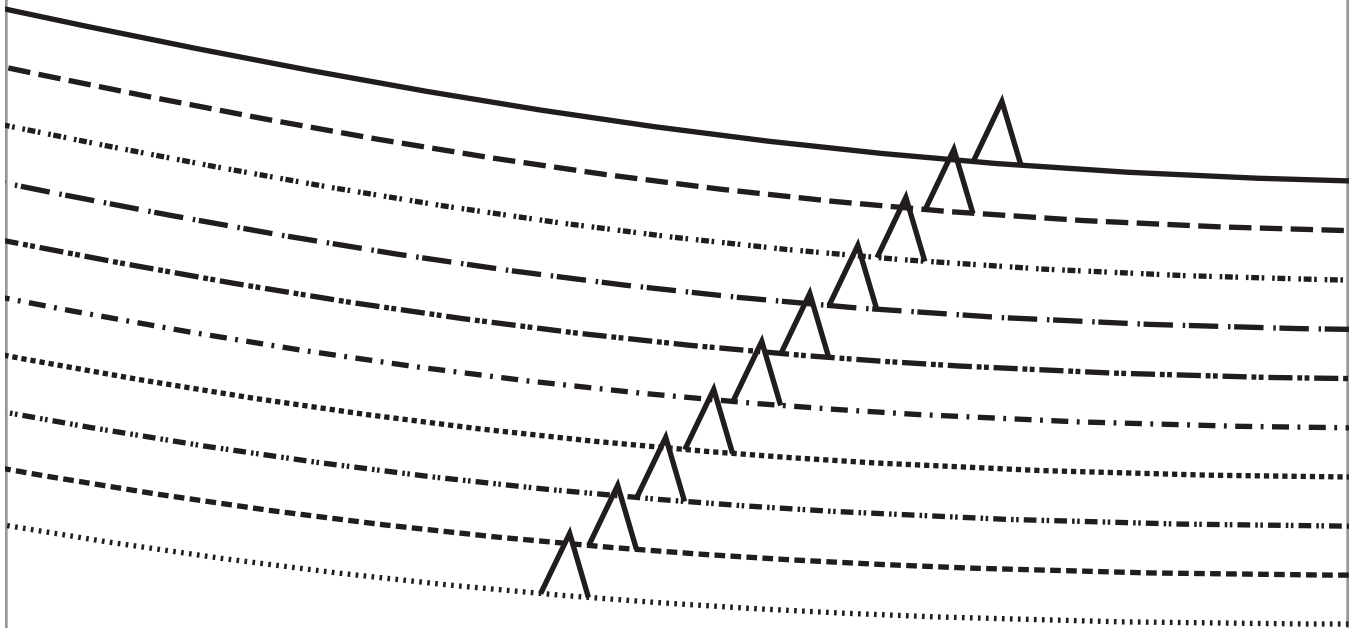


A

FOLD BACK THIS MARGIN

C

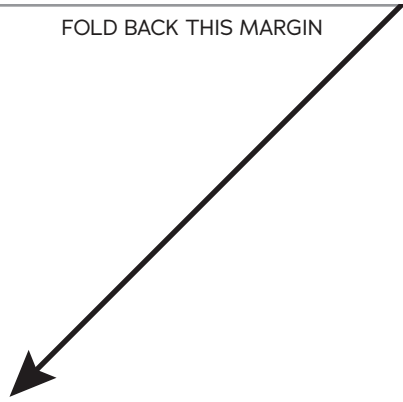
FOLD BACK THIS MARGIN



C

FOLD BACK THIS MARGIN

E



FOLD BACK THIS MARGIN

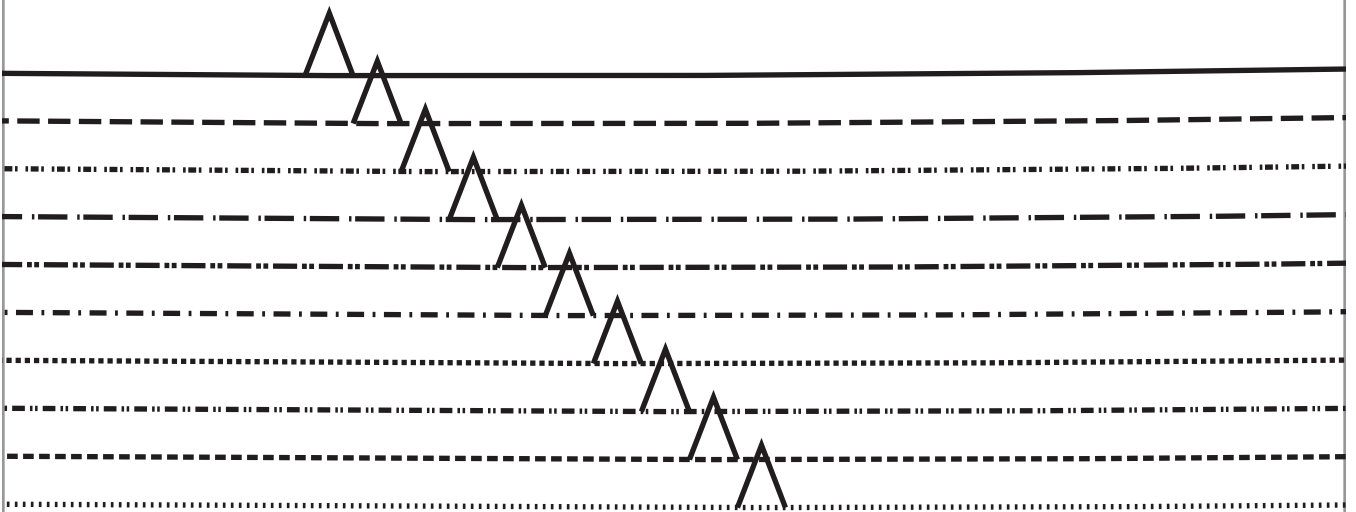
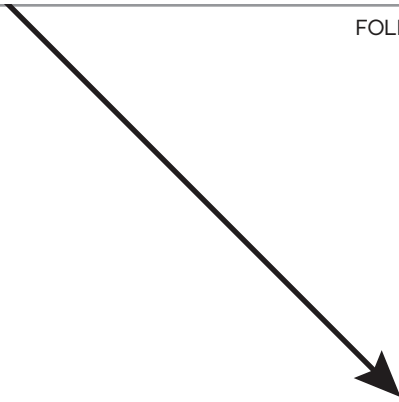


E

FOLD BACK THIS MARGIN

G

FOLD BACK THIS MARGIN



G

FOLD BACK THIS MARGIN

FOLD BACK THIS MARGIN

